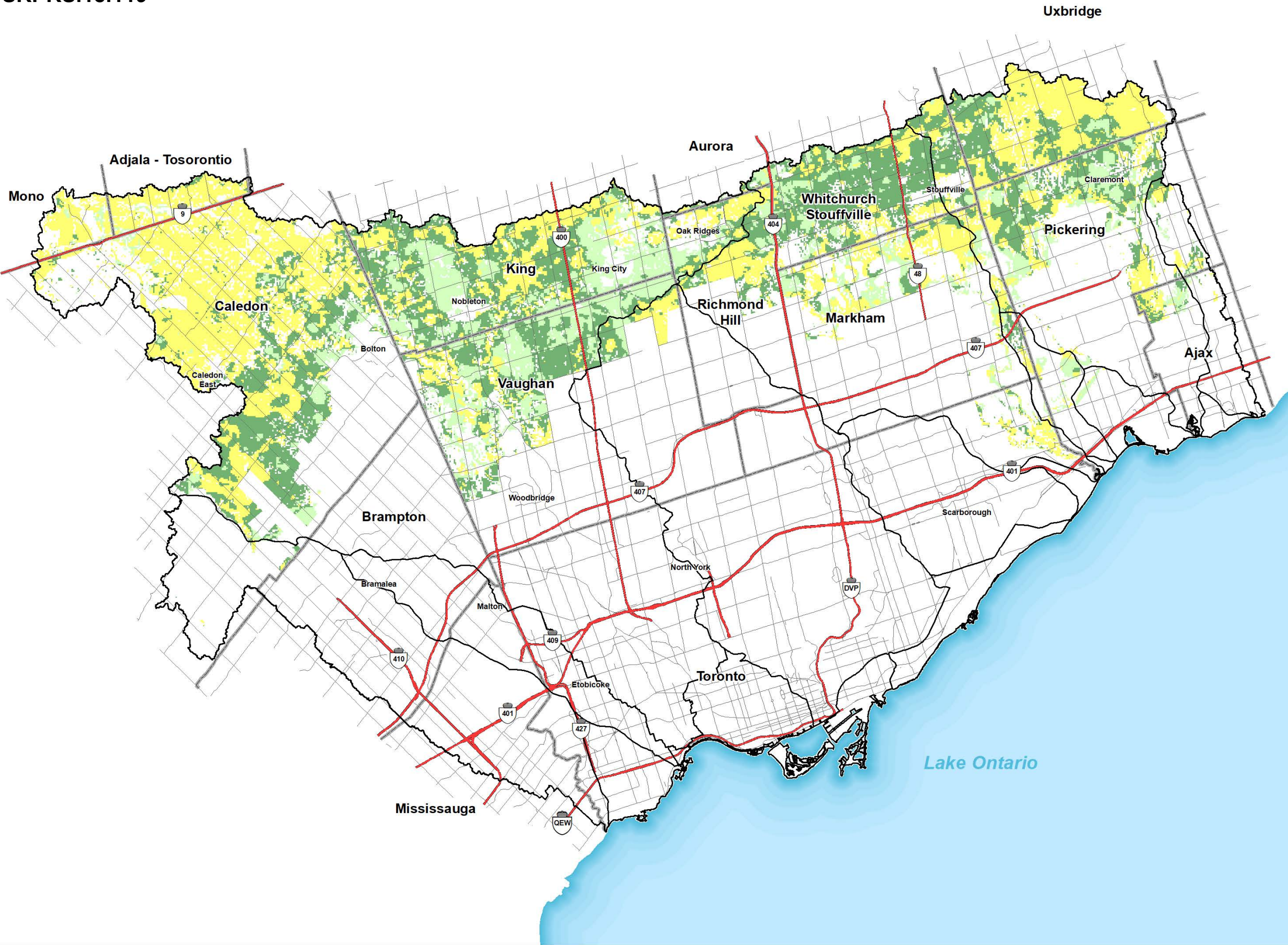


Significant Groundwater
Recharge Areas



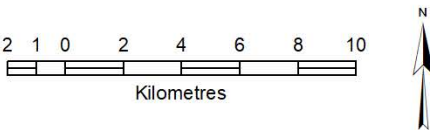
Legend

Vulnerability Score

- 2 (Low)
- 4 (Mod)
- 6 (High)

Transportation Network

- Provincial Highway
- Major Roads
- Municipal Boundary



(c) Copyright. Toronto & Region Source Protection Area, 2018.

Source: TRCA, 2014; DMTI Spatial, 2010; MNR, 2010.

This map has been prepared to meet provincial requirements under the Clean Water Act, 2006 and should be used for other purposes ONLY after consultation with the responsible conservation authority or source protection authority. The analysis used to produce this map relies on best available information as of the date of the map. Priority should be given to site specific information collected in accordance with accepted scientific protocols when being used for other purposes.



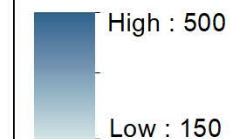
The Toronto & Region Source Protection Area

Significant Groundwater Recharge Areas using rule 44 (1) and Threshold by TRSPA Jurisdiction

Legend

Significant Recharge

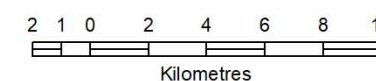
Greater than 150 mm/yr* and 215 mm/yr**



Transportation Network

- Provincial Highway
- Major Roads
- Municipal Boundary

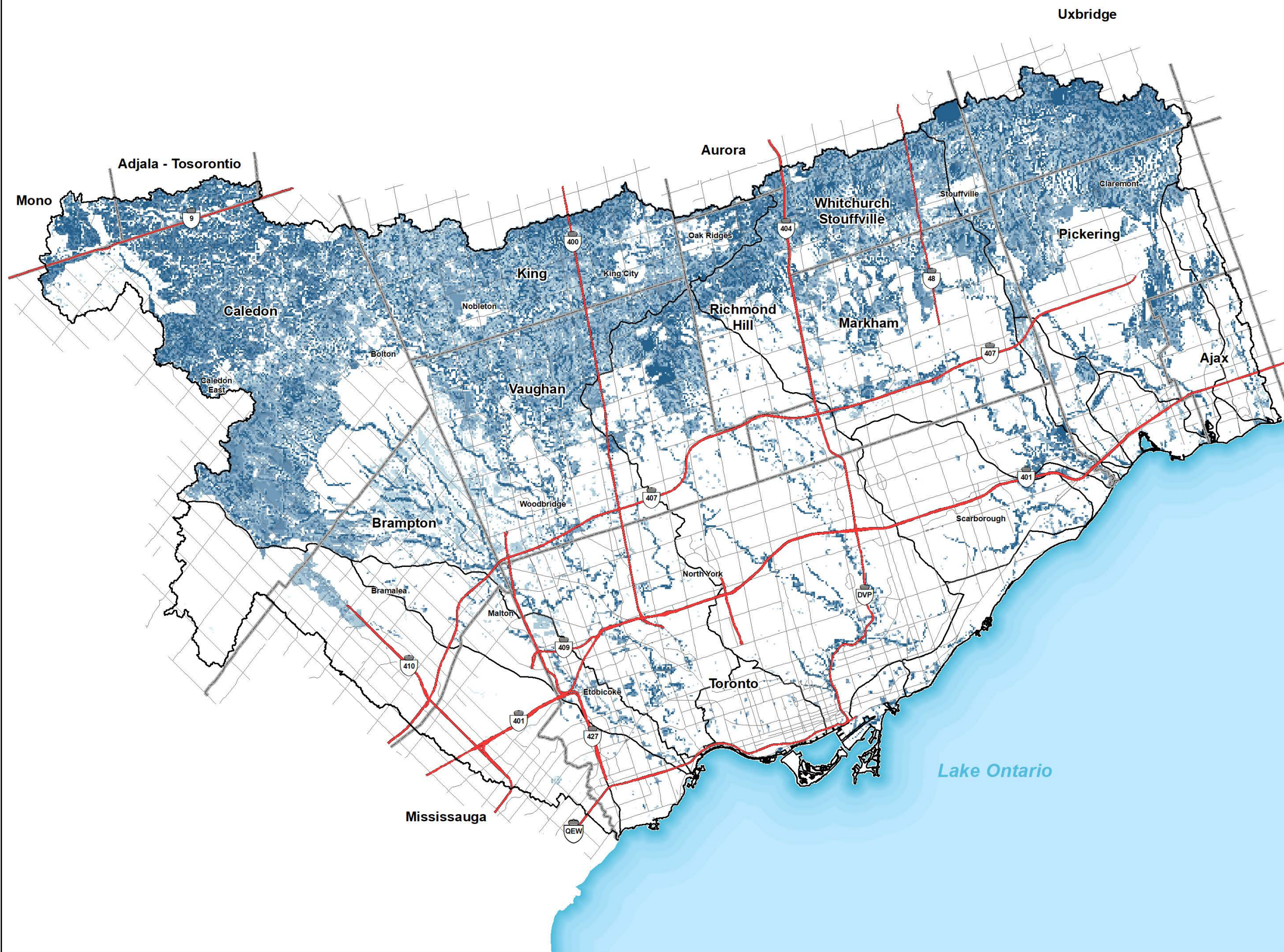
*SGRA threshold for Tier 1 model
**SGRA threshold for Tier 3 model



(c) Copyright. Toronto & Region Source Protection Area, 2018.

Source: TRCA, 2018; DMTI Spatial, 2010; MNR, 2010.

This map has been prepared to meet provincial requirements under the Clean Water Act, 2006 and should be used for other purposes ONLY after consultation with the responsible conservation authority or source protection authority. The analysis used to produce this map relies on best available information as of the date of the map. Priority should be given to site specific information collected in accordance with accepted scientific protocols when being used for other purposes.



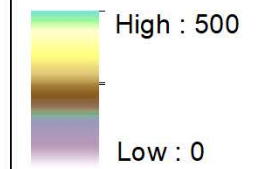
The Toronto & Region Source Protection Area

Simulated Average Annual Groundwater Recharge (mm/yr)

Legend

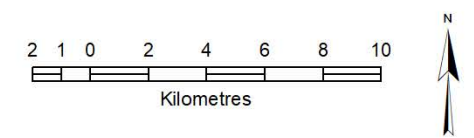
Average Annual Recharge

(mm/yr)



Transportation Network

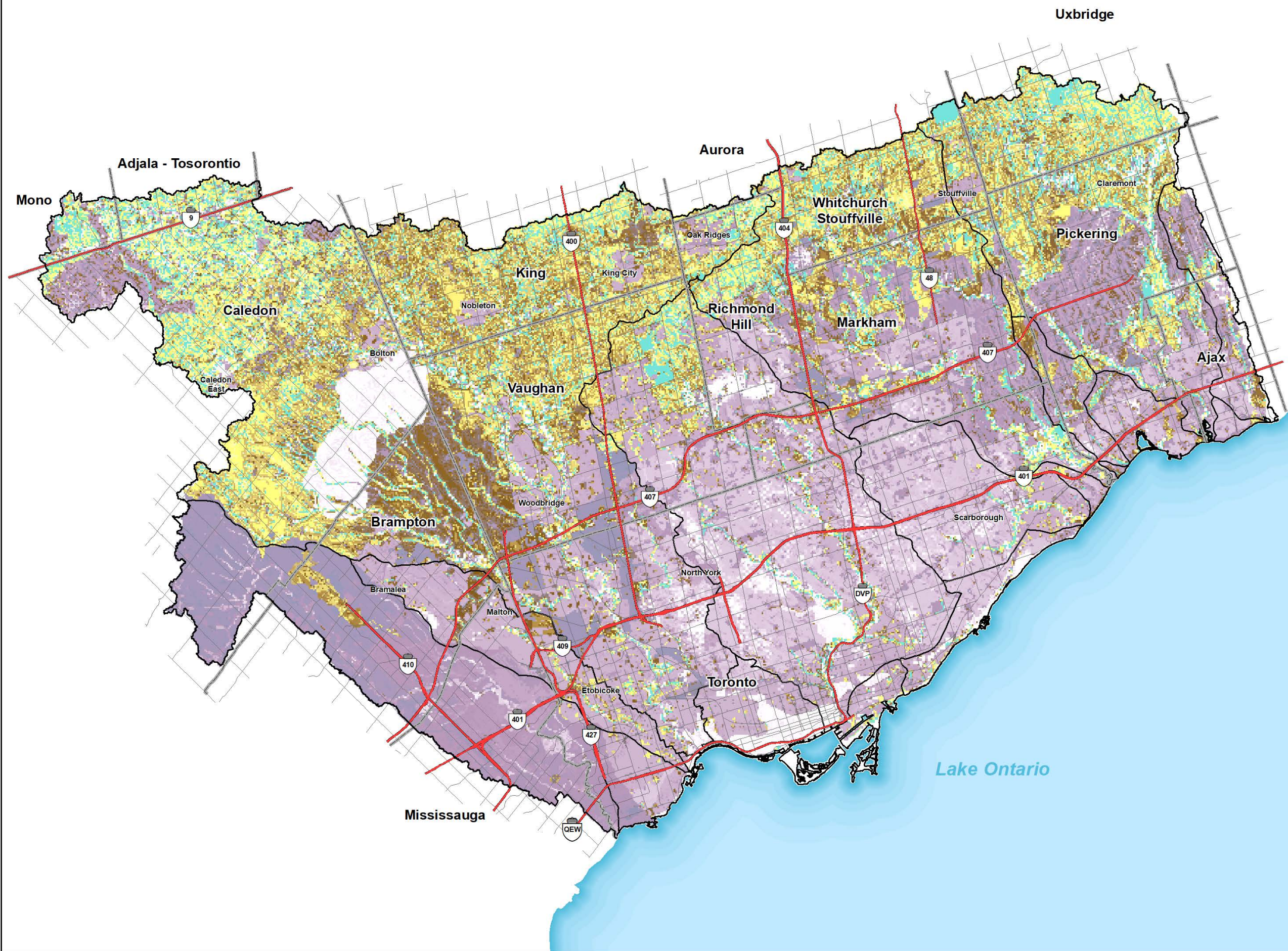
- Provincial Highway
- Major Roads
- Municipal Boundary



(c) Copyright. Toronto & Region Source Protection Area, 2018.

Source: TRCA, 2018; DMTI Spatial, 2010; MNR, 2010.


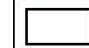
This map has been prepared to meet provincial requirements under the Clean Water Act, 2006 and should be used for other purposes ONLY after consultation with the responsible conservation authority or source protection authority. The analysis used to produce this map relies on best available information as of the date of the map. Priority should be given to site specific information collected in accordance with accepted scientific protocols when being used for other purposes.



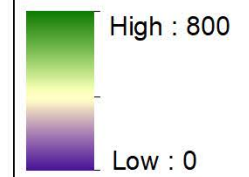
The Toronto & Region Source Protection Area

Tier 3 Model
Average Annual
Evapotranspiration (mm/yr)

Legend

-  WHPA Q1/Q2 (Moderate Risk Level)
-  Major Watershed

Actual Evapotranspiration (mm/year)



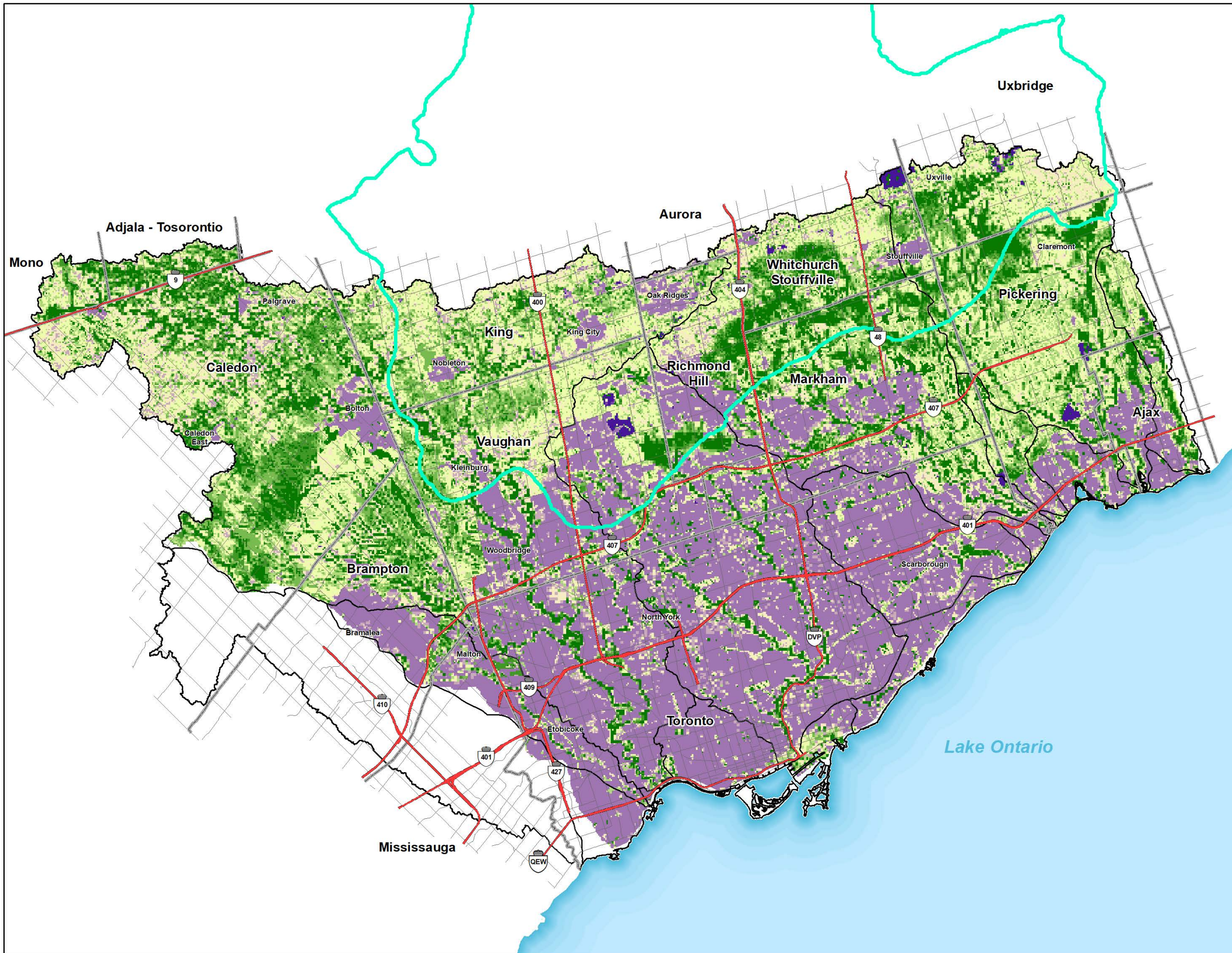
-  Provincial Highway
-  Major Roads
-  Municipal Boundary
-  Lake



(c) Copyright. Toronto & Region Source Protection Area, 2018.

Source: TRCA, 2018; DMTI Spatial, 2010; MNR, 2010.

This map has been prepared to meet provincial requirements under the Clean Water Act, 2006 and should be used for other purposes ONLY after consultation with the responsible conservation authority or source protection authority. The analysis used to produce this map relies on best available information as of the date of the map. Priority should be given to site specific information collected in accordance with accepted scientific protocols when being used for other purposes.

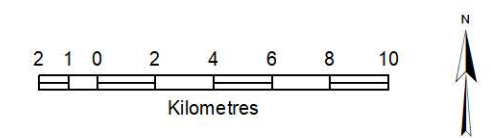
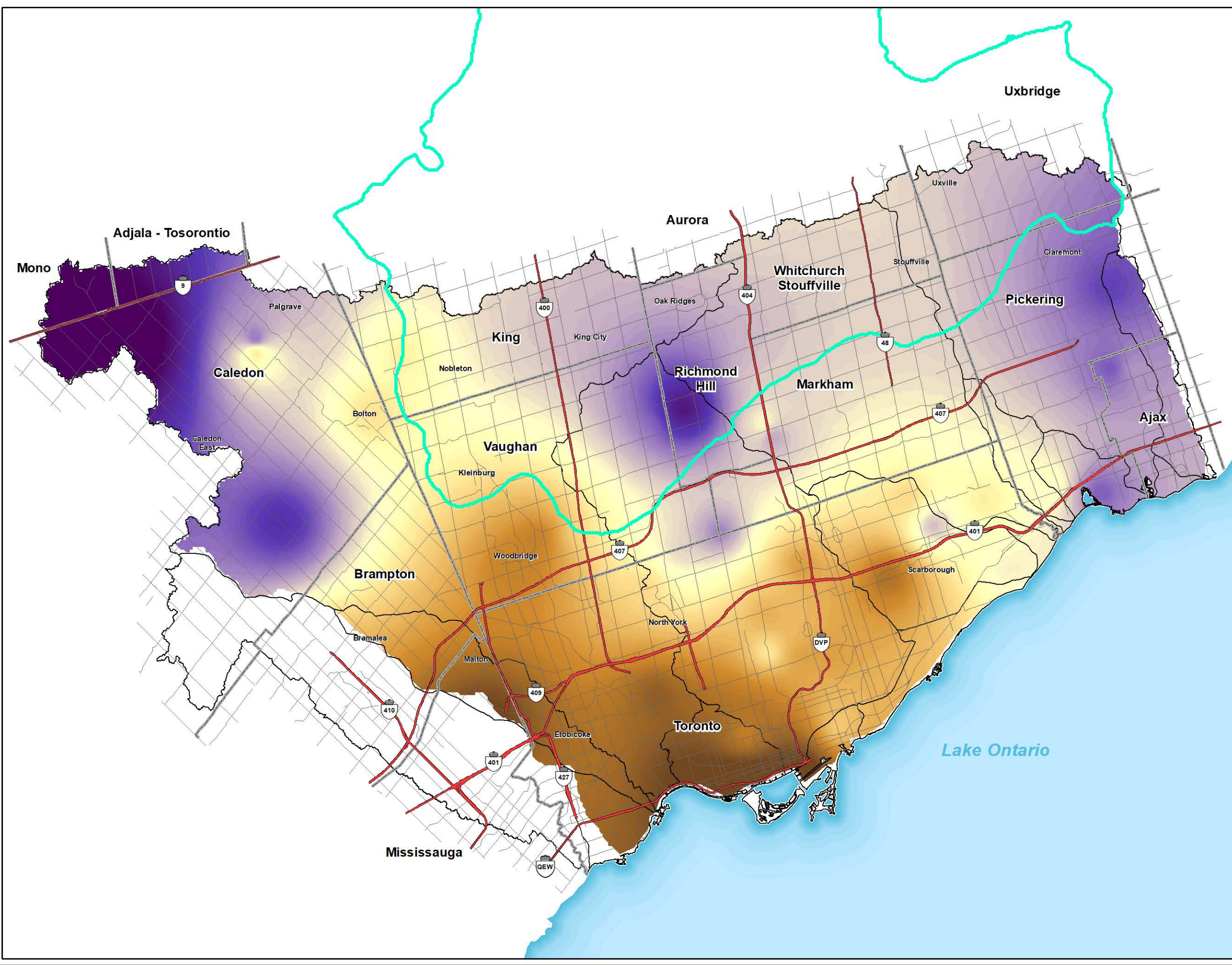


The Toronto & Region Source Protection Area

Tier 3 Model
Average Annual Precipitation (mm/yr)

Legend

- WHPA Q1/Q2 (Moderate Risk Level)
- Major Watershed
- Precipitation (mm/year)**
 - High : 950
 - Low : 750
- Provincial Highway
- Major Roads
- Municipal Boundary
- Lake



(c) Copyright. Toronto & Region Source Protection Area, 2018.

Source: TRCA, 2018; DMTI Spatial, 2010; MNR, 2010.


This map has been prepared to meet provincial requirements under the Clean Water Act, 2006 and should be used for other purposes ONLY after consultation with the responsible conservation authority or source protection authority. The analysis used to produce this map relies on best available information as of the date of the map. Priority should be given to site specific information collected in accordance with accepted scientific protocols when being used for other purposes.

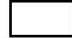


The Toronto & Region Source Protection Area


Tier 3 Model
Average Annual Recharge (mm/yr)

Legend

 WHPA Q1/Q2 (Moderate Risk Level)


 Major Watershed


Groundwater Recharge (mm/year)




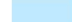
High : 500

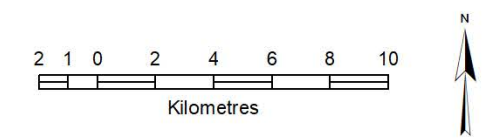
Low : 0

 Provincial Highway

 Major Roads

 Municipal Boundary

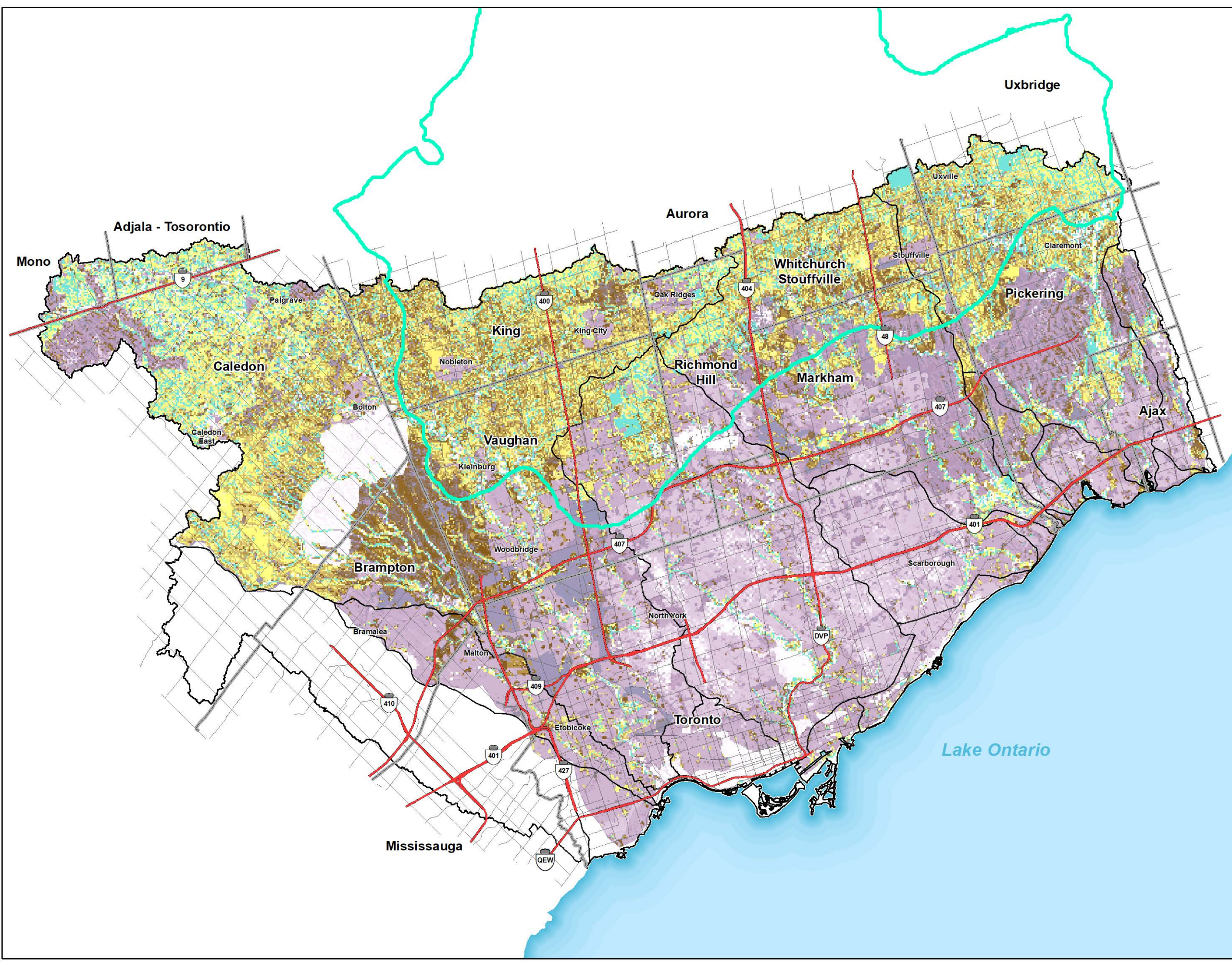
 Lake



(c) Copyright. Toronto & Region Source Protection Area, 2018.

Source: TRCA, 2018; DMTI Spatial, 2010; MNR, 2010.

This map has been prepared to meet provincial requirements under the Clean Water Act, 2006 and should be used for other purposes ONLY after consultation with the responsible conservation authority or source protection authority. The analysis used to produce this map relies on best available information as of the date of the map. Priority should be given to site specific information collected in accordance with accepted scientific protocols when being used for other purposes.



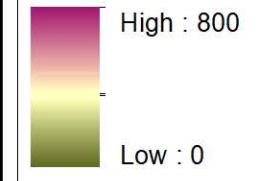
The Toronto & Region Source Protection Area

Tier 3 Model
Average Annual Runoff (mm/yr)

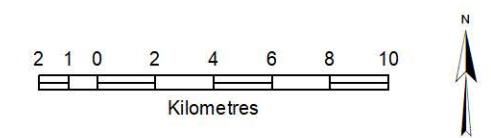
Legend

- WHPA Q1/Q2 (Moderate Risk Level)
- Major Watershed

Accumulated Cascade Runoff (mm/year)



- Provincial Highway
- Major Roads
- Municipal Boundary
- Lake



(c) Copyright. Toronto & Region Source Protection Area, 2018.

Source: TRCA, 2018; DMTI Spatial, 2010; MNR, 2010.

This map has been prepared to meet provincial requirements under the Clean Water Act, 2006 and should be used for other purposes ONLY after consultation with the responsible conservation authority or source protection authority. The analysis used to produce this map relies on best available information as of the date of the map. Priority should be given to site specific information collected in accordance with accepted scientific protocols when being used for other purposes.

