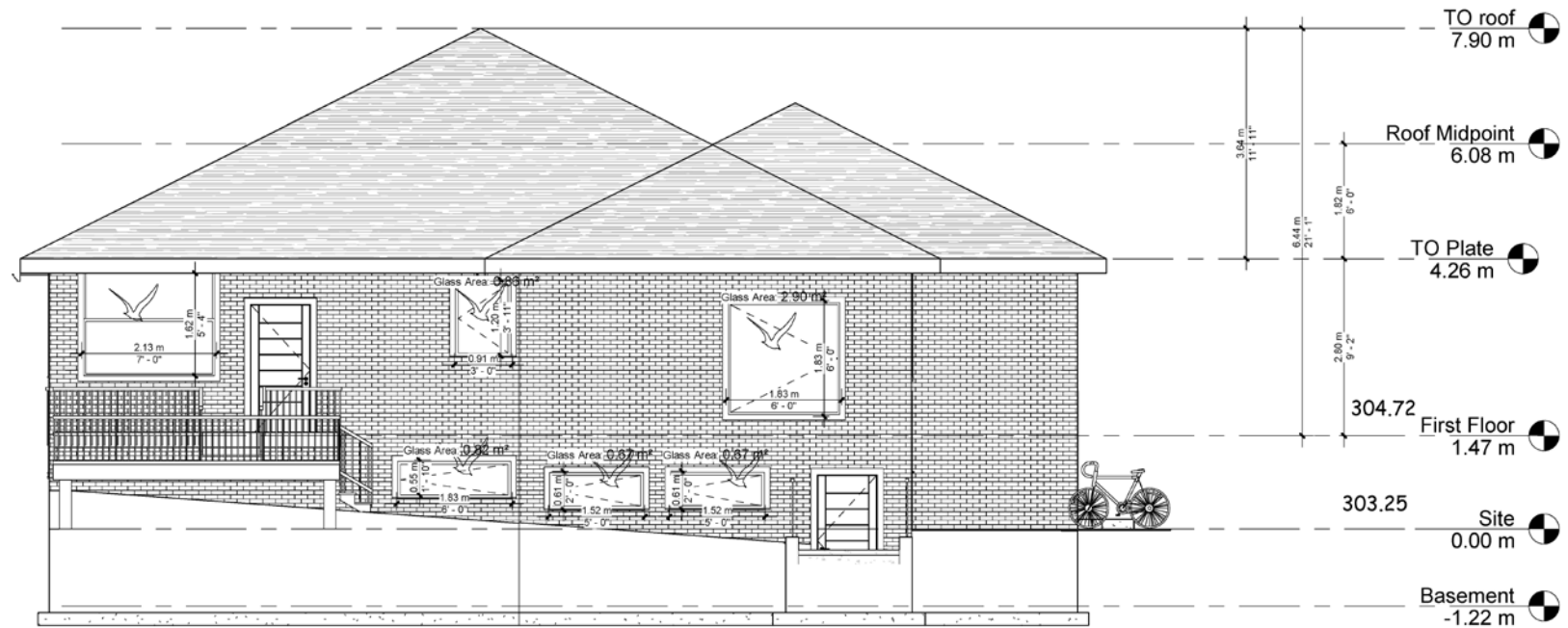


# MAP 6 - PROPOSED EAST(REAR) ELEVATION



Bird Friendly design strategies will be implemented on 85% of glazing with markers spaced at a maximum of 10 cm x 10 cm apart

① East  
1 : 75

BLOCK 01 FILE No. D06-15092

**CITY OF RICHMOND HILL  
PLANNING AND REGULATORY  
SERVICES DEPARTMENT**

KF/HL SRPRS.19.088