

MAP D

SRPRS.19.136

Registered R-PLAN

I REQUIRE THIS PLAN TO BE DEPOSITED
UNDER THE LAND TITLES ACT.

PLAN 65R-30112

DATE JUNE 21, 2007.

RECEIVED AND DEPOSITED
DATE JUNE 22, 2007.

W.M. Fenton
W.M. FENTON
ONTARIO LAND SURVEYOR

"LINDA MOOTE"
ASST. DEP. LAND REGISTRAR FOR THE LAND
TITLES DIVISION OF YORK REGION No. 65

SCHEDULE

PART	PART OF LOT	CONCESSION	PART OF PIN	AREA (m ²)
1				975.0
2				939.0
3				13.1
4	SOUTH HALF OF 56	I. EAST OF YONGE STREET	03193-0034	215.5
5				11.4

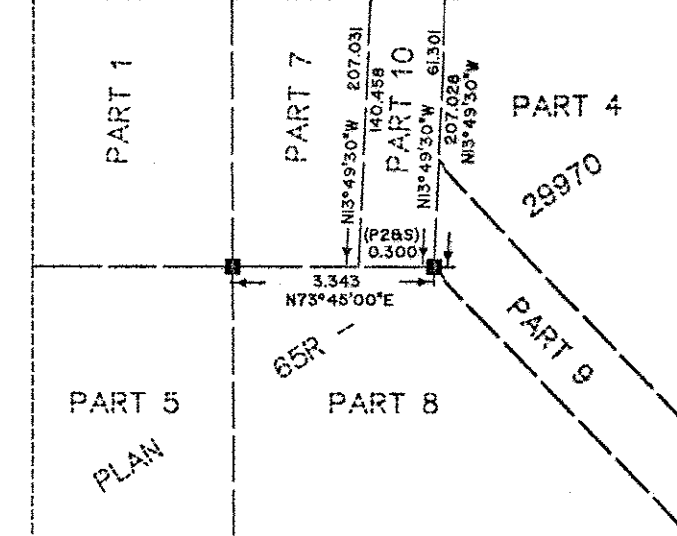
That external aboveground and belowground
municipal services be assumed.

That lands be established as public highway

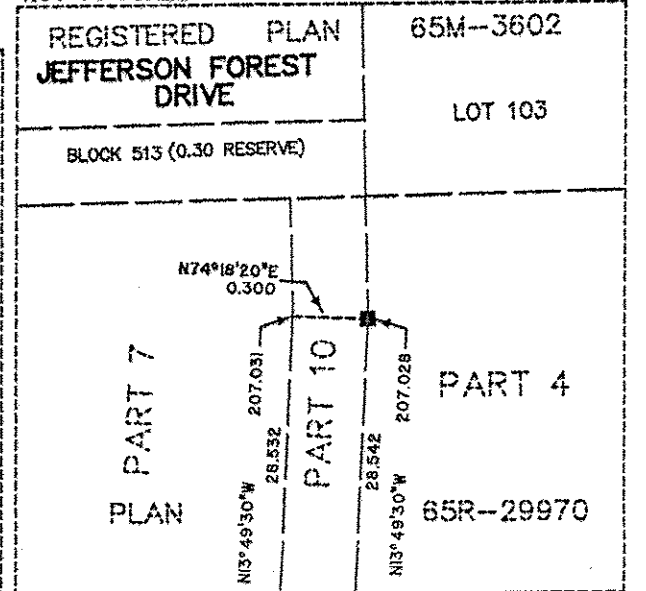
PART OF THE SOUTH HALF OF
LOT 56, CONCESSION 1,
EAST OF YONGE STREET
(GEOGRAPHIC TOWNSHIP OF MARKHAM, COUNTY OF YORK)
TOWN OF RICHMOND HILL
REGIONAL MUNICIPALITY OF YORK
SCALE 1 : 500

SCHAEFFER & DZALDOV LIMITED

DETAIL 'A'



DETAIL 'B'



NOTES

SYMBOL	DENOTES	PLANTED MONUMENT
■	FOUND MONUMENT	
SIB	STANDARD IRON BAR	
SSIB	SHORT STANDARD IRON BAR	
P	PLAN 64R-5460	
P2	PLAN 65R-14303	
P2	PLAN 65R-29970	
922	SCHAEFFER & DZALDOV LIMITED, O.L.S.	
M	MEASURED	
S	SET	

ALL FOUND MONUMENTS ARE NUMBERED 922 UNLESS NOTED OTHERWISE.
ALL FOUND MONUMENTS ARE SSIB'S UNLESS NOTED OTHERWISE.
ALL PLANTED MONUMENTS ARE SSIB'S UNLESS NOTED OTHERWISE.
BEARINGS ARE ASTRONOMIC AND ARE REFERRED TO THE WESTERLY LIMIT
OF PART 3 AS SHOWN ON PLAN 64R-5460, HAVING A BEARING OF N16°37'25"W.

SURVEYOR'S CERTIFICATE

I CERTIFY THAT:

- THIS SURVEY AND PLAN ARE CORRECT AND IN ACCORDANCE WITH THE SURVEYS ACT, THE SURVEYORS ACT, THE LAND TITLES ACT AND THE REGULATIONS MADE UNDER THEM.
- THE SURVEY WAS COMPLETED ON THE 13th DAY OF MARCH, 2007.

DATE JUNE 15, 2007.

W.M. Fenton
W.M. FENTON
Ontario Land Surveyor



SCHAEFFER & DZALDOV LIMITED
ONTARIO LAND SURVEYORS

64 JARDIN DRIVE CONCORD, ONTARIO L4K 3P3 TEL. (416) 987-0101
DRAWN ACAD/LW CHECKED WMF SCALE 1:500 JOB NO. 04-030-13A