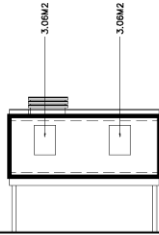
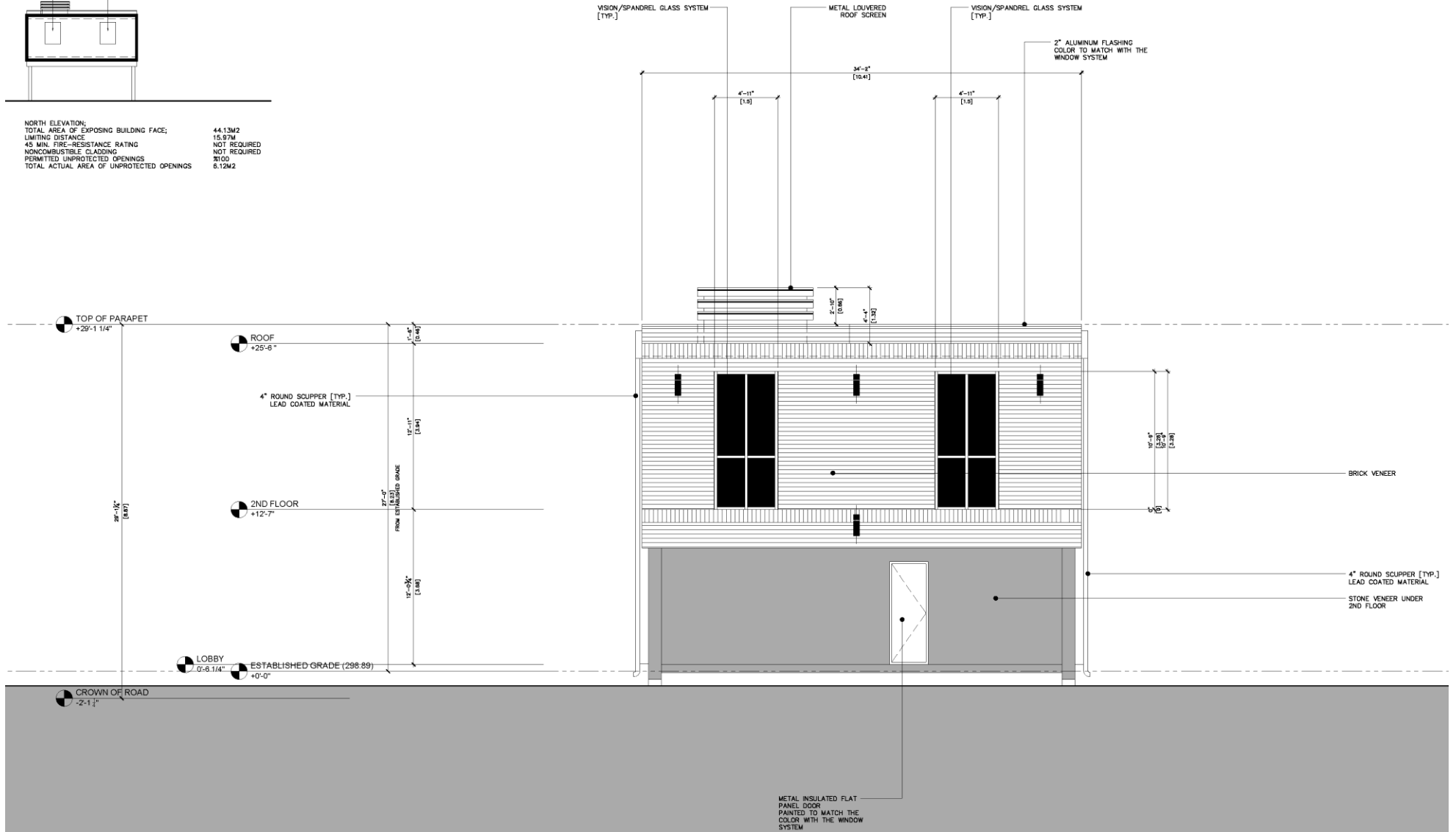


MAP 7 - PROPOSED NORTH ELEVATION



NORTH ELEVATION:
TOTAL AREA OF EXPOSING BUILDING FACE;
LIMITING DISTANCE
45 MIN. FIRE-RESISTANCE RATING
NONCOMBUSTIBLE CLADDING
PERMITTED UNPROTECTED OPENINGS
TOTAL ACTUAL AREA OF UNPROTECTED OPENINGS

44.13M2
15.97M
NOT REQUIRED
NOT REQUIRED
8100
6.12M2



Block 01

File No.D02-16019

**CITY OF RICHMOND HILL
PLANNING AND REGULATORY
SERVICES DEPARTMENT**

KF/SS SRPRS.19.141