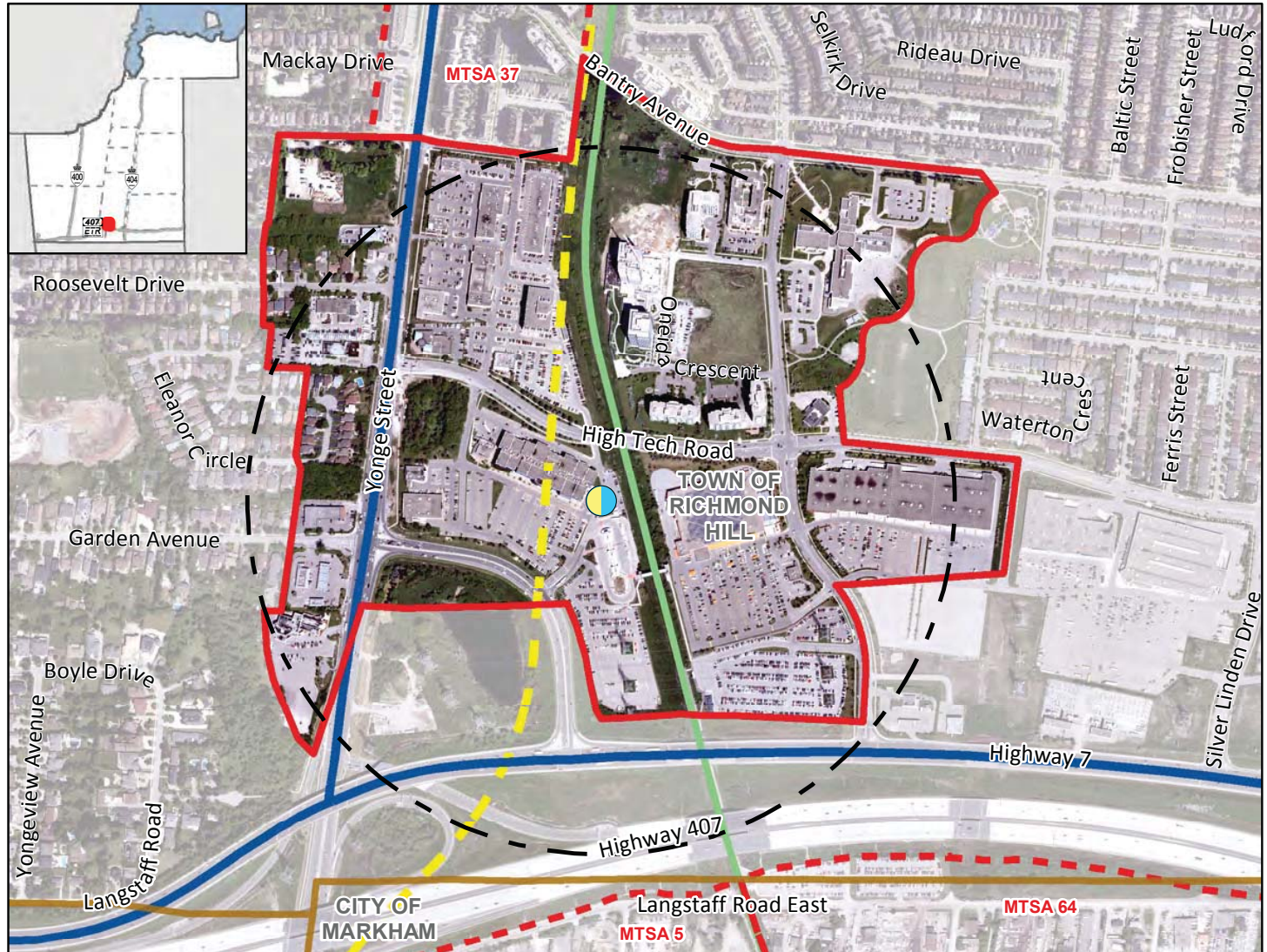


Richmond Hill Centre Subway Station

MTSA 4

On Yonge Subway Extension / Highway 7 BRT / Yonge South BRT Corridor
Near High Tech Road and Yonge Street, Richmond Hill



Major Transit Station

- Required Subway/BRT
- 500m Radius
- Draft MTSAs Boundary
- Adjacent Draft MTSAs Boundary

Legend

- Priority Transit Corridors - BRT
- Other Transit Lines - Subway
- Other Transit Lines - GO Rail
- Local Municipal Boundary

Richmond Hill Centre Subway Station

Gross Area:
68.42 ha

Density (People & Jobs per Hectare) ¹

Current	60
Target	500

Population/Job Split ²

Current	50%	50%
Target	50%	50%

York Region

The Regional Municipality of York
Corporate Services,
Planning and Economic Development
March 2019

Data © Queen's Printer for
Ontario 2003-2019

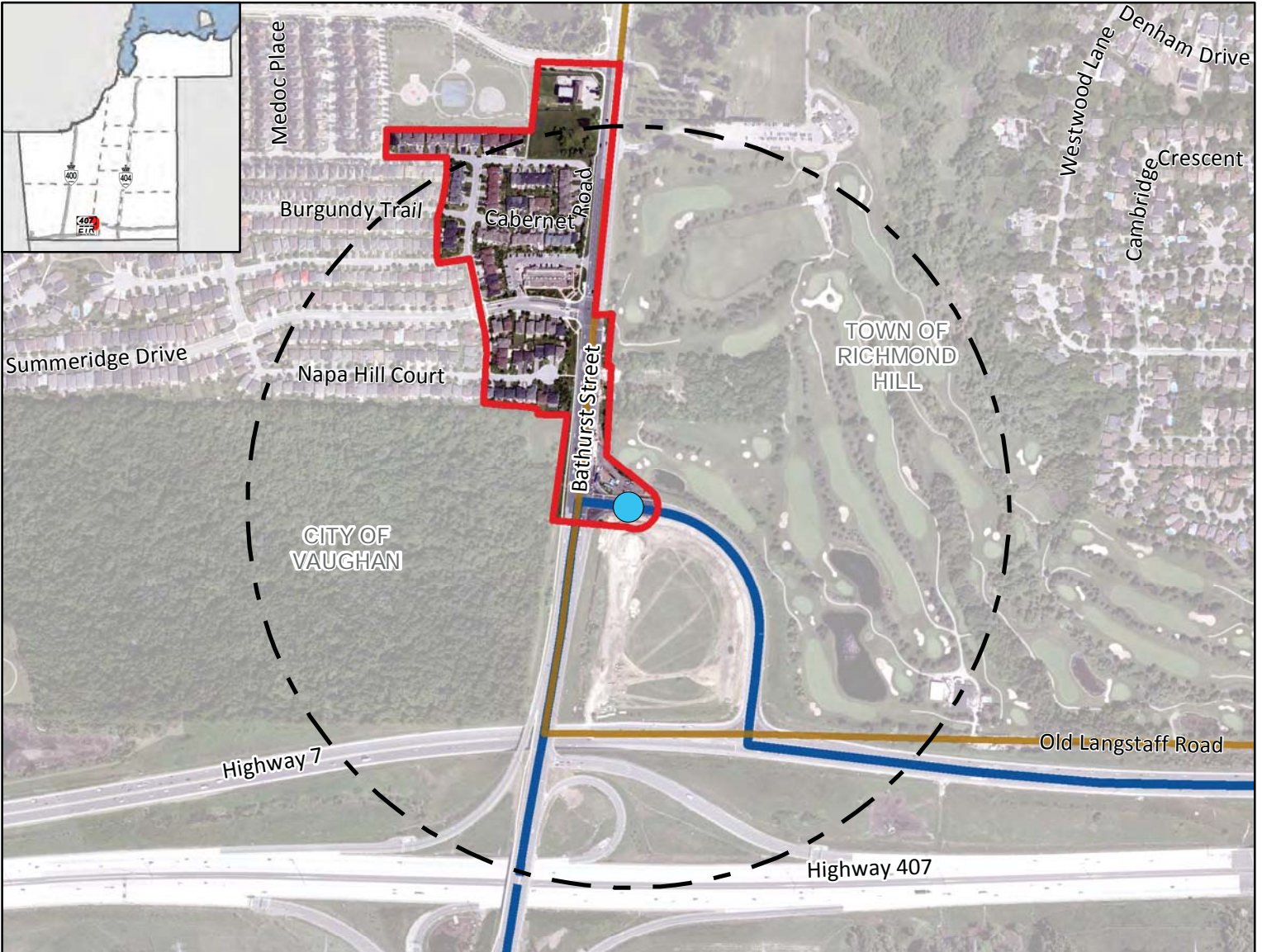
See York.ca for disclaimer information.

¹ Values are rounded to the nearest 5 People & Jobs per Hectare

² Values are rounded to the nearest 5%

Bathurst-Highway 7 BRT Station

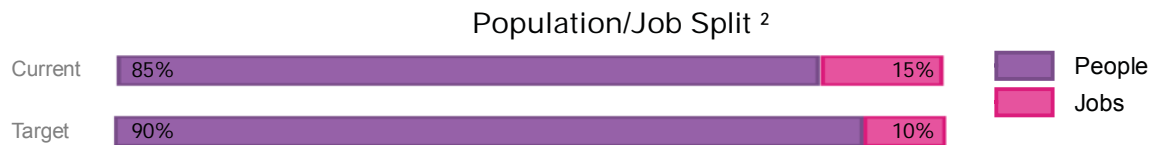
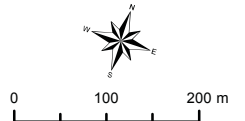
On Highway 7 BRT Corridor
 Along Bathurst Street at Highway 7, Vaughan



Legend

- Major Transit Station
 - Required BRT
- 500m Radius
- Draft MTSA Boundary
- Priority Transit Corridors
 - BRT
- Base Map Information
 - Local Municipal Boundary

Bathurst-Highway 7 BRT Station
 Gross Area:
 9.45 ha



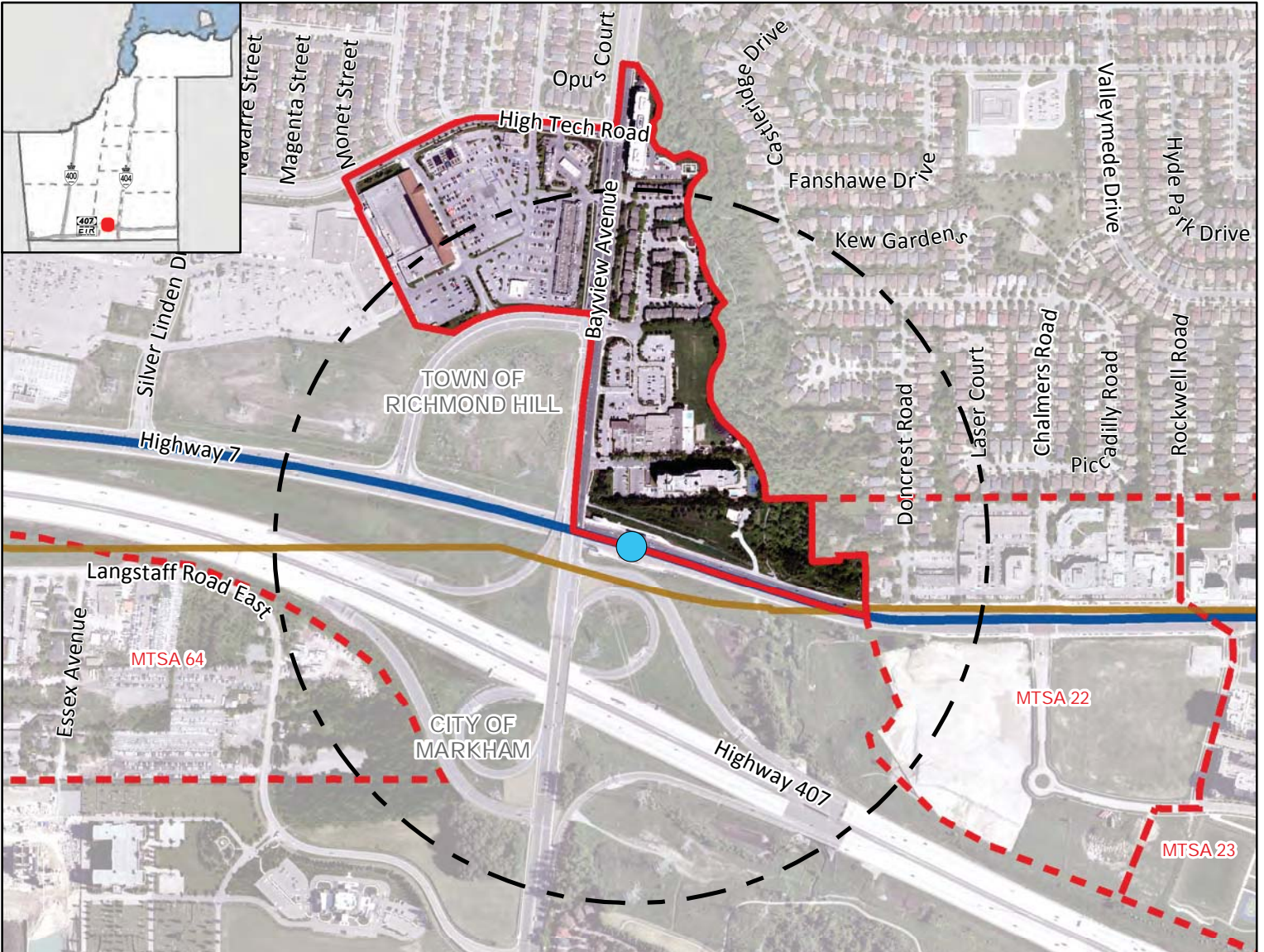
York Region
 The Regional Municipality of York
 Corporate Services,
 Planning and Economic Development
 March 2019
 Data © Queen's Printer for
 Ontario 2003-2019
 See York.ca for disclaimer information.

¹ Values are rounded to the nearest 5 People & Jobs per Hectare

² Values are rounded to the nearest 5%

Bayview BRT Station

On Highway 7 BRT Corridor
 Along Highway 7 at Bayview Avenue, Richmond Hill



Legend

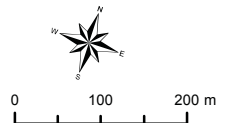
- Major Transit Station**
 - Required BRT
 - 500m Radius
 - Draft MTSA Boundary
 - Adjacent Draft MTSA Boundary
- Priority Transit Corridors**
 - BRT
- Base Map Information**
 - Local Municipal Boundary

Bayview BRT Station
Gross Area:
 21.13 ha

Density (People & Jobs per Hectare) ¹



Population/Job Split ²



The Regional Municipality of York
 Corporate Services,
 Planning and Economic Development
 March 2019

Data © Queen's Printer for
 Ontario 2003-2019
 See York.ca for disclaimer information.

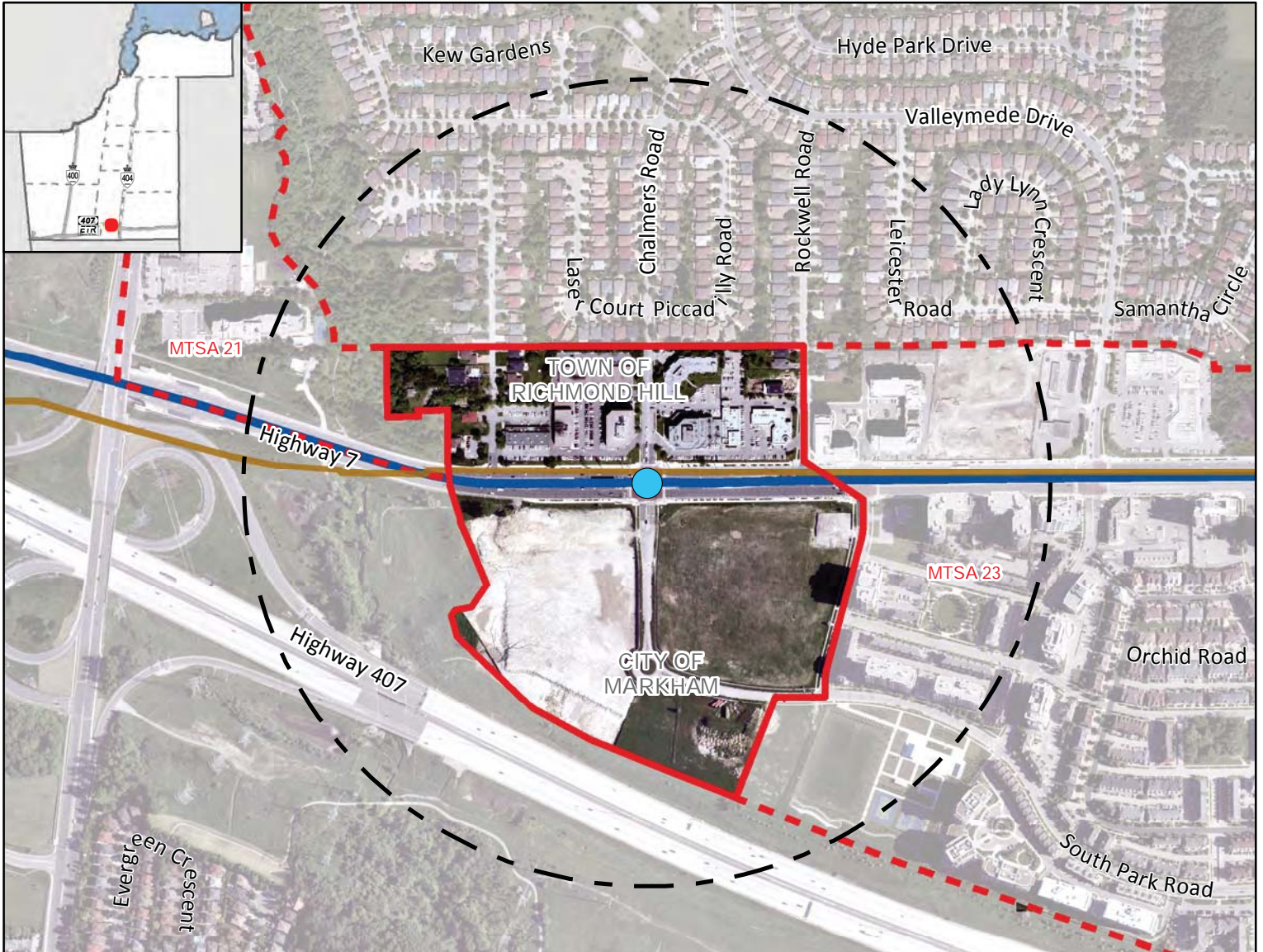
¹ Values are rounded to the nearest 5 People & Jobs per Hectare

² Values are rounded to the nearest 5%

Chalmers BRT Station

On Highway 7 BRT Corridor

Along Highway 7 at Chalmers Road/South Park Road, Markham/Richmond Hill



Major Transit Station

- Required BRT
- 500m Radius
- Draft MTSA Boundary
- Adjacent Draft MTSA Boundary

Legend

- Priority Transit Corridors
- BRT
- Base Map Information
- Local Municipal Boundary

Chalmers BRT Station
Gross Area: 22.60 ha

Density (People & Jobs per Hectare) ¹

Category	Current	Target
MARKHAM	30	200
RICHMOND HILL	185	200

Population/Job Split ²

Category	People	Jobs
Current	30%	70%
Target	75%	25%

York Region

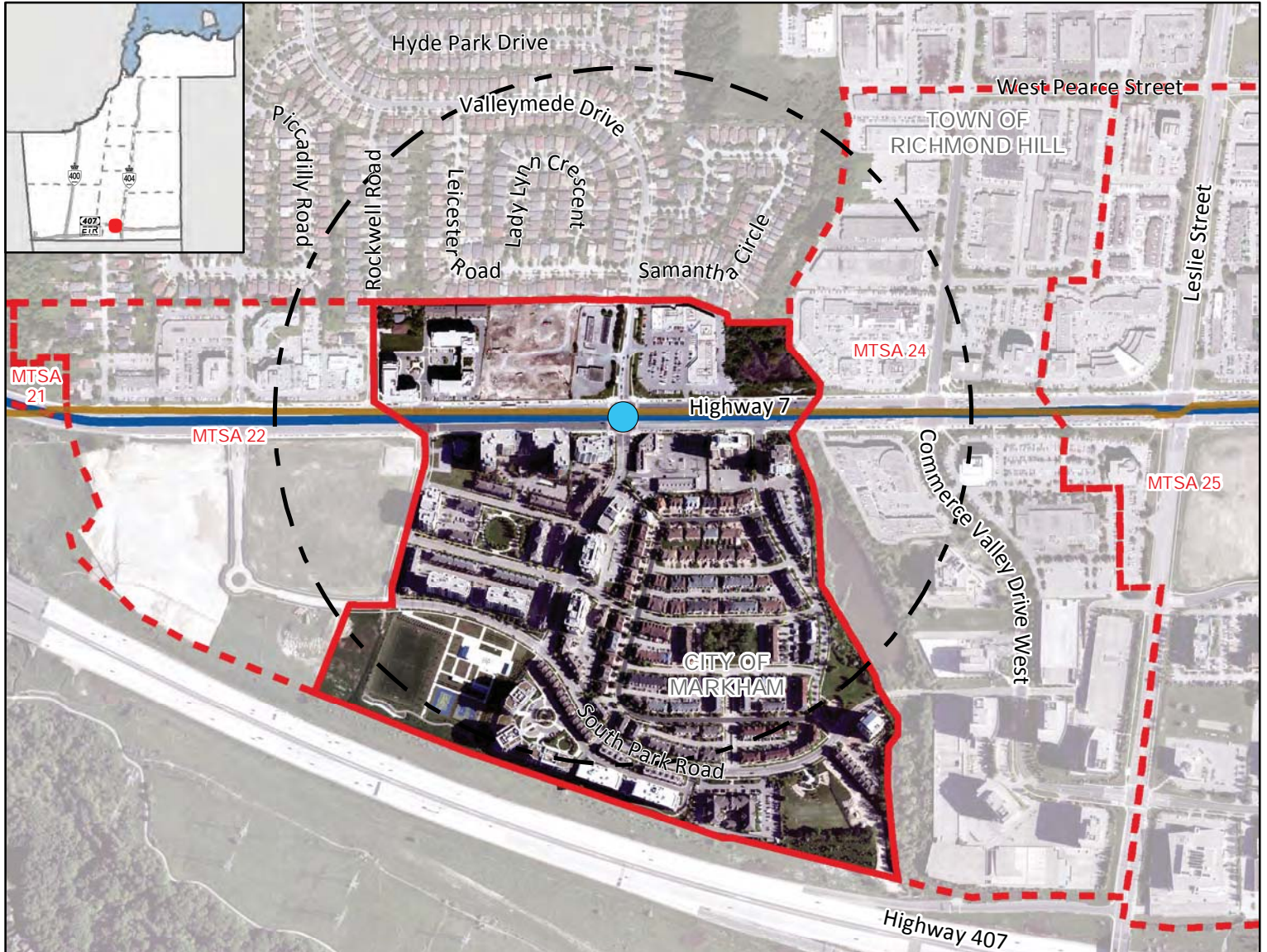
The Regional Municipality of York
Corporate Services,
Planning and Economic Development
March 2019
Data © Queen's Printer for
Ontario 2003-2019
See York.ca for disclaimer information.

¹ Values are rounded to the nearest 5 People & Jobs per Hectare

² Values are rounded to the nearest 5%

Valleymede BRT Station

On Highway 7 BRT Corridor
 Along Highway 7 at Valleymede Drive/Times Avenue, Markham/Richmond Hill



Legend

Major Transit Station

● Required BRT

□ 500m Radius

▭ Draft MTSA Boundary

▭ Adjacent Draft MTSA Boundary

Priority Transit Corridors

▬ BRT

Base Map Information

▬ Local Municipal Boundary

Valleymede BRT Station

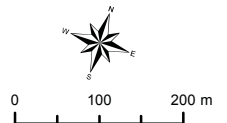
Gross Area:

47.07 ha

Density (People & Jobs per Hectare) ¹



Population/Job Split ²



The Regional Municipality of York
 Corporate Services,
 Planning and Economic Development
 March 2019

Data © Queen's Printer for
 Ontario 2003-2019

See York.ca for disclaimer information.

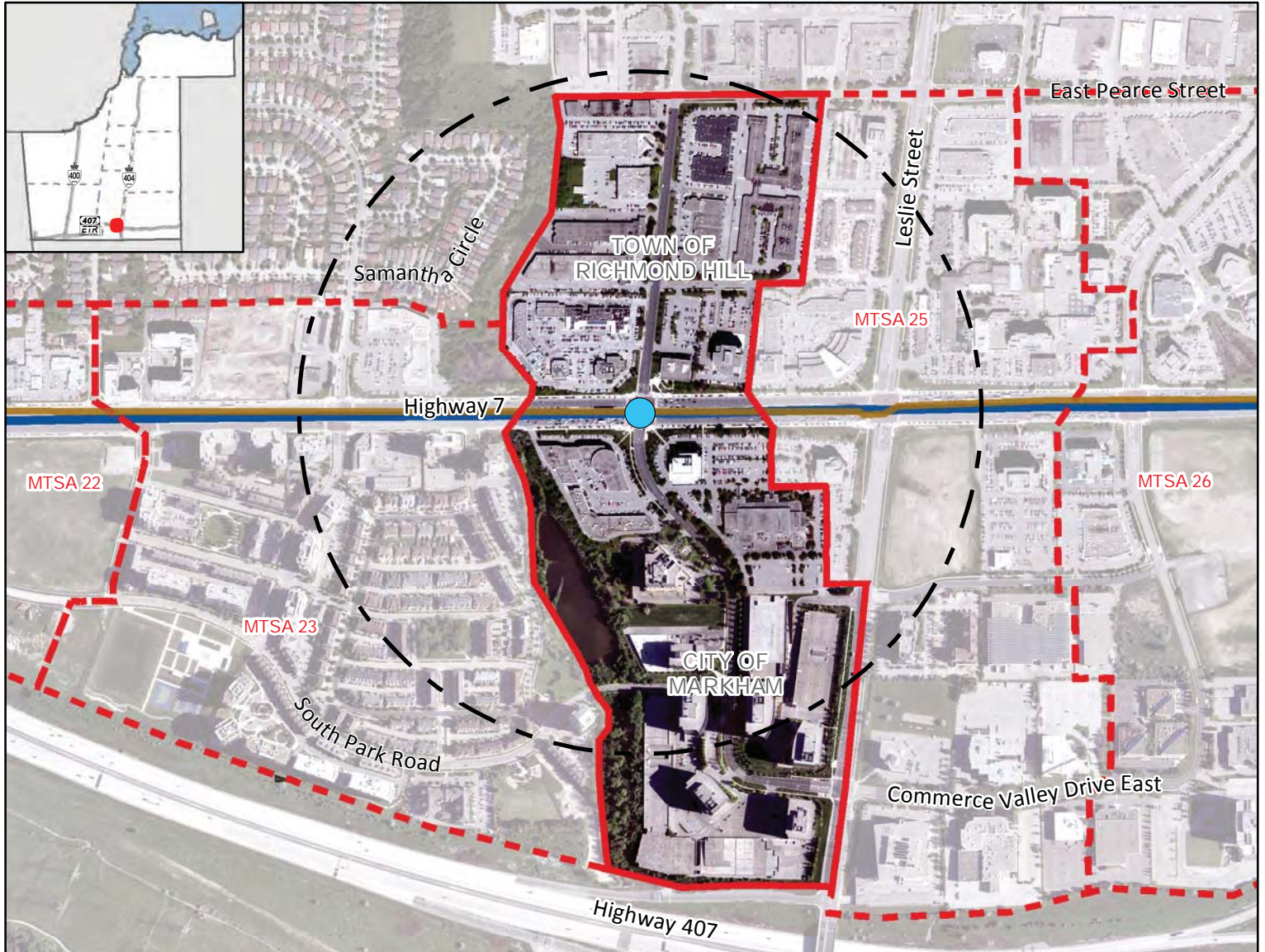
¹ Values are rounded to the nearest 5 People & Jobs per Hectare

² Values are rounded to the nearest 5%

West Beaver Creek BRT Station

On Highway 7 BRT Corridor

Along Highway 7 at West Beaver Creek Rd/Commerce Valley Dr W, Markham/Richmond Hill



Legend

Major Transit Station

● Required BRT

○ 500m Radius

▭ Draft MTSA Boundary

▭ Adjacent Draft MTSA Boundary

Priority Transit Corridors

▬ BRT

Base Map Information

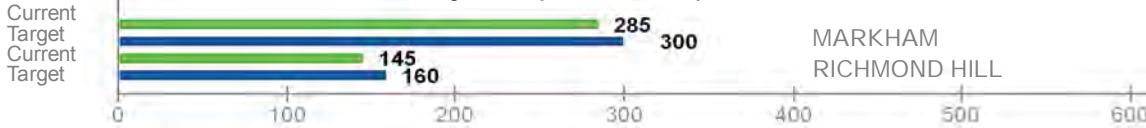
▬ Local Municipal Boundary

West Beaver Creek BRT Station

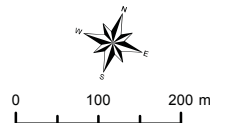
Gross Area:

44.36 ha

Density (People & Jobs per Hectare) ¹



Population/Job Split ²



The Regional Municipality of York
Corporate Services,
Planning and Economic Development
March 2019

Data © Queen's Printer for
Ontario 2003-2019

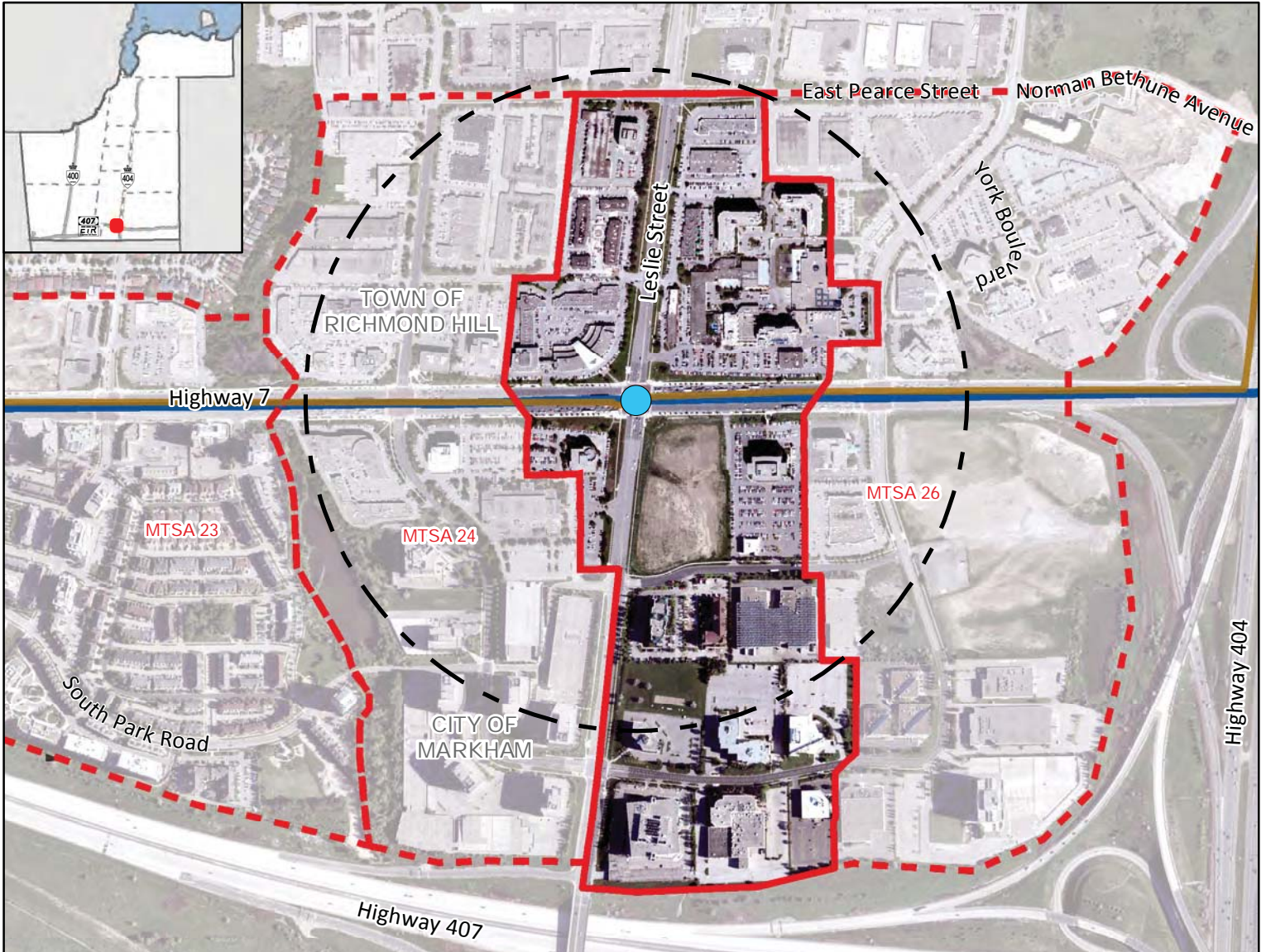
See York.ca for disclaimer information.

¹ Values are rounded to the nearest 5 People & Jobs per Hectare

² Values are rounded to the nearest 5%

Leslie-Highway 7 BRT Station

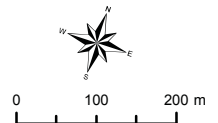
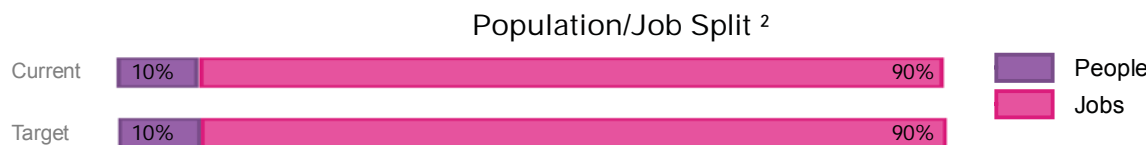
On Highway 7 BRT Corridor
 Along Highway 7 at Leslie Street, Markham/Richmond Hill



Legend

- Major Transit Station
 - Required BRT
- 500m Radius
- Draft MTSA Boundary
- Adjacent Draft MTSA Boundary
- Priority Transit Corridors
 - BRT
- Base Map Information
 - Local Municipal Boundary

Leslie-Highway 7
 BRT Station
 Gross Area:
 46.03 ha



The Regional Municipality of York
 Corporate Services,
 Planning and Economic Development
 March 2019

Data © Queen's Printer for
 Ontario 2003-2019
 See York.ca for disclaimer information.

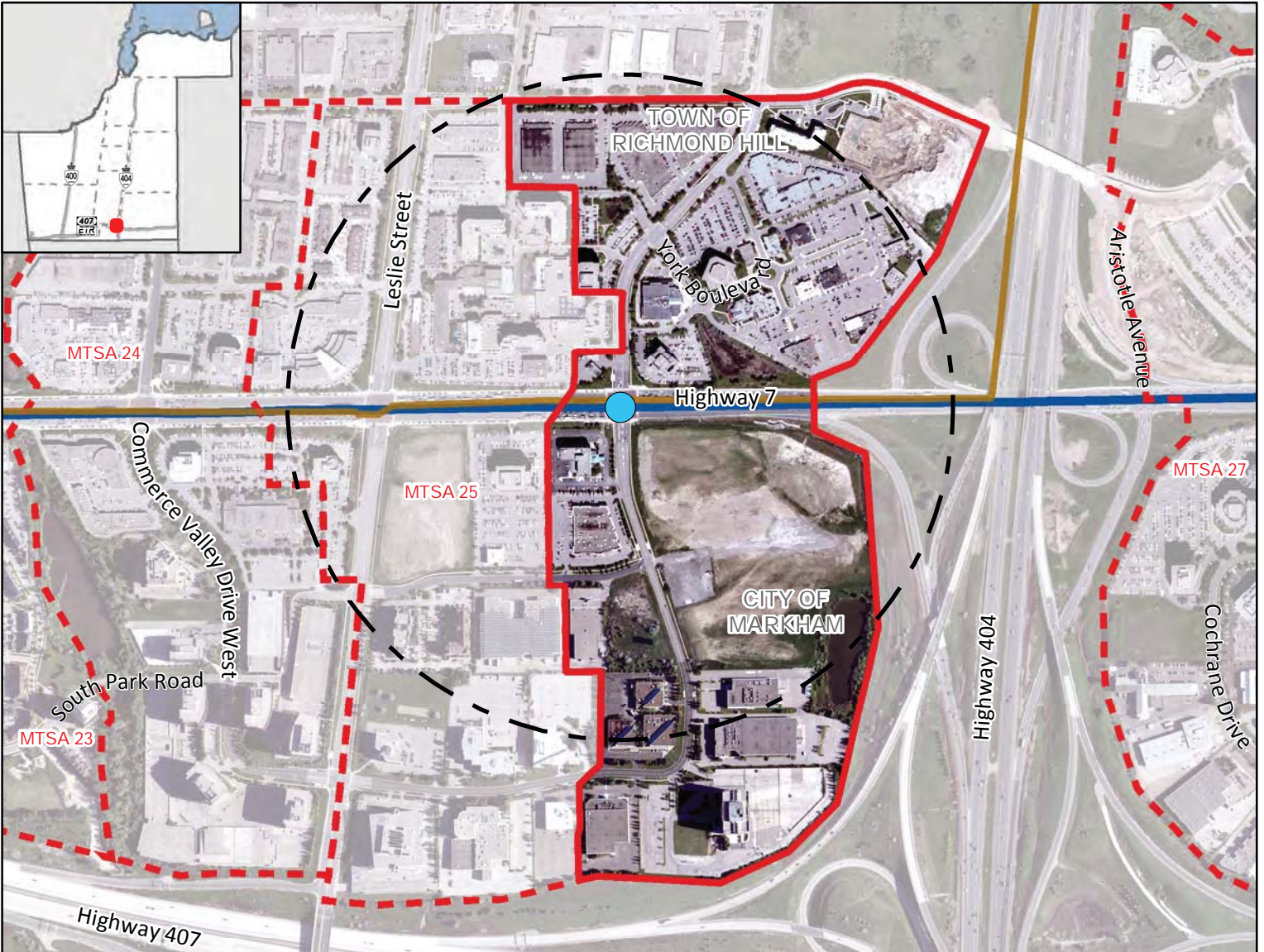
¹ Values are rounded to the nearest 5 People & Jobs per Hectare

² Values are rounded to the nearest 5%

East Beaver Creek BRT Station

On Highway 7 BRT Corridor

Along Highway 7 at East Beaver Creek Rd/Commerce Valley Dr E, Markham/Richmond Hill



Legend

Major Transit Station

● Required BRT

□ 500m Radius

▭ Draft MTSA Boundary

▭ Adjacent Draft MTSA Boundary

Priority Transit Corridors

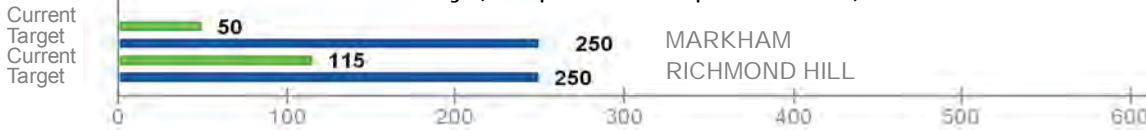
— BRT

Base Map Information

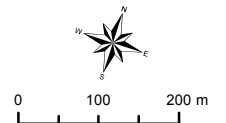
— Local Municipal Boundary

East Beaver Creek BRT Station
Gross Area:
54.61 ha

Density (People & Jobs per Hectare) ¹



Population/Job Split ²



The Regional Municipality of York
Corporate Services,
Planning and Economic Development
March 2019

Data © Queen's Printer for
Ontario 2003-2019

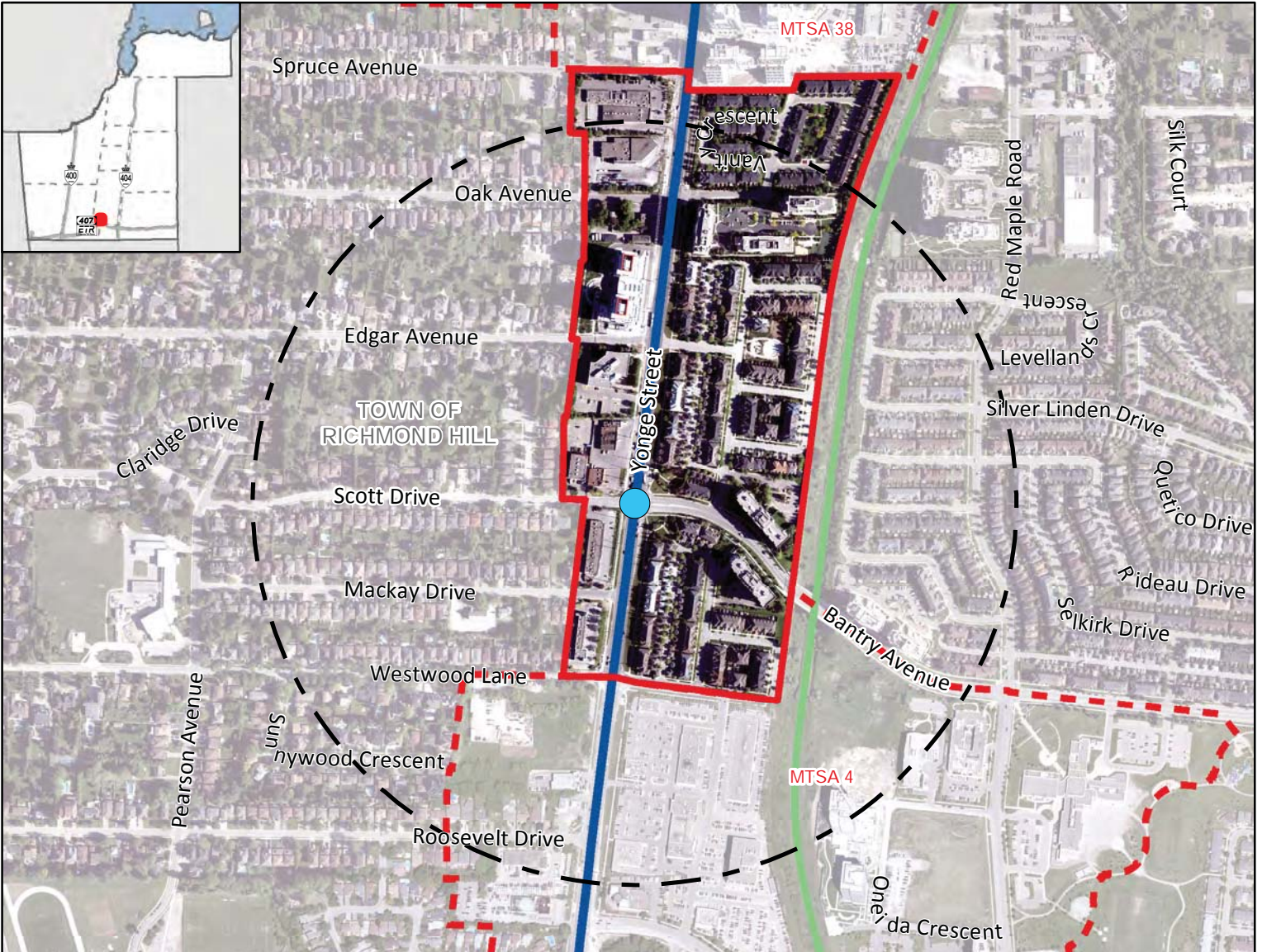
See York.ca for disclaimer information.

¹ Values are rounded to the nearest 5 People & Jobs per Hectare

² Values are rounded to the nearest 5%

Bantry-Scott BRT Station

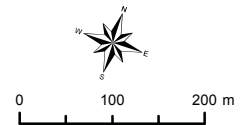
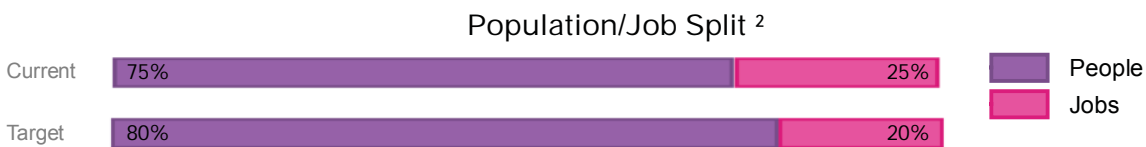
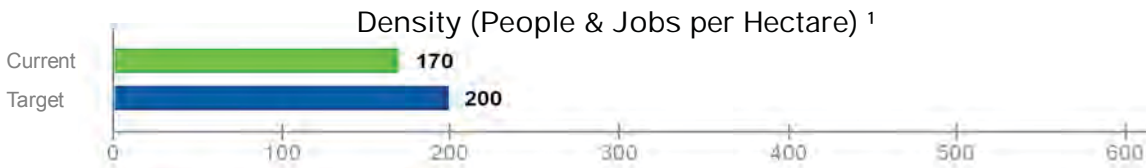
On Yonge South BRT Corridor
 Along Yonge Street at Bantry Avenue/Scott Drive, Richmond Hill



Legend

- Major Transit Station
- Required BRT
- 500m Radius
- Draft MTSA Boundary
- Adjacent Draft MTSA Boundary
- Priority Transit Corridors
- BRT
- Other Transit Lines
- GO Rail

Bantry-Scott
 BRT Station
 Gross Area:
 26.05 ha



The Regional Municipality of York
 Corporate Services,
 Planning and Economic Development
 March 2019

Data © Queen's Printer for
 Ontario 2003-2019
 See York.ca for disclaimer information.

¹ Values are rounded to the nearest 5 People & Jobs per Hectare

² Values are rounded to the nearest 5%

16th-Carrville BRT Station

On Yonge South BRT Corridor

Along Yonge Street at 16th Avenue/Carrville Road, Richmond Hill



Legend

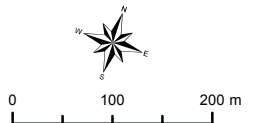
- Major Transit Station
- Required BRT
- 500m Radius
- Draft MTSA Boundary
- Adjacent Draft MTSA Boundary
- Priority Transit Corridors
- BRT
- Other Transit Lines
- GO Rail

16th-Carrville
BRT Station
Gross Area:
43.03 ha

Density (People & Jobs per Hectare) ¹



Population/Job Split ²



The Regional Municipality of York
Corporate Services,
Planning and Economic Development
March 2019

Data © Queen's Printer for
Ontario 2003-2019
See York.ca for disclaimer information.

¹ Values are rounded to the nearest 5 People & Jobs per Hectare

² Values are rounded to the nearest 5%

Weldrick BRT Station

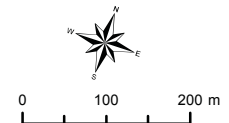
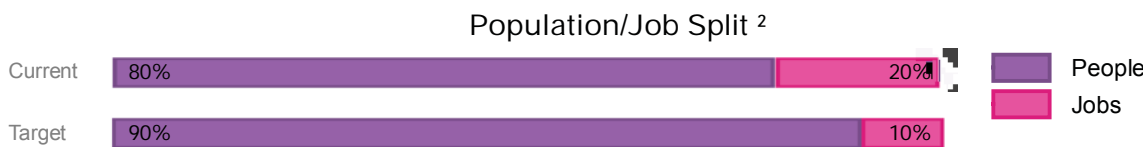
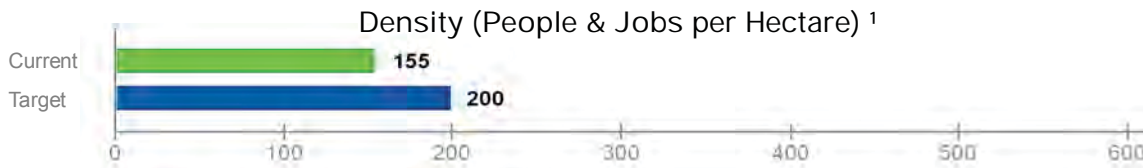
On Yonge South BRT Corridor
 Along Yonge Street at Weldrick Road, Richmond Hill



Legend

- Major Transit Station
- Required BRT
- 500m Radius
- ▭ Draft MTSA Boundary
- ▭ Adjacent Draft MTSA Boundary
- Priority Transit Corridors
- ▬ BRT
- ▬ Other Transit Lines
- ▬ GO Rail

Weldrick BRT Station
 Gross Area:
 52.47 ha



The Regional Municipality of York
 Corporate Services,
 Planning and Economic Development
 March 2019

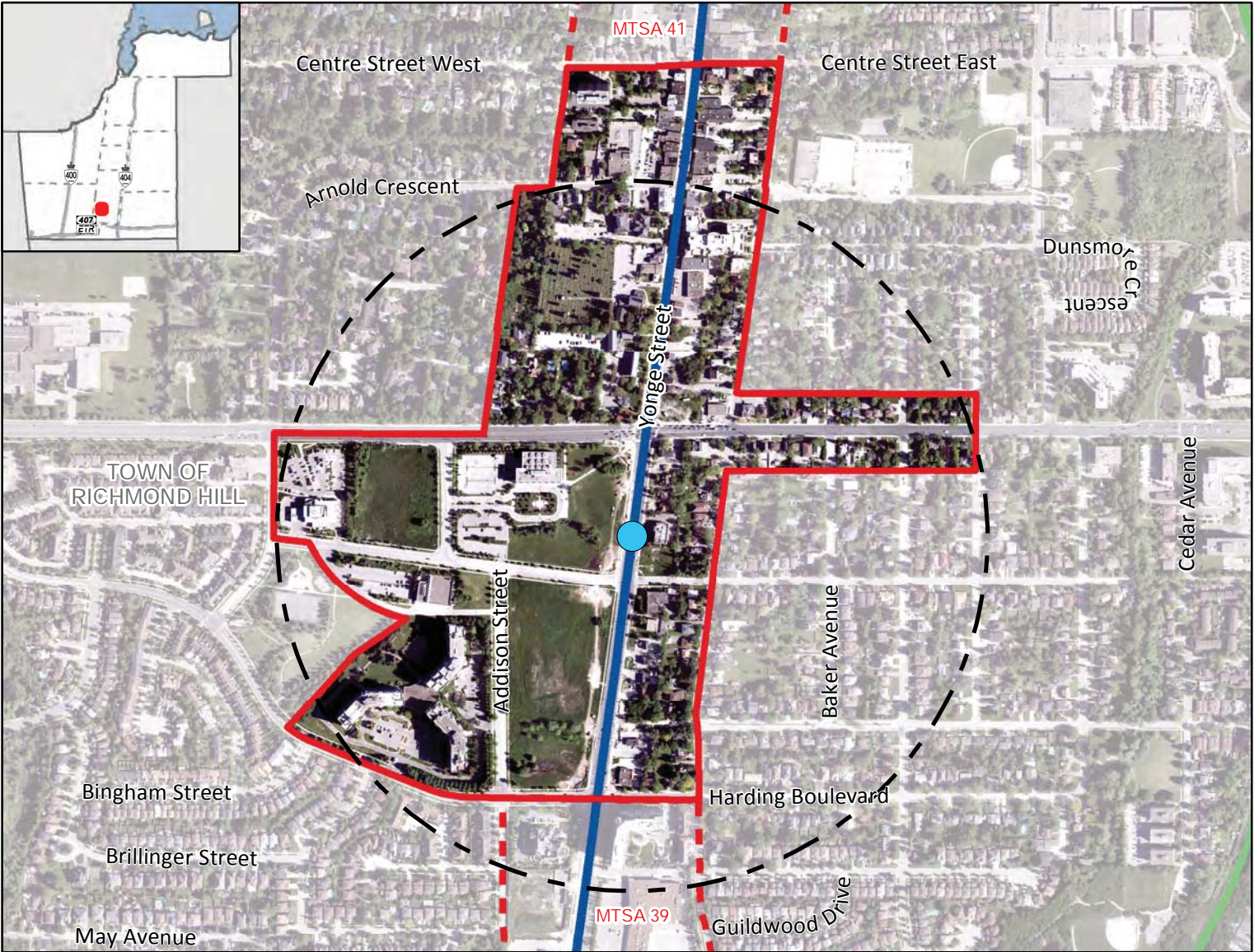
Data © Queen's Printer for
 Ontario 2003-2019
 See York.ca for disclaimer information.

¹ Values are rounded to the nearest 5 People & Jobs per Hectare

² Values are rounded to the nearest 5%

Major Mackenzie BRT Station

On Yonge South BRT Corridor
 Along Yonge Street at Major Mackenzie Drive, Richmond Hill



Legend

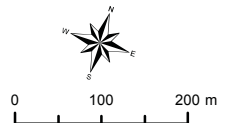
- Major Transit Station
- Required BRT
- 500m Radius
- Draft MTSA Boundary
- Adjacent Draft MTSA Boundary
- Priority Transit Corridors
- BRT
- Other Transit Corridors**
- GO Rail

Major Mackenzie
 BRT Station
 Gross Area:
 48.76 ha

Density (People & Jobs per Hectare) ¹



Population/Job Split ²



The Regional Municipality of York
 Corporate Services,
 Planning and Economic Development
 March 2019

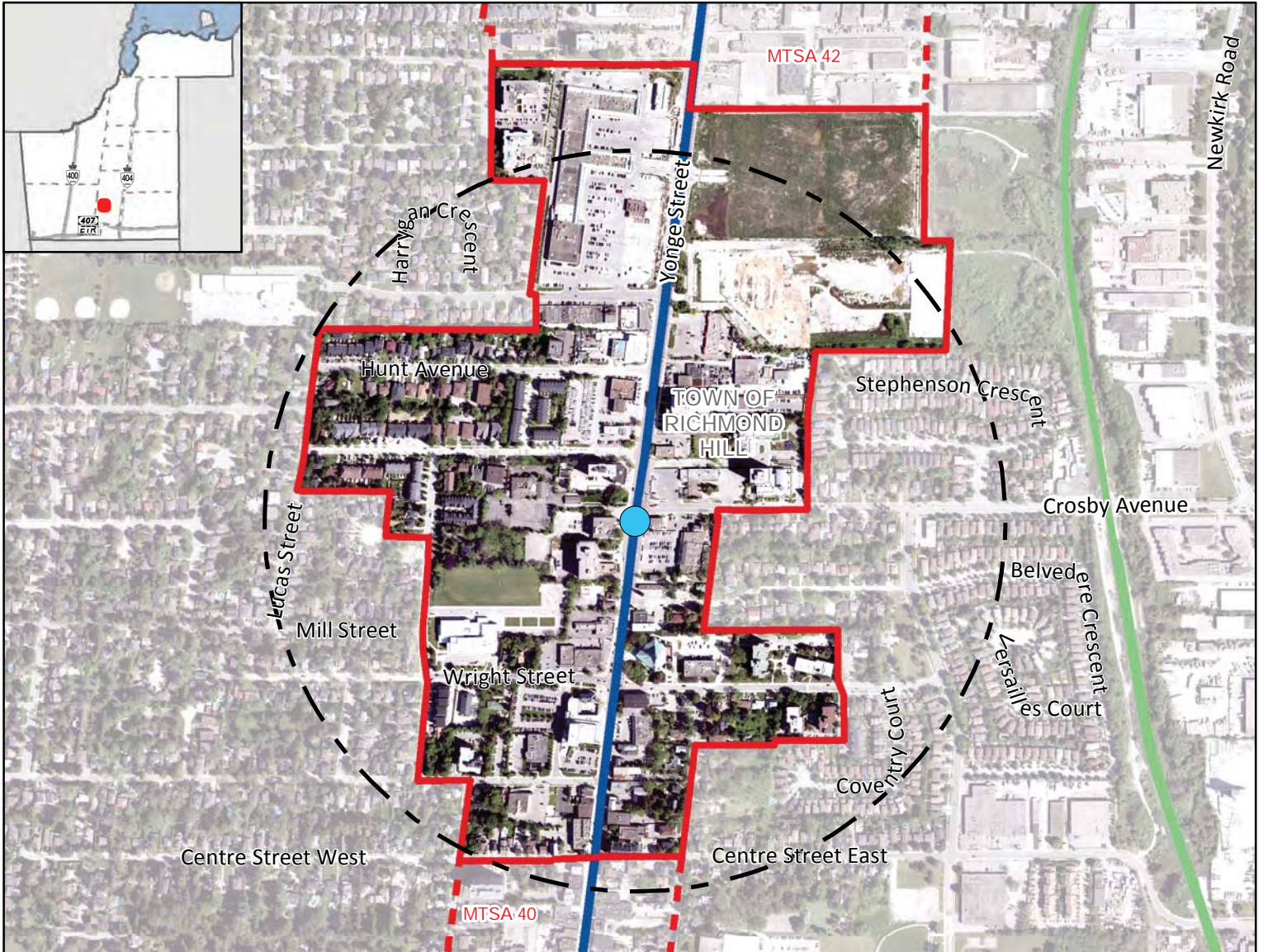
Data © Queen's Printer for
 Ontario 2003-2019
 See York.ca for disclaimer information.

¹ Values are rounded to the nearest 5 People & Jobs per Hectare

² Values are rounded to the nearest 5%

Crosby BRT Station

On Yonge South BRT Corridor
 Along Yonge Street at Crosby Avenue, Richmond Hill

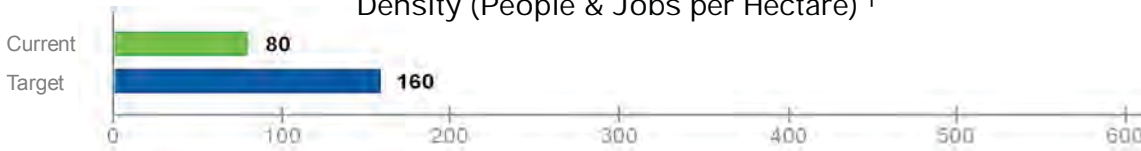


Legend

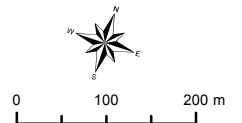
- Major Transit Station
- Required BRT
- ▭ 500m Radius
- ▭ Draft MTSA Boundary
- ▭ Adjacent Draft MTSA Boundary
- Priority Transit Corridors
- BRT
- Other Transit Corridors
- GO Rail

Crosby BRT Station
 Gross Area:
 54.98 ha

Density (People & Jobs per Hectare) ¹



Population/Job Split ²



The Regional Municipality of York
 Corporate Services,
 Planning and Economic Development
 March 2019

Data © Queen's Printer for
 Ontario 2003-2019

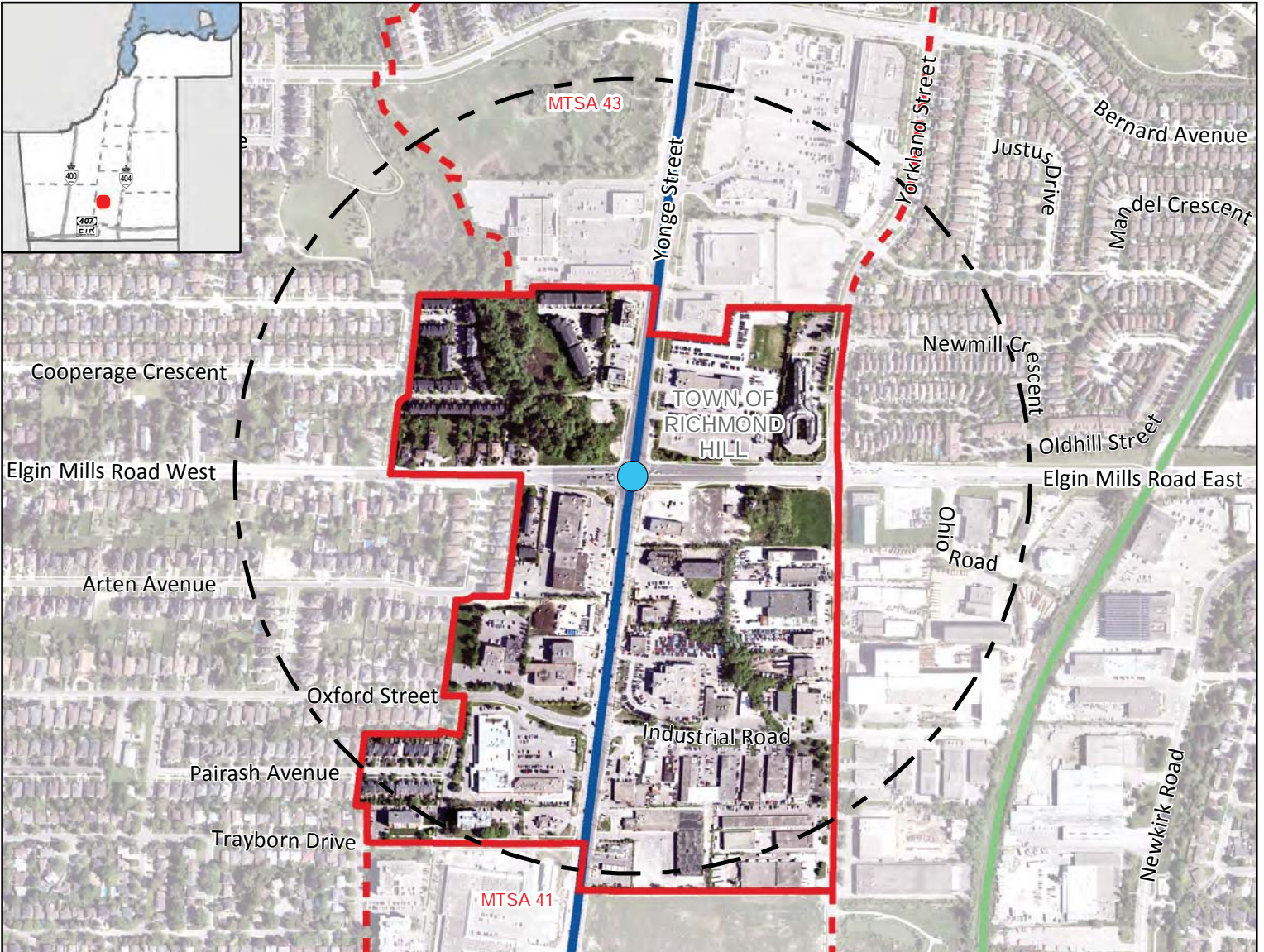
See York.ca for disclaimer information.

¹ Values are rounded to the nearest 5 People & Jobs per Hectare

² Values are rounded to the nearest 5%

Elgin Mills BRT Station

On Yonge South BRT Corridor
 Along Yonge Street at Elgin Mills Road, Richmond Hill

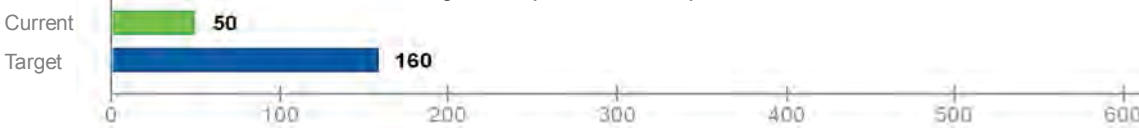


Legend

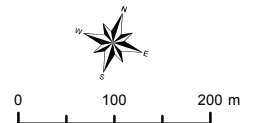
- Major Transit Station
- Required BRT
- 500m Radius
- ▭ Draft MTSA Boundary
- ▭ Adjacent Draft MTSA Boundary
- Priority Transit Corridors
- BRT
- Other Transit Lines
- GO Rail

Elgin Mills BRT Station
 Gross Area:
 36.38 ha

Density (People & Jobs per Hectare) ¹



Population/Job Split ²



The Regional Municipality of York
 Corporate Services,
 Planning and Economic Development
 March 2019

Data © Queen's Printer for
 Ontario 2003-2019
 See York.ca for disclaimer information.

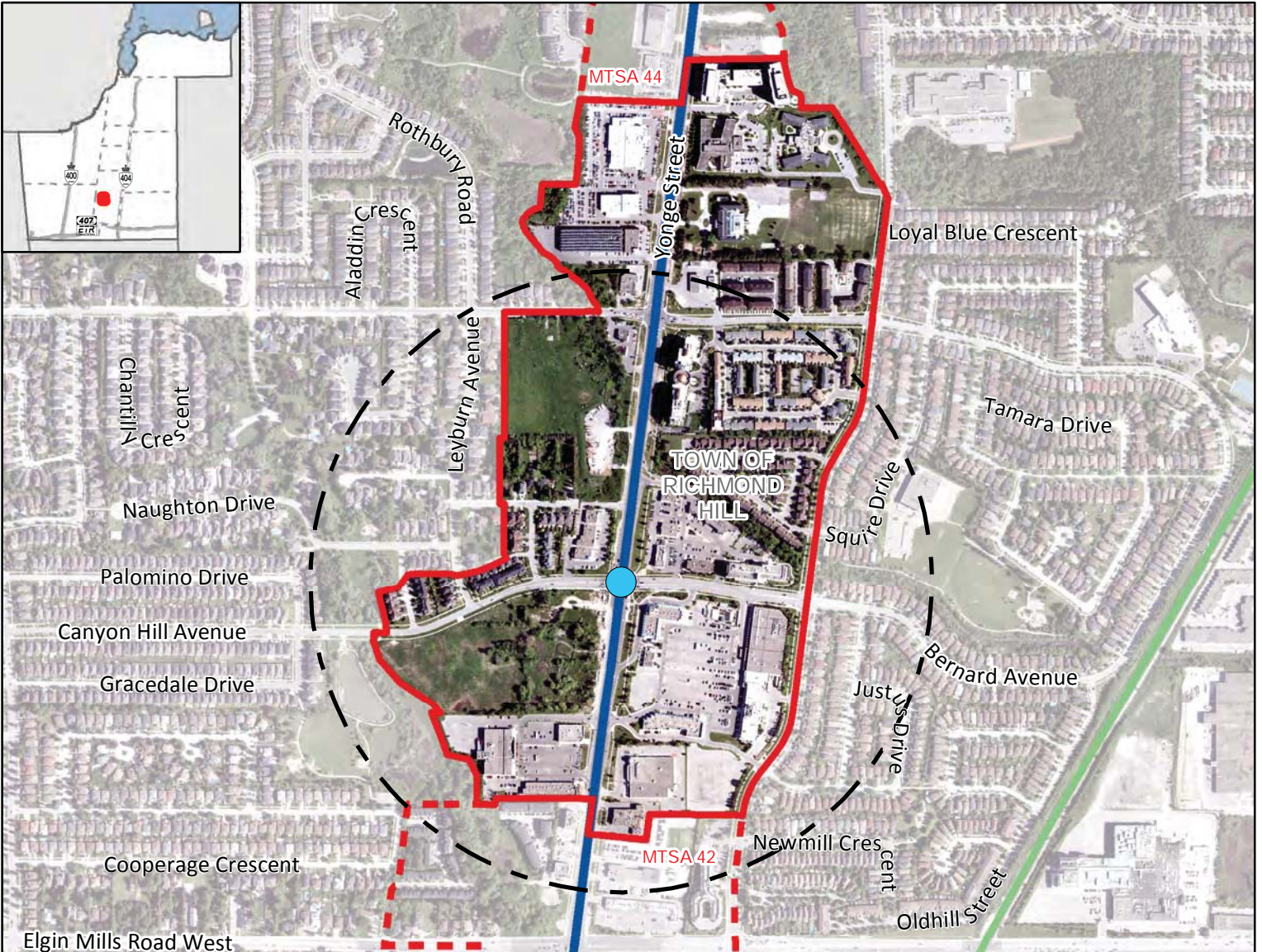
¹ Values are rounded to the nearest 5 People & Jobs per Hectare

² Values are rounded to the nearest 5%

Bernard BRT Station

On Yonge South BRT Corridor

Along Yonge Street at Bernard Avenue/Canyon Hill Avenue, Richmond Hill



Major Transit Station

- Required BRT
- 500m Radius
- Draft MTSA Boundary
- Adjacent Draft MTSA Boundary

Legend

BRT

Priority Transit Corridors

GO Rail

Bernard BRT Station

Gross Area:
63.64 ha

Density (People & Jobs per Hectare) ¹

Category	Current	Target
Density	80	200

Population/Job Split ²

Category	People	Jobs
Current	50%	50%
Target	80%	20%

York Region

The Regional Municipality of York
Corporate Services,
Planning and Economic Development
March 2019
Data © Queen's Printer for
Ontario 2003-2019
See York.ca for disclaimer information.

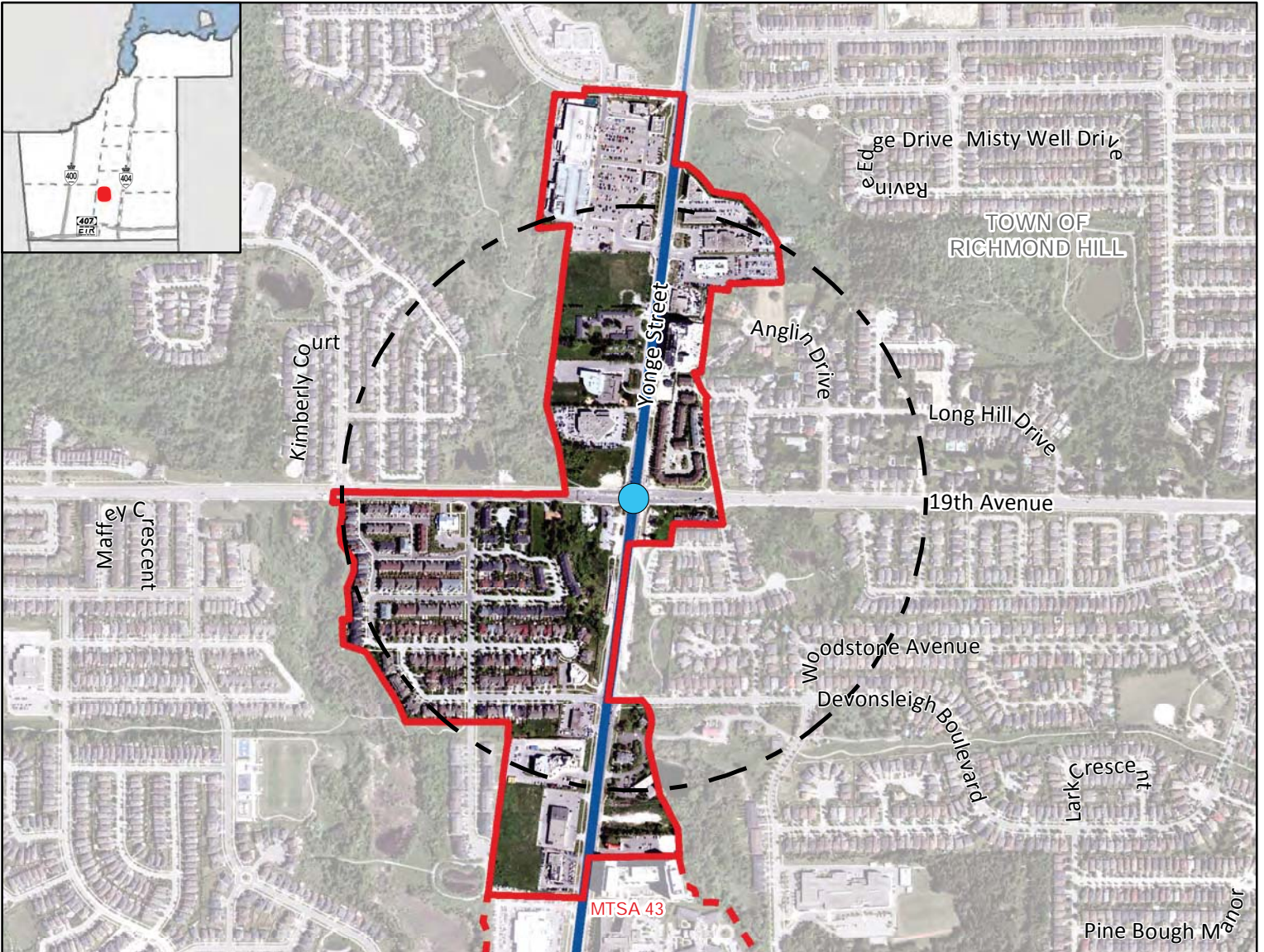
¹ Values are rounded to the nearest 5 People & Jobs per Hectare

² Values are rounded to the nearest 5%

19th-Gamble BRT Station

On Yonge South BRT Corridor

Along Yonge Street at 19th Avenue/Gamble Road, Richmond Hill

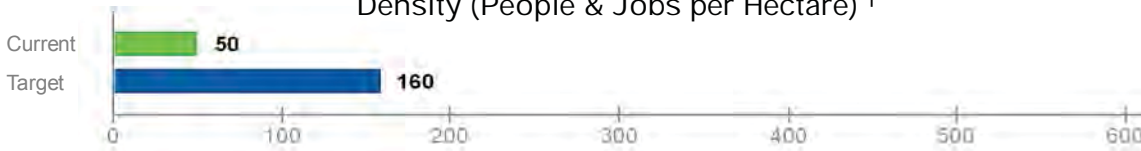


Legend

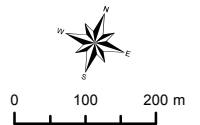
- Major Transit Station
- Required BRT
- 500m Radius
- Draft MTSA Boundary
- Adjacent Draft MTSA Boundary
- Priority Transit Corridors
- BRT
- Other Transit Lines
- BRT

19th-Gamble BRT Station
Gross Area:
45.31 ha

Density (People & Jobs per Hectare) ¹



Population/Job Split ²



The Regional Municipality of York
Corporate Services,
Planning and Economic Development
March 2019

Data © Queen's Printer for Ontario 2003-2019
See York.ca for disclaimer information.

¹ Values are rounded to the nearest 5 People & Jobs per Hectare

² Values are rounded to the nearest 5%