

MAP D SRPRS.20.010 Registered M-PLAN

PLAN 65M-4431

I CERTIFY THAT THIS PLAN IS REGISTERED IN THE LAND REGISTRY OFFICE FOR THE LAND TITLES DIVISION OF YORK REGION NO. 65 AT 16:04 O'CLOCK ON THE 21st DAY OF NOVEMBER, 2014, AND ENTERED IN THE PARCEL REGISTER FOR PROPERTY IDENTIFIER Nos. 03193-1236 AND 03193-1466 AND THE REQUIRED CONSENTS ARE REGISTERED AS PLAN DOCUMENT NO. YR2221292

"M. MUBIC"
REPRESENTATIVE FOR LAND REGISTRAR

THIS PLAN COMPRISES ALL OF PIN 03193-1236 AND ALL OF PIN 03193-1466

SUBJECT TO EASEMENT OVER PART 9, PLAN 65R-33174 AS SET OUT IN INST. NO. YR1450633 (AFFECTS PART OF LOT 6 AND PART OF BUSH RIDGES AVENUE)

SUBJECT TO EASEMENT OVER PART 15, PLAN 65R-33174 AS SET OUT IN INST. NO. YR1450635 (AFFECTS PART OF LOT 10)

PLAN OF SUBDIVISION OF
PART OF LOT 57
CONCESSION 1, EAST OF YONGE STREET
(GEOGRAPHIC TOWNSHIP OF MARKHAM, COUNTY OF YORK)
TOWN OF RICHMOND HILL
REGIONAL MUNICIPALITY OF YORK
SCALE 1:250

SCHAEFFER DZALDOV BENNETT LTD.

NOTES

SYMBOL	DENOTES	PLANTED SHORT STANDARD IRON BAR
□	SSIB	PLANTED IRON BAR
■	SSIB	FOUND MONUMENT
■	SSIB	STANDARD IRON BAR
■	SSIB	SHORT STANDARD IRON BAR
■	SSIB	IRON BAR
■	SSIB	PLAN 65R-34242
■	SSIB	PLAN 65R-33174
■	SSIB	ROBERT B. LEE, O.L.S.
■	SSIB	SCHAEFFER DZALDOV BENNETT LTD.
■	SSIB	J.K. YOUNG, O.L.S.
■	SSIB	WITNESS
■	SSIB	E.Y.S. EAST OF YONGE STREET
■	SSIB	BOARD FENCE

0.30 RESERVES HAVE BEEN EXAGGERATED FOR CLARITY.

ALL FOUND MONUMENTS ARE NUMBERED 922 UNLESS NOTED OTHERWISE.
ALL FOUND MONUMENTS ARE SSIB'S UNLESS NOTED OTHERWISE.

TOTAL AREA OF SUBDIVISION = 0.8313 Ha.

BEARINGS ARE MTM GRID, DERIVED FROM SPECIFIED CONTROL POINTS 92010 AND 92013 (TOWN OF RICHMOND HILL) MTM ZONE 10, NAD83 (ORIGINAL).

DISTANCES ARE GROUND AND CAN BE CONVERTED TO GRID BY MULTIPLYING BY A COMBINED SCALE FACTOR OF 0.999855

SPECIFIED CONTROL POINTS (SCPs): MTM ZONE 10, NAD83 (ORIGINAL) COORDINATES TO URBAN ACCURACY PER SEC. 14(2) OF OREG. 216/10		
POINT ID.	NORTHING	EASTING
SCP 92010	4863749.085	31031.246
SCP 92013	4865579.475	310525.759
COORDINATES CANNOT, IN THEMSELVES, BE USED TO RE-ESTABLISH CORNERS OR BOUNDARIES SHOWN ON THIS PLAN		

SURVEYOR'S CERTIFICATE

I CERTIFY THAT:
1. THIS SURVEY AND PLAN ARE CORRECT AND IN ACCORDANCE WITH THE SURVEYS ACT, THE SURVEYORS ACT, THE LAND TITLES ACT AND THE REGULATIONS MADE UNDER THEM.

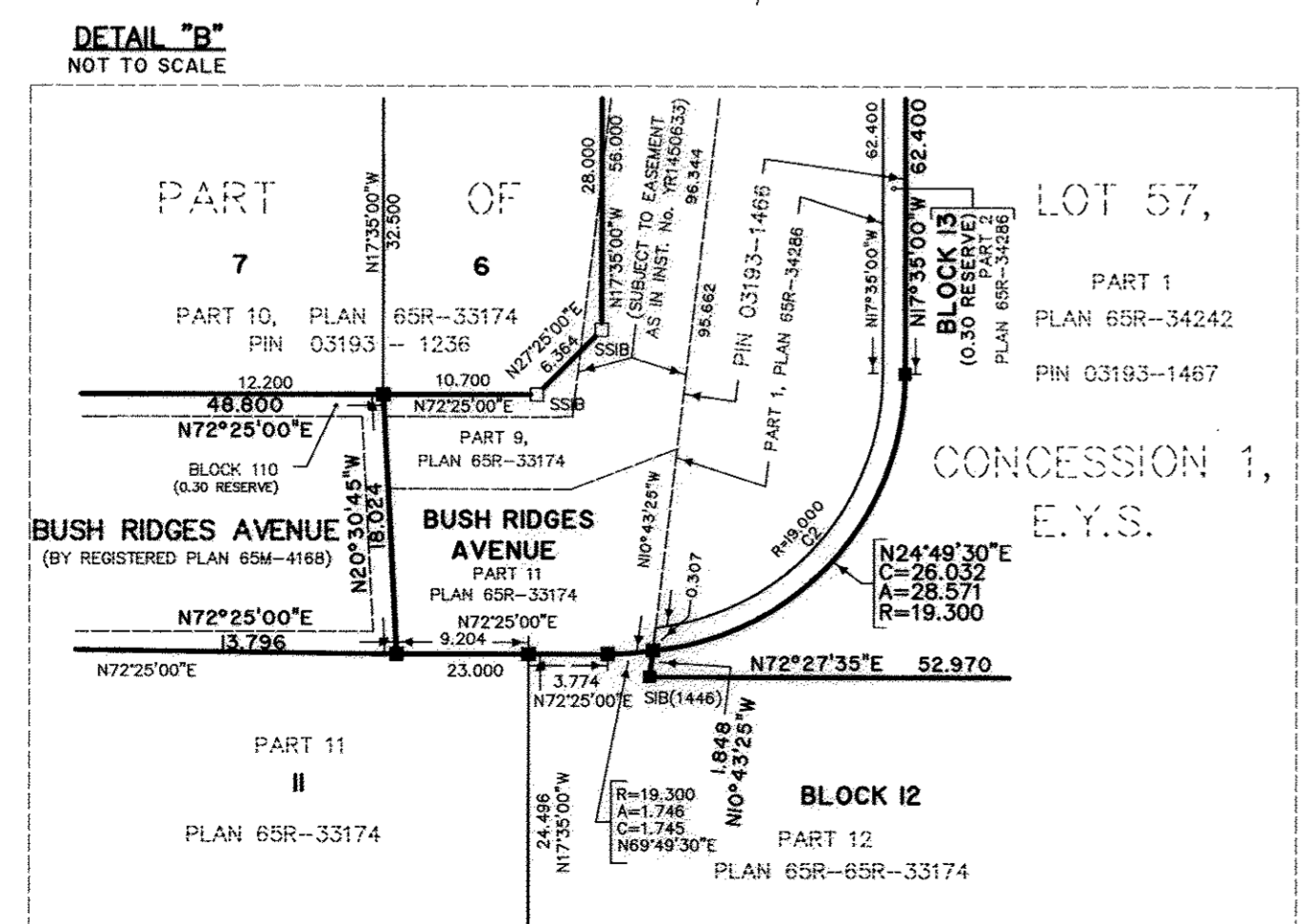
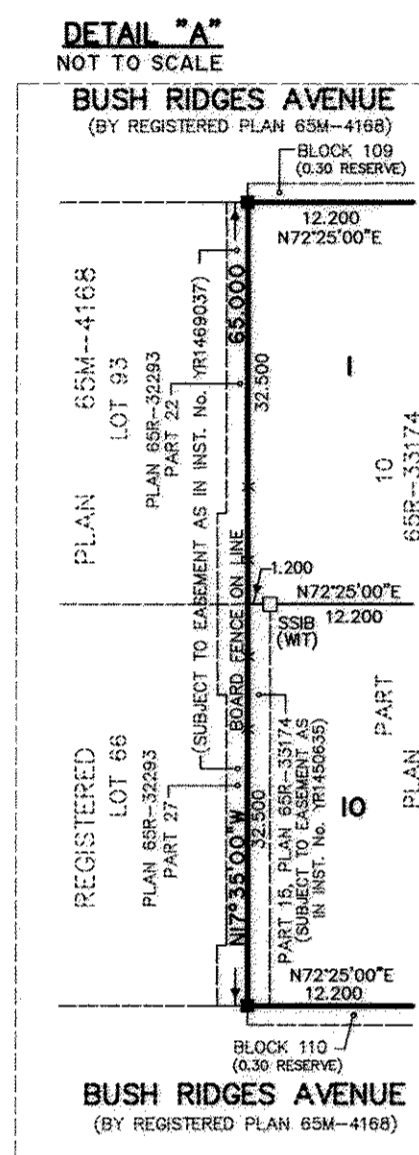
2. THE SURVEY WAS COMPLETED ON THE 01st DAY OF AUGUST, 2013.

DATE 01 OCTOBER 9, 2013.

DAN DZALDOV
Ontario Land Surveyor

SCHAEFFER DZALDOV BENNETT LTD.
ONTARIO LAND SURVEYORS
64 JARDIN DRIVE CONCORD, ONTARIO L4K 3P3 TEL: (416) 987-0101
CALC: SL DRAWN: SB CHECKED: WMF SCALE: 1:250 JOB NO. 04-030-10-02A

PHASE 3



CURVE TABLE				
NUM	ARC	RADIUS	BEARING	CHORD
C1	15.245	19.000	N40°34'10"W	14.840
C2	28.062	19.000	N24°43'45"E	25.580

OWNER'S CERTIFICATE

ALL OF PIN 03193-1236
THIS IS TO CERTIFY THAT:
1. LOTS 1 TO 11, BOTH INCLUSIVE, BLOCK 12, AND PART OF STREET NAME BUSH RIDGES AVENUE HAVE BEEN LAID OUT IN ACCORDANCE WITH OUR INSTRUCTIONS.
2. THE STREET IS HEREBY DEDICATED TO THE CORPORATION OF THE TOWN OF RICHMOND HILL AS PUBLIC HIGHWAY.

DATED THE 01st DAY OF OCTOBER, 2013.
RICHMOND HILL JEFFERSON FOREST INC.

BARRY ZAGDANER, AUTHORIZED SIGNING OFFICER
I HAVE THE AUTHORITY TO BIND THE CORPORATION

APPROVED BY THE TOWN OF RICHMOND HILL UNDER SECTION 51 OF THE PLANNING ACT, R.S.O. 1990.
THIS 01st DAY OF OCTOBER, 2013.

ANA BASSIOS
COMMISSIONER OF PLANNING AND REGULATORY SERVICES

OWNER'S CERTIFICATE

ALL OF PIN 03193-1466
THIS IS TO CERTIFY THAT:
1. PART OF STREET NAME BUSH RIDGES AVENUE AND 0.30 RESERVE, NAMELY BLOCK 13, HAVE BEEN LAID OUT IN ACCORDANCE WITH OUR INSTRUCTIONS.
2. THE STREET IS HEREBY DEDICATED TO THE CORPORATION OF THE TOWN OF RICHMOND HILL AS A PUBLIC HIGHWAY.

DATED THE 01st DAY OF OCTOBER, 2013.
THE CORPORATION OF THE TOWN OF RICHMOND HILL

DAVID BARROW - MAYOR
DONNA MCLEARY - CLERK
WE HAVE THE AUTHORITY TO BIND THE CORPORATION