

METRIC: DISTANCES SHOWN ON THIS PLAN ARE IN METRES AND CAN BE CONVERTED TO FEET BY DIVIDING BY 0.3048.

NOTES

- DENOTES IRON BAR PLANTED
- FOUND MONUMENT
- SIB STANDARD IRON BAR
- SSIB SHORT STANDARD IRON BAR
- IB IRON BAR
- S22 SCHAEFFER & DZALDOV LIMITED
- I215 O. ERTL, O.L.S.
- RPE RADI-PEINTEK & EDWARD SURVEYING LTD.
- P PLAN 65R-30416
- CLF CHAIN LINK FENCE
- BF BOARD FENCE

ALL FOUND MONUMENTS ARE NUMBERED 922 UNLESS NOTED OTHERWISE.
ALL FOUND MONUMENTS ARE SSB'S UNLESS NOTED OTHERWISE.

BEARINGS ARE ASTRONOMIC AND ARE REFERRED TO THE WESTERLY LIMIT OF PART I AS SHOWN ON PLAN 65R-30545, HAVING A BEARING OF N16°23'55"W.

0.30 RESERVES HAVE BEEN EXAGGERATED FOR CLARITY.

TOTAL AREA OF SUBDIVISION = 0.7099 ha.

PLAN 65M-4049

I CERTIFY THAT THIS PLAN IS REGISTERED IN THE LAND REGISTRY OFFICE FOR THE LAND TITLES DIVISION OF YORK REGION NO. 65 AT 09:39 O'CLOCK ON THE 1ST DAY OF MAY 2008 AND ENTERED IN THE PARCEL REGISTER FOR PROPERTY IDENTIFIER NO.'s 03215-1063, 03215-1064, 03215-1065 & 03215-1067 AND THE REQUIRED CONSENTS ARE REGISTERED AS PLAN DOCUMENT NO. YR1157098

"D. WALTERS"
Asst. Dep. Land Registrar

NOTE: THIS PLAN COMPRISES PART OF PINS 03215-1063, 03215-1064 AND 03215-1065 AND ALL OF PIN 03215-1067.

SUBJECT TO EASEMENT OVER PART 4, PLAN 65R-30541 AS SET OUT IN YR1154888 + INST. No. YR 751474 (AFFECTS PART OF LOTS 4 AND 5).

PLAN OF SUBDIVISION OF
PART OF LOTS 38, 41, 42 AND 43
REGISTERED PLAN 1960
TOWN OF RICHMOND HILL
REGIONAL MUNICIPALITY OF YORK
SCALE 1 : 500

SCHAEFFER & DZALDOV LIMITED

OWNER'S CERTIFICATE

PINS 03215-1065 AND 03215-1067

THIS IS TO CERTIFY THAT:

1. LOTS 2 TO 5, BOTH INCLUSIVE, THE STREET, NAMELY PART OF PETROLIA COURT (LYING WITHIN THE LIMITS OF PART I, PLAN 65R-30541 AND PART I, PLAN 65R-30545) AND 0.30 RESERVE, NAMELY BLOCK 7, HAVE BEEN LAID OUT IN ACCORDANCE WITH OUR INSTRUCTIONS;

2. THE STREET IS HEREBY DEDICATED TO THE CORPORATION OF THE TOWN OF RICHMOND HILL AS A PUBLIC HIGHWAY.

DATED THE 15TH DAY OF APRIL 2008.

BAYVIEW MANOR HOMES INC.

L. Greenbaum
LOUIS GREENBAUM - VICE PRESIDENT
I HAVE THE AUTHORITY TO BIND THE CORPORATION.

OWNER'S CERTIFICATE

PINS 03215-1064

THIS IS TO CERTIFY THAT:

1. LOT 6, THE STREET, NAMELY PART OF PETROLIA COURT (LYING WITHIN THE LIMITS OF PART I, PLAN 65R-30540 AND 0.30 RESERVE, NAMELY BLOCK 6, HAVE BEEN LAID OUT IN ACCORDANCE WITH OUR INSTRUCTIONS;

2. THE STREET IS HEREBY DEDICATED TO THE CORPORATION OF THE TOWN OF RICHMOND HILL AS A PUBLIC HIGHWAY.

DATED THE 15TH DAY OF APRIL 2008.

Salvatore Bonanno *Teresa Bonanno*
SALVATORE BONANNO TERESA BONANNO
AS JOINT TENANTS

OWNER'S CERTIFICATE

PINS 03215-1063

THIS IS TO CERTIFY THAT:

1. LOT 1 HAS BEEN LAID OUT IN ACCORDANCE WITH OUR INSTRUCTIONS;

DATED THE 15TH DAY OF APRIL 2008.

William Harry Perks *Lynda Joy Perks*
WILLIAM HARRY PERKS LYNDA JOY PERKS
AS JOINT TENANTS

SURVEYOR'S CERTIFICATE

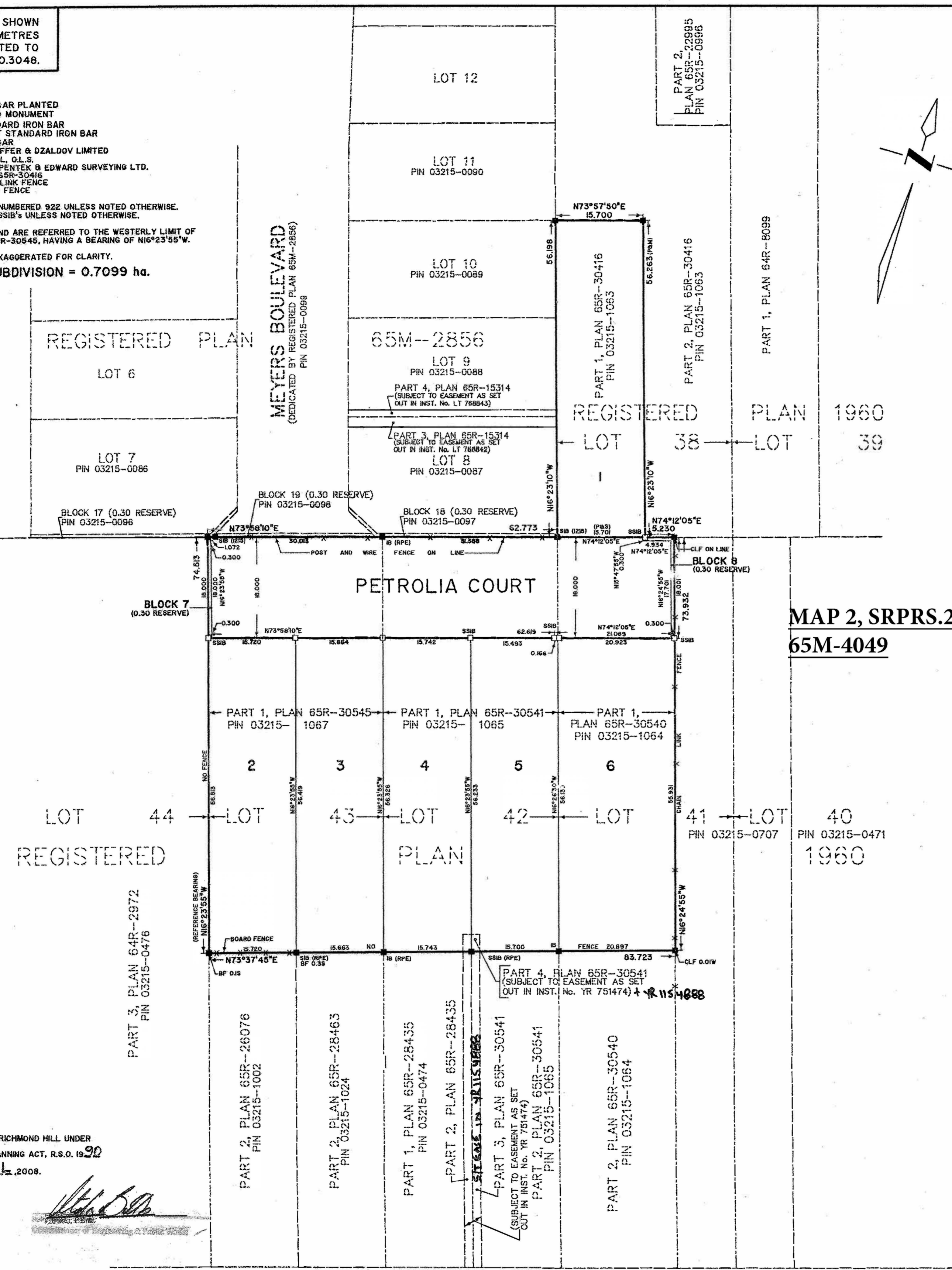
I CERTIFY THAT:

1. THIS SURVEY AND PLAN ARE CORRECT AND IN ACCORDANCE WITH THE SURVEYS ACT, THE SURVEYORS ACT, THE LAND TITLES ACT AND THE REGULATIONS MADE UNDER THEM.

2. THE SURVEY WAS COMPLETED ON THE 18TH DAY OF JANUARY 2008.

DATE JANUARY 22, 2008. *W.M. Fenton*

W.M. FENTON
Ontario Land Surveyor



MAP 2, SRPRS.20.023
65M-4049

APPROVED BY THE TOWN OF RICHMOND HILL UNDER SECTION 51 OF THE PLANNING ACT, R.S.O. 1990 THIS 29TH DAY OF APRIL 2008.

[Signature]
Surveyor

BIRCH AVENUE (BY REGISTERED PLAN 1960)
PIN 03215-0713

SCHAEFFER & DZALDOV LIMITED
ONTARIO LAND SURVEYORS
64 JARDIN DRIVE CONCORD, ONTARIO L4K 3P3 TEL.(416)987-0101
DRAWN ACAD/LW CHECKED WMF SCALE 1:500 JOB NO. 06-212-01B