

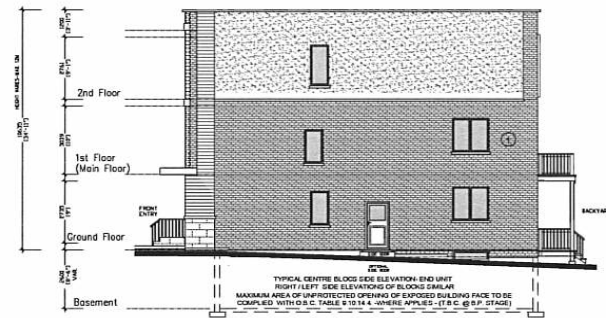
MAP 11 - PROPOSED ELEVATIONS - Building Block Side and Rear Elevations



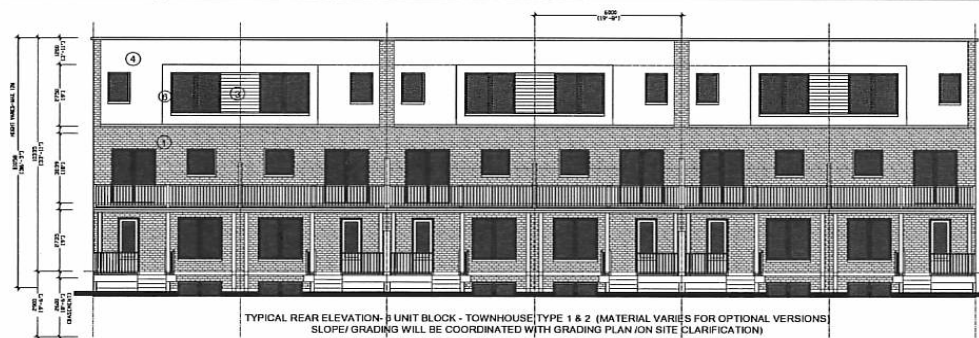
CENTRE BLOCK UNITS / REAR ELEVATION
SLOPE/ GRADING WILL BE COORDINATED WITH GRADING PLAN ON SITE (CLARIFICATION)

5 Upgraded Rear Elevation- 6Unit Building Block #5
A303 SCALE: 1:100 (4 Unit Bldg. Block #6: Similar)

REAR ELEVATIONS OF CENTRE BLOCK UNITS WILL BE UPGRADED TO MATCH FRONT ELEVATIONS, AS PER CEMCO'S SPECIFICATIONS DESIGN GUIDELINES TO PROVIDE FRIENDLY REAR ELEVATIONS (SMALL FRONTAGE BLOCKS) FOR CENTRE BLOCK UNITS.

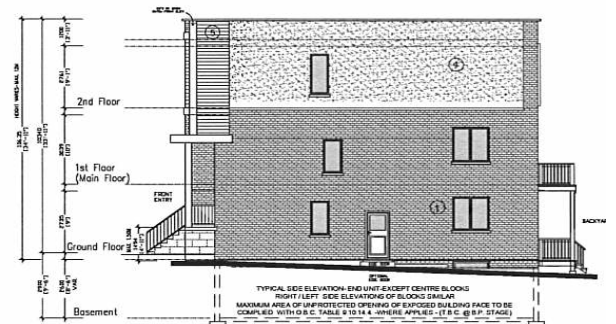


6 Typical Side Elevation-Centre Block Units
A303 SCALE: 1:100 Centre Blk. TH. End Units- V4



TYPICAL REAR ELEVATION- 6 UNIT BLOCK - TOWNHOUSE (TYPE 1 & 2 (MATERIAL VARIES FOR OPTIONAL VERSIONS)
SLOPE/ GRADING WILL BE COORDINATED WITH GRADING PLAN ON SITE (CLARIFICATION)

4 Typical Rear Elevation- 6Unit TH Building Block
A303 SCALE: 1:100 (3, 4, & 8 Unit Bldg. Block Similar)



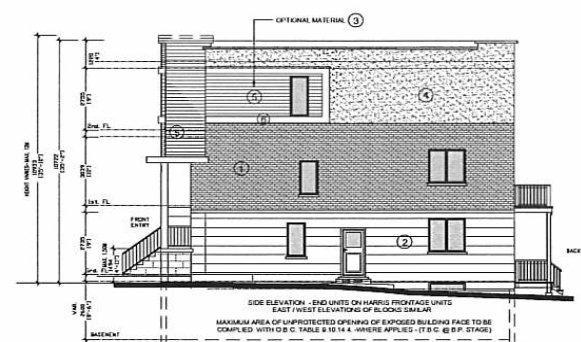
3 Typical Side Elevation-Internal Units
A303 SCALE: 1:100 Typical TH. End Units- V1

MATERIAL LEGEND

- 1 BRICK MASONRY
- 2 PINE CAST STONE
- 3 HANDPAINTED SIDING
- 4 F.F.SI STUCCO
- 5 CEDAR S/ENGRAINED
- 6 ALUMINUM PANEL
- 7 CONCRETE



2 Side Elevation-End Unit- Site Entry Units
A303 SCALE: 1:100 Harris Ave. TH. - End Unit-V3



1 Typical Side Elevation-End Unit
A303 SCALE: 1:100 Harris Ave. TH. - End Unit-V2

NOTE:
THIS DRAWING IS JUST FOR SITE PLAN APPROVAL REVIEW
AND MUST BE UPDATED AT THE TIME OF BUILDING PERMIT
TO SUIT SITE CONDITIONS AND PROJECT REQUIREMENTS.

BLOCK 09 File Nos. D02-14038
D03-14016

**CITY OF RICHMOND HILL
PLANNING AND REGULATORY
SERVICES DEPARTMENT**

LAP/SS SRPRS 20.054