

LOT 121 REGISTERED PLAN M-37
 LOT 120

N71°53'20"E p1, p2 & meas
 79.12 meas 79.25 p1

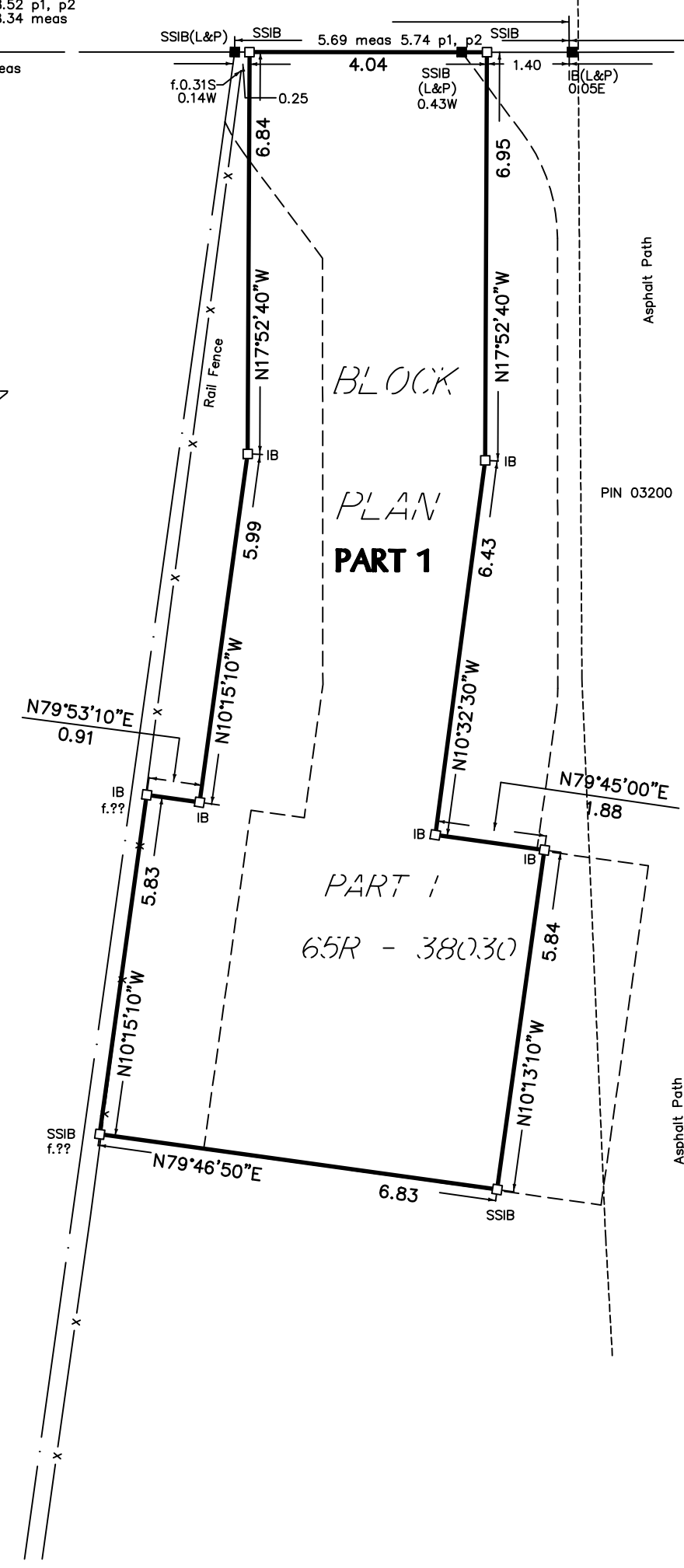
LOT 118

REGISTERED

LOT 117

PIN 03200-0061

COON'S ROAD
 BY REGISTERED PLAN M-36
 PIN 03206-0003



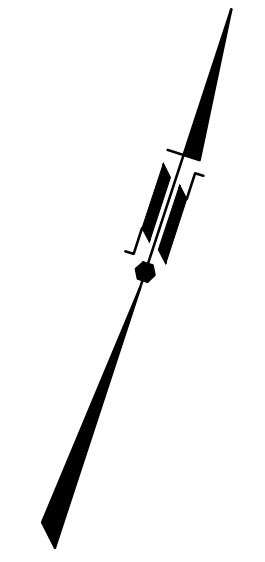
Q

BLOCK F
 LOT 16
 1" Reserve

CYNTHIA CRESCENT

BLOCK G
 LOT 14
 1" Reserve

M-36



LEGEND

- SSIB SHORT STANDARD IRON BAR
- SIB STANDARD IRON BAR
- IB IRON BAR
- RIB ROUND IRON BAR
- FOUND
- SET
- MEASURED
- meas MEASURED
- SCP SPECIFIED CONTROL POINT
- ORP OBSERVED REFERENCE POINT
- p1 REGISTERED PLAN M-36
- p2 PLAN 65R-38030
- (1110) R.D. TOMLINSON, O.L.S.
- (L&P) LLOYD & PURCELL LTD.
- f. FENCE

SURVEYOR'S CERTIFICATE
 I CERTIFY THAT :
 1. THIS SURVEY AND PLAN ARE CORRECT AND IN ACCORDANCE WITH THE SURVEYS ACT, THE SURVEYORS ACT, THE LAND TITLES ACT AND THE REGULATIONS MADE UNDER THEM.
 2. THE SURVEY WAS COMPLETED ON THE DAY OF OCTOBER, 2019.

OCTOBER 10, 2019
 DATE T.M. PURCELL
 ONTARIO LAND SURVEYOR

I REQUIRE THIS PLAN TO BE DEPOSITED UNDER THE LAND TITLES ACT.
 DATE OCTOBER 2019
 T.M. PURCELL, O.L.S.

PLAN 65R-
 RECEIVED AND DEPOSITED
PRELIMINARY
 REPRESENTATIVE FOR THE LAND REGISTRAR FOR THE LAND TITLES DIVISION OF YORK REGION (No. 65)

SCHEDULE

PART	PART OF BLOCK	PLAN	PART OF PIN	AREA m ²
1	Q	REGISTERED PLAN M-36	PIN 03200-0069	93

**PLAN OF SURVEY OF
 PART OF BLOCK Q
 REGISTERED PLAN M-36
 TOWN OF RICHMOND HILL
 REGIONAL MUNICIPALITY OF YORK**

SCALE 1:100



LLOYD & PURCELL A DIVISION OF SCHAEFFER DZALDOV BENNETT LTD.

NOTES

- DISTANCES AND COORDINATES SHOWN ON THIS PLAN ARE IN METRES AND CAN BE CONVERTED TO FEET BY DIVIDING BY 0.3048.
- DISTANCES SHOWN ON THIS PLAN ARE GROUND DISTANCES AND CAN BE CONVERTED TO GRID BY MULTIPLYING BY THE COMBINED SCALE FACTOR OF 0.99974.
- BEARINGS SHOWN ON THIS PLAN ARE UTM GRID BEARINGS AND ARE DERIVED FROM OBSERVED REFERENCE POINTS A AND B, BY REAL TIME NETWORK (RTN) OBSERVATIONS, UTM ZONE 17, NAD 83 (CSRS).

OBSERVED REFERENCE POINTS (ORP's) DERIVED FROM GPS OBSERVATIONS USING REAL TIME NETWORK COORDINATES UTM ZONE 17, NAD 83 (CSRS) COORDINATES TO URBAN ACCURACY PER SEC.14 (2) OF O.REG. 216/10.		
POINT ID	NORTHING	EASTING
ORP A	4868323.471	623198.550
ORP B	4868389.310	623399.227

COORDINATES CANNOT, IN THEMSELVES, BE USED TO RE-ESTABLISH CORNERS OR BOUNDARIES SHOWN ON THIS PLAN.

FOR BEARING COMPARISONS, A ROTATION OF 0°57'00" COUNTER-CLOCKWISE WAS APPLIED TO BEARINGS ON PLAN REGISTERED PLAN M-36.

LLOYD & PURCELL
 A DIVISION OF SCHAEFFER DZALDOV BENNETT LTD.
 ONTARIO LAND SURVEYORS

1228 GORHAM STREET, UNIT 28, NEWMARKET, ONTARIO, L3Y 8Z1
 (905) 895-6416 Fax (905) 853-5837 E-MAIL: L_p@ontariolandsurveyors.ca
 TOLL FREE 1 (855) 779-6500
 WWW.ONTARIOLANDSURVEYORS.CA

CAD: KWH/BL	PC: RW	JOB: 19-445
CALC: KWH/BL	CHK'D: TMP	FILE: R1-M35-Q-1