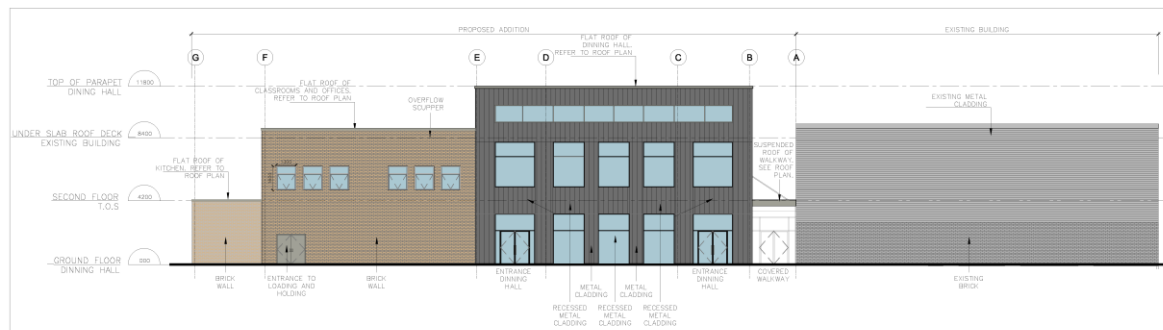
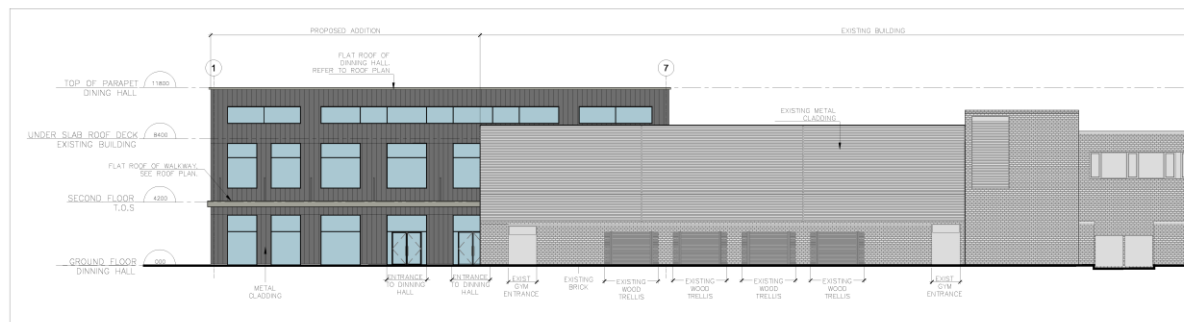


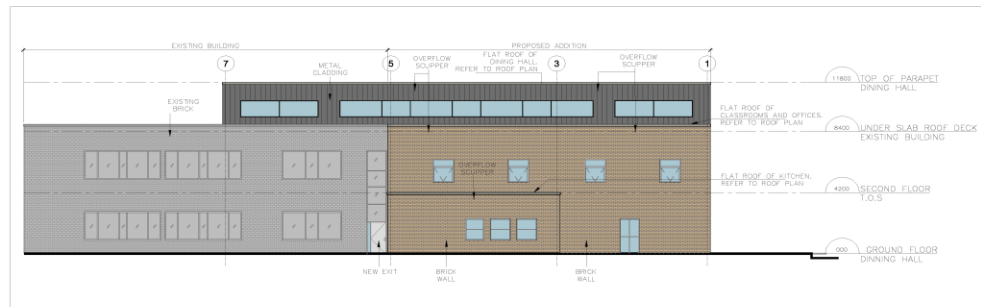
MAP 6 - PROPOSED ELEVATIONS



1 NORTH ELEVATION
A301 1/100



2 WEST ELEVATION

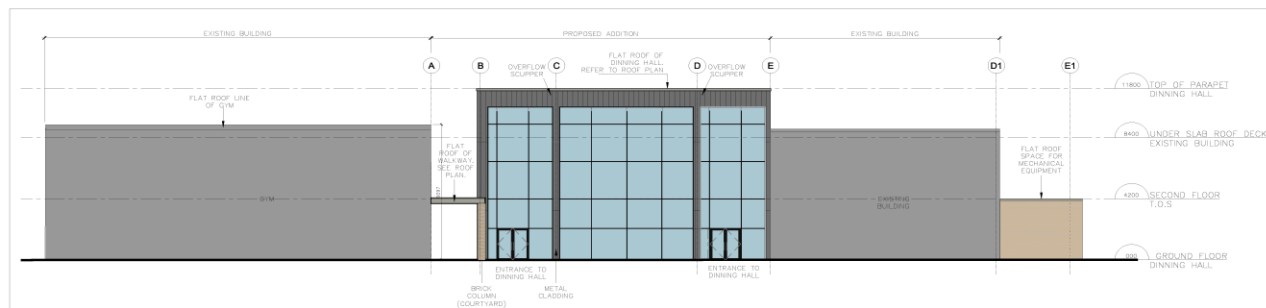


1 EAST ELEVATION
A302 1/100

GLAZING TO WALL RATIO TABLE

ELEVATION	GROSS WALL AREA	GROSS GLAZING AREA	WALL TO GLAZING RATIO
South Elevation	237.15 M2	173.89 M2	73.33%
East Elevation	266.99 M2	46.00 M2	17.23%
West Elevation	239.91 M2	100.03 M2	41.69%
North Elevation	361.65 M2	71.66 M2	19.81%

3 GLAZING AREA RATIO
A302 AN



2 SOUTH ELEVATION
A302 1/100

KG/SS SRPRS.20.005

Block 15 File No.D06-19048

**CITY OF RICHMOND HILL
PLANNING AND REGULATORY
SERVICES DEPARTMENT**