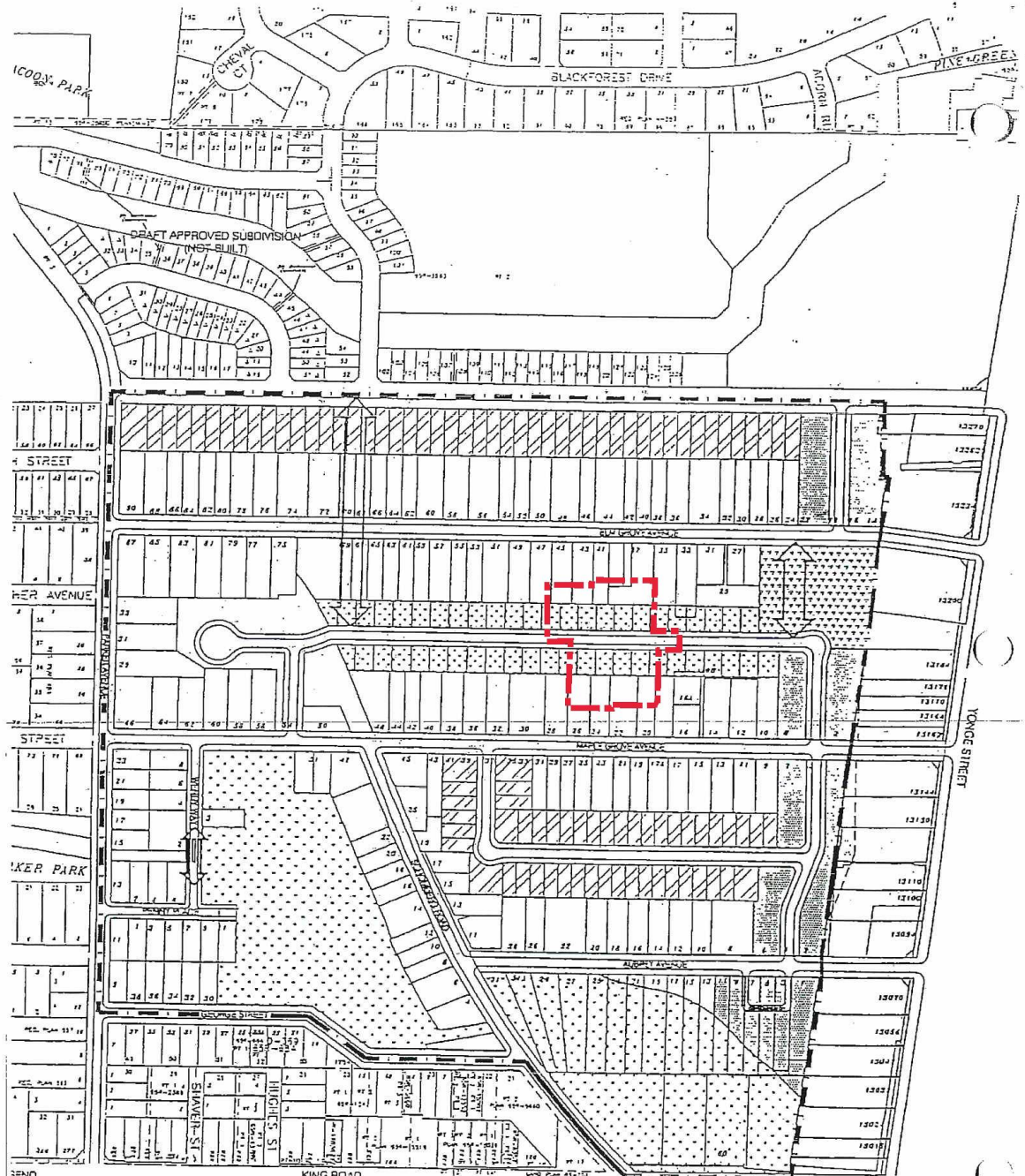
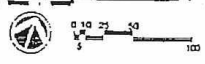


MAP 8 - Elm Grove / Maple Grove / Aubrey Avenue Residential Infill Study



- 1 000 STUDY AREA
- 2 000 PROPOSED PARK
- 3 000 PROPOSED INFILL SINGLE FAMILY RESIDENTIAL 45 LOTS
- 4 000 PROPOSED INFILL SINGLE FAMILY RESIDENTIAL 60 WIDE SHALLOW LOTS
- 5 000 PROPOSED MEDIUM DENSITY RESIDENTIAL INFILL
- 6 000 CONSERVATION LAND

OPA 129
 Town of Richmond Hill
 ELM GROVE/ MAPLE GROVE/ AUBREY RESIDENTIAL INFILL STUDY
 000032
UD+D
UNINCORPORATED



BLOCK 01

**File Nos. D02-20003
D03-20001**



Subject Lands

PL/SS SRPRS.20.067

**CITY OF RICHMOND HILL
PLANNING AND REGULATORY
SERVICES DEPARTMENT**