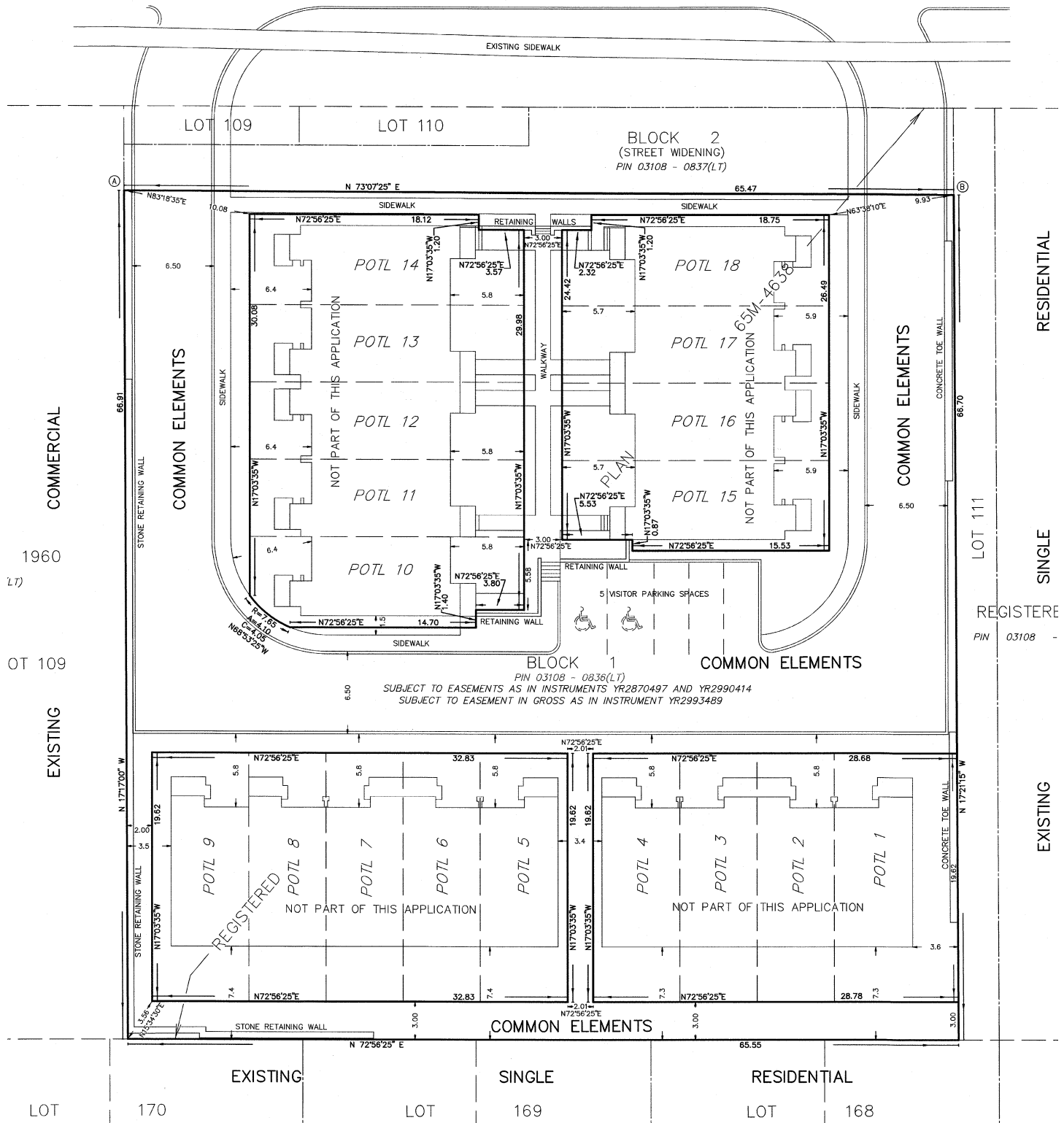


# MAP 5 - DRAFT PLAN OF CONDOMINIUM (19CDM(R)-16010)

CARRVILLE ROAD - REGION ROAD No. 73 (36.5m WIDE)  
 (NAMING BY BY-LAW No.R670-(a)-81-131, INST. No.286362)  
 (ROAD ALLOWANCE BETWEEN LOTS 40 AND 41, CONCESSION 1, WEST OF YONGE STREET)



**BLOCK No.25 File No. D05-16010**

**TOWN OF RICHMOND HILL  
 PLANNING AND REGULATORY  
 SERVICES DEPARTMENT**

**SF/SS SRPRS.20.078**