

## The Corporation of the City of Richmond Hill

### By-law \*\*-21

A By-law to Amend By-law 2325-68, as amended, of the former Township of Markham  
and By-law 55-15, as amended, of The Corporation of the City of Richmond Hill

Whereas the Council of The Corporation of the City of Richmond Hill (the "Corporation")  
at its Meeting of ....., ....., directed that this by-law be brought forward to Council for its  
consideration;

The Council of The Corporation of the City of Richmond Hill enacts as follows:

1. That By-law 2325-68, as amended, of the former Township of Markham ("By-law 2325-68"), be and hereby is further amended by:
  - a) removing those lands shown on Schedule "A" to this By-law \*\*-21 (the "Lands") and any provisions of By-law 2325-68, as amended, that previously applied to the Lands shall no longer apply to the Lands.
2. That By-law 55-15, as amended, of The Corporation of the City of Richmond Hill ("By-law 55-15") be and hereby is further amended as follows:
  - a) by expanding the area of By-law 55-15 to include the Lands;
  - b) by rezoning the Lands to "Residential Wide Shallow Two (RWS2) Zone", "Park (P) Zone", "Environmental Protection Two (EPA2) Zone" and "Open Space (O) Zone" as shown on Schedule "A" to this By-law \*\*-21; and,
  - c) by adding the following to Section 7 – Exceptions

"7.56

Notwithstanding any inconsistent or conflicting provisions of By-law 55-15, as amended, the following special provisions shall apply to the lands zoned "Residential Wide Shallow Two (RWS2) Zone" and more particularly shown as "RWS2" on Schedule "A" to By-law \*\*-21 and denoted by a bracketed number (7.56):

- i) The amendments to By-law 55-15 set out in Exception 7.3 (enacted through By-law 82-16) shall also apply to the lands zoned "Residential Wide Shallow Two (RWS2) Zone" as shown of Schedule "A" to By-law \*\*-21; and,
- ii) No permanent **Building or Structure**, except for **Accessory Structures and Decks**, shall be located within 7.0 metres from the TransCanada Pipelines Right of Way. **Accessory Structures and Decks**, shall have a minimum **Setback** of 3.0 metres from the TransCanada Pipelines Right of Way.

7.57

Notwithstanding any inconsistent or conflicting provisions of By-law 55-15, as amended, the following special provisions shall apply to the lands zoned "Residential Wide Shallow Two (RWS2) Zone" and more particularly shown as "RWS2" on Schedule "A" to By-law \*\*-21 and denoted by a bracketed number (7.57):

- i) Notwithstanding Sections 5.1.6 a) and b), detached **accessory buildings and structures** shall not be located closer to a **front lot**

**line** than the minimum distance between the nearest point of the main wall of the main **building** on the **lot** and the **front lot line**."

3. All other provisions of By-law 55-15, as amended, not inconsistent with the foregoing, shall continue to apply to the lands shown on Schedule "A" attached hereto.
4. The imperial measurements found in this by-law in brackets are provided for information purposes only and are intended to be an approximate conversion of the metric measurements. The metric or SI measurements shall be deemed to be the standards established by this by-law and, wherever there is a variance between the metric or SI measurements and the imperial measurements, the metric or SI measurement shall apply.
5. Schedule "A" attached to By-law \*\*-21 is declared to form a part of this by-law.

Passed this            day of , 20\*\*.

---

Joe DiPaola  
Acting Mayor

---

Stephen M.A. Huycke  
City Clerk

File: D02-17015 (JH)

DRAFT

# **The Corporation of the City of Richmond Hill**

## **Explanatory Note to By-law \*\*-21**

By-law \*\*-21 affects the lands described as Part of Lot 30, Concession 2, E.Y.S, municipally known as 11430 Leslie Street.

By-law 2325-68, as amended, of the former Township of Markham, zones the subject lands "Agricultural (A1) Zone."

By-law \*\*-21 will have the effect of removing the majority of the lands from the provisions of By-law 2325-68, as amended, and rezoning the subject lands to "Residential Wide Shallow Two (RWS2) Zone", "Park (P) Zone", "Environmental Protection Two (EPA2) Zone" and "Open Space (O) Zone" under By-law 55-15, as amended. By-law \*\*-21 also contains a number of site-specific provisions to permit a residential development comprised of 36 single detached dwellings, in addition to blocks for a park, open space, stormwater management and road purposes on the subject lands.

DRAFT

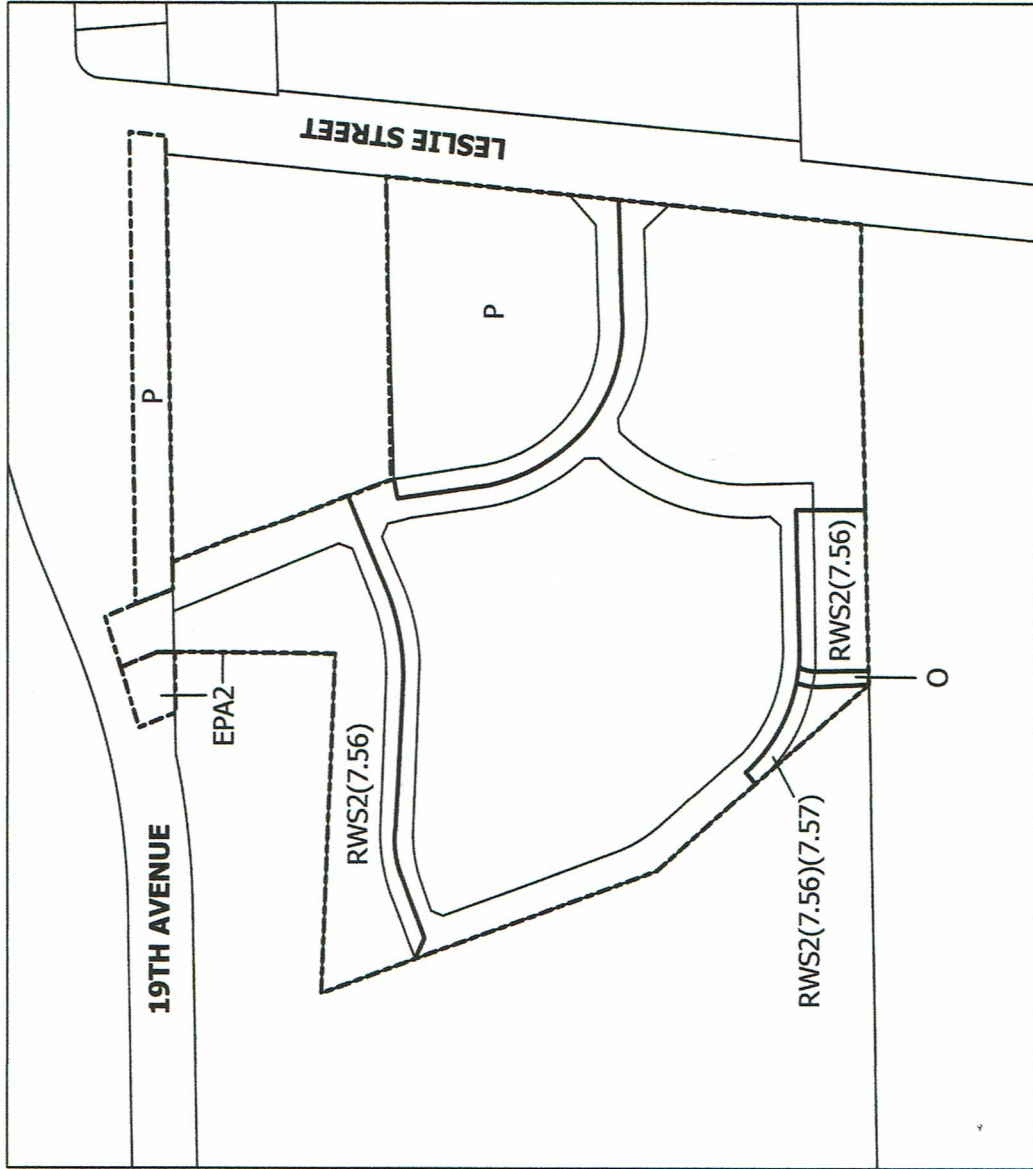


# **SCHEDULE "A"** **TO BY-LAW NO. \_\_-21**

This is Schedule "A" to By-Law  
 \_\_-21 passed by the Council  
 of the Corporation of the  
 City of Richmond Hill on the  
 \_\_th day of \_\_, 2021.

Mayor

City Clerk



Subject Lands