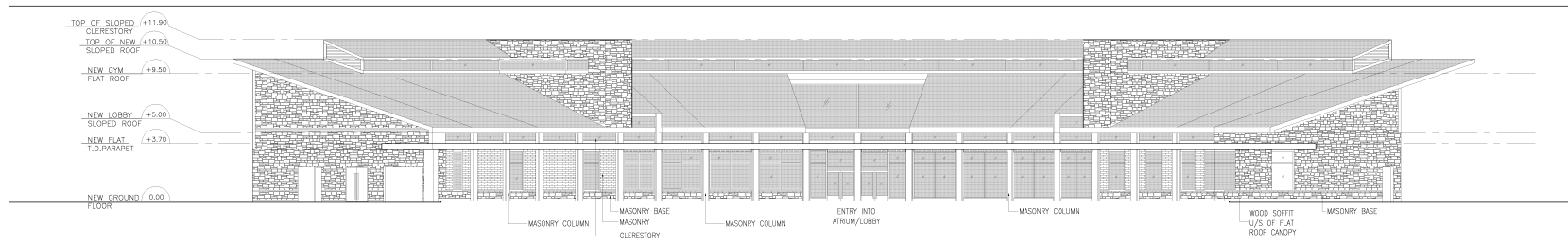
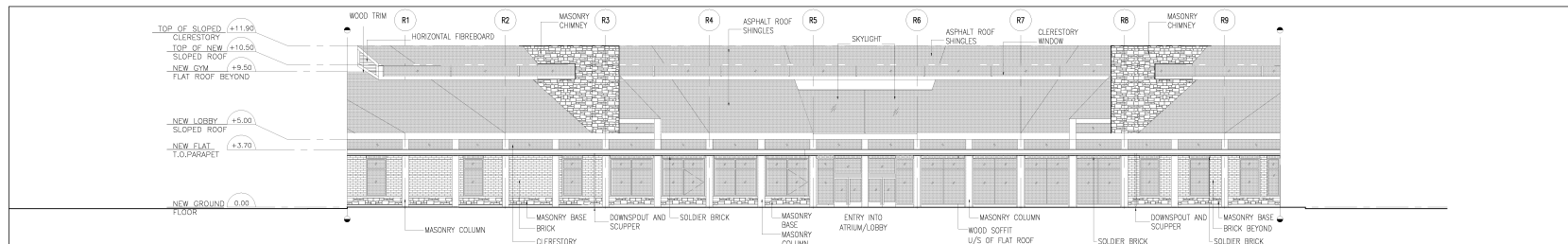


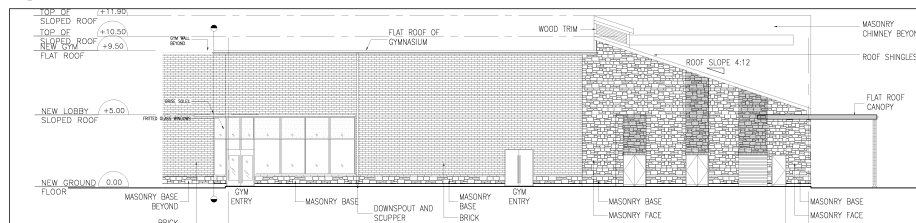
MAP 6 - PROPOSED ELEVATIONS



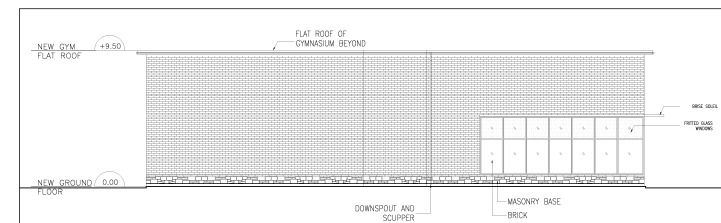
8 NORTHWEST MAIN BUILDING ELEVATION
A500 1:150



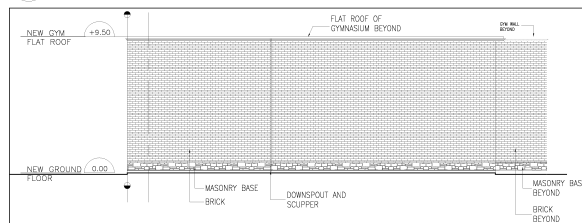
7 NORTHWEST MAIN BUILDING FLAT ELEVATION
A500 1:150



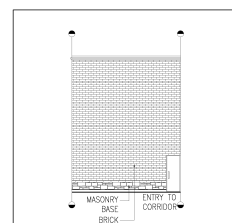
6 NORTH MAIN BUILDING AND GYMNASIUM ELEVATION
A500 1:150



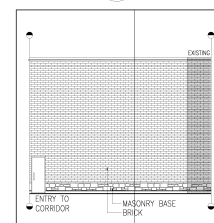
5 EAST GYMNASIUM ELEVATION
A500 1:150



4 SOUTH GYMNASIUM ELEVATION
A500 1:150



3 EAST ELEVATOR ROOM ELEVATION
A500 1:150



2 WEST STAIRWELL ELEVATION
A500 1:150

NOTES	GLAZED TO WALL RATIO TABLE		
ELEVATION	GROSS WALL AREA	GROSS GLAZING AREA	WALL TO GLAZING RATIO
NORTHWEST MAIN BUILDING	245.00m ²	138.80m ²	40.23%
NORTH MAIN BUILDING AND GYMNASIUM ELEVATION	244.83m ²	39.59m ²	16.20%
EAST GYMNASIUM ELEVATION	350.00m ²	47.18m ²	14.30%
SOUTH GYMNASIUM ELEVATION	278.20m ²	9.00m ²	0.00%
SOUTHEAST MAIN BUILDING ELEVATION	635.87m ²	204.29m ²	34.95%
EAST LINK ELEVATION	89.80m ²	14.33m ²	20.62%
WEST MAIN BUILDING AND LINK ELEVATION	271m ²	58.64m ²	58.64m ²
EAST ELEVATOR ROOM ELEVATION	72.18m ²	0.00m ²	0.00%
WEST STAIRWELL ELEVATION	120.53m ²	0.00m ²	0.00%

1 GLAZING TO WALL RATIO TABLE
A500 N/A

Block 27 File No. D06-17083

**Town of Richmond Hill
Planning and Regulatory
Services Department**