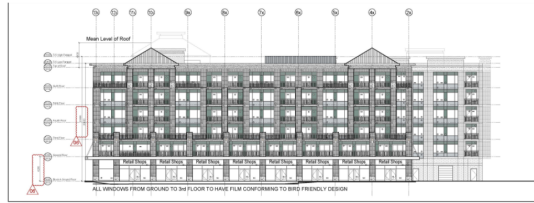


MAP 6 - PROPOSED ELEVATIONS



1 East Elevation - Yonge Street Elevation
Scale: 1/8" = 1'-0"



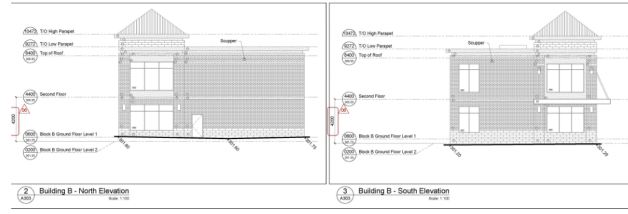
2 West Elevation
Scale: 1/8" = 1'-0"



3 South Elevation
Scale: 1/8" = 1'-0"



1 Building B - East Elevation
Scale: 1/8" = 1'-0"



2 Building B - North Elevation
Scale: 1/8" = 1'-0"

3 Building B - South Elevation
Scale: 1/8" = 1'-0"



4 Building B - West Elevation
Scale: 1/8" = 1'-0"



1 North Elevation
Scale: 1/8" = 1'-0"



2 Interior Elevation - West
Scale: 1/8" = 1'-0"



3 Interior Elevation - East
Scale: 1/8" = 1'-0"

12050 Yonge Street

AD/SW SRPI.21.034

BLOCK 09 File Nos. D06-12089

CITY OF RICHMOND HILL
PLANNING AND INFRASTRUCTURE
DEPARTMENT