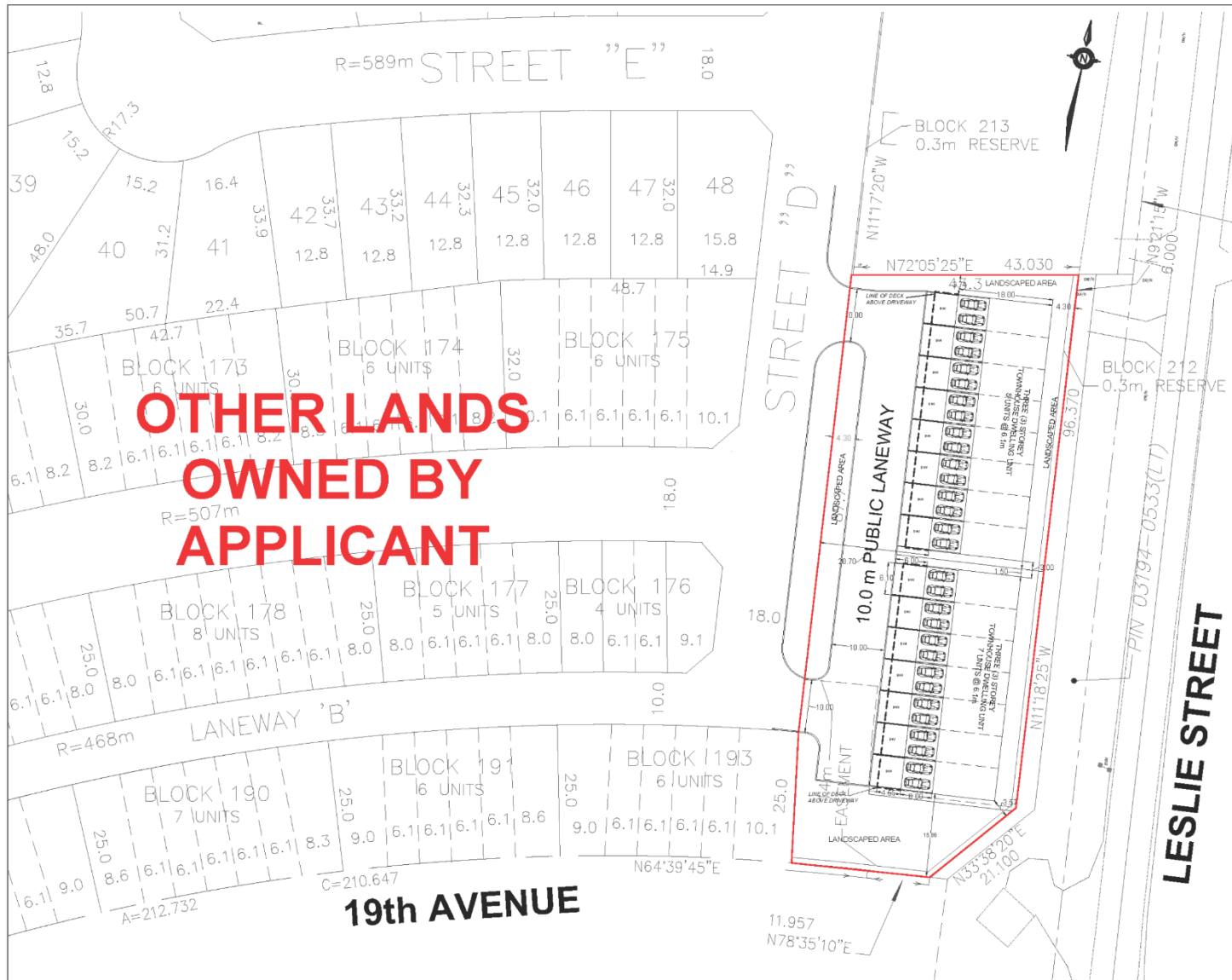


MAP 7 - FIRST SUBMISSION CONCEPTUAL SITE PLAN (BLOCK 200)



Subject Lands

11546 Leslie Street Block 200

LP/WW SRPI.21.081

BLOCK 11 File Nos. D01-18005

CITY OF RICHMOND HILL
PLANNING AND INFRASTRUCTURE
DEPARTMENT