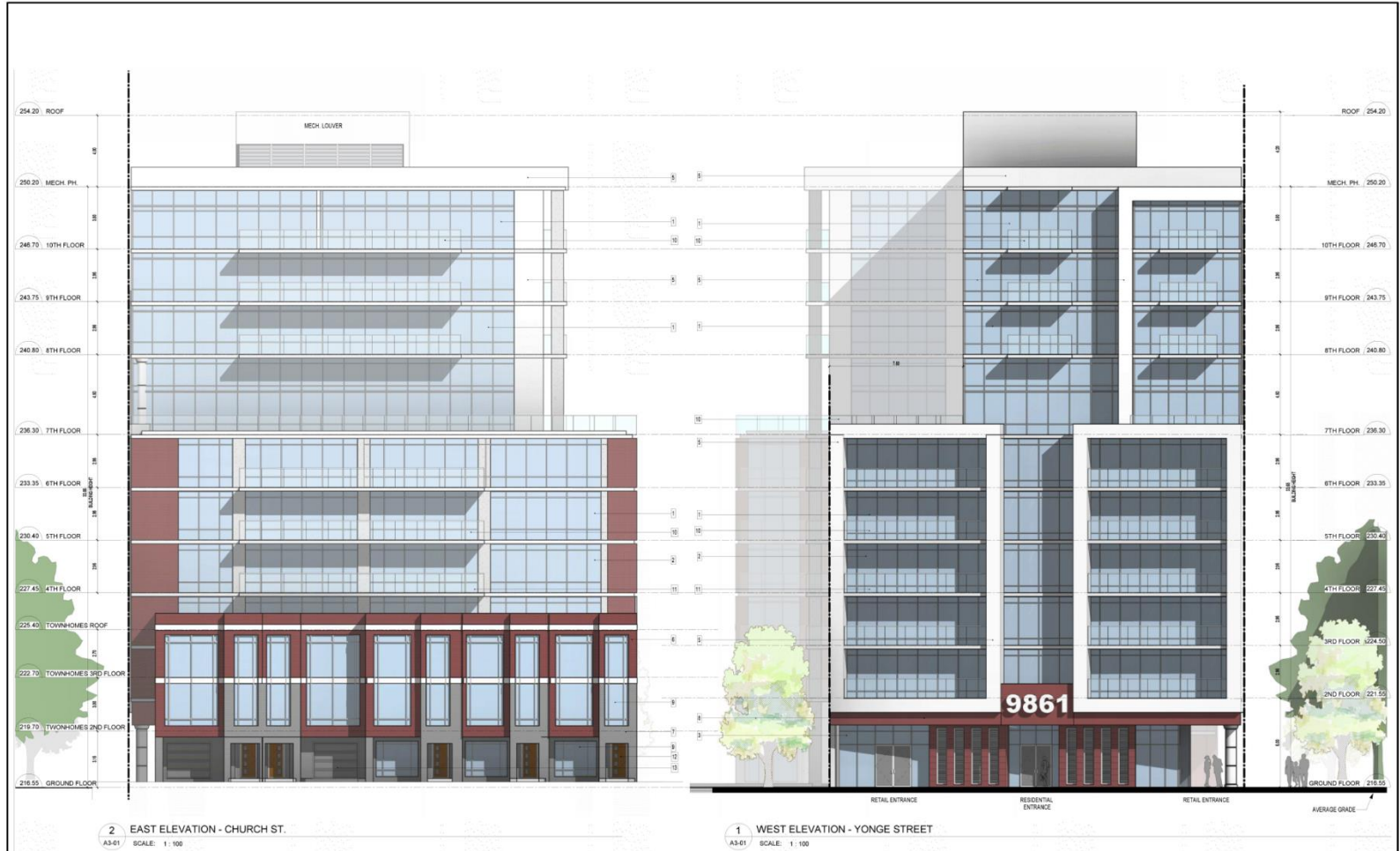


MAP 7 - PROPOSED WEST AND EAST ELEVATIONS



9861 Yonge Street and 236 and 240 Church Street South

BLOCK 23 File Nos. D01-12011 and D02-12032

KF/GD SRPI.21.085

CITY OF RICHMOND HILL
 PLANNING AND INFRASTRUCTURE
 DEPARTMENT