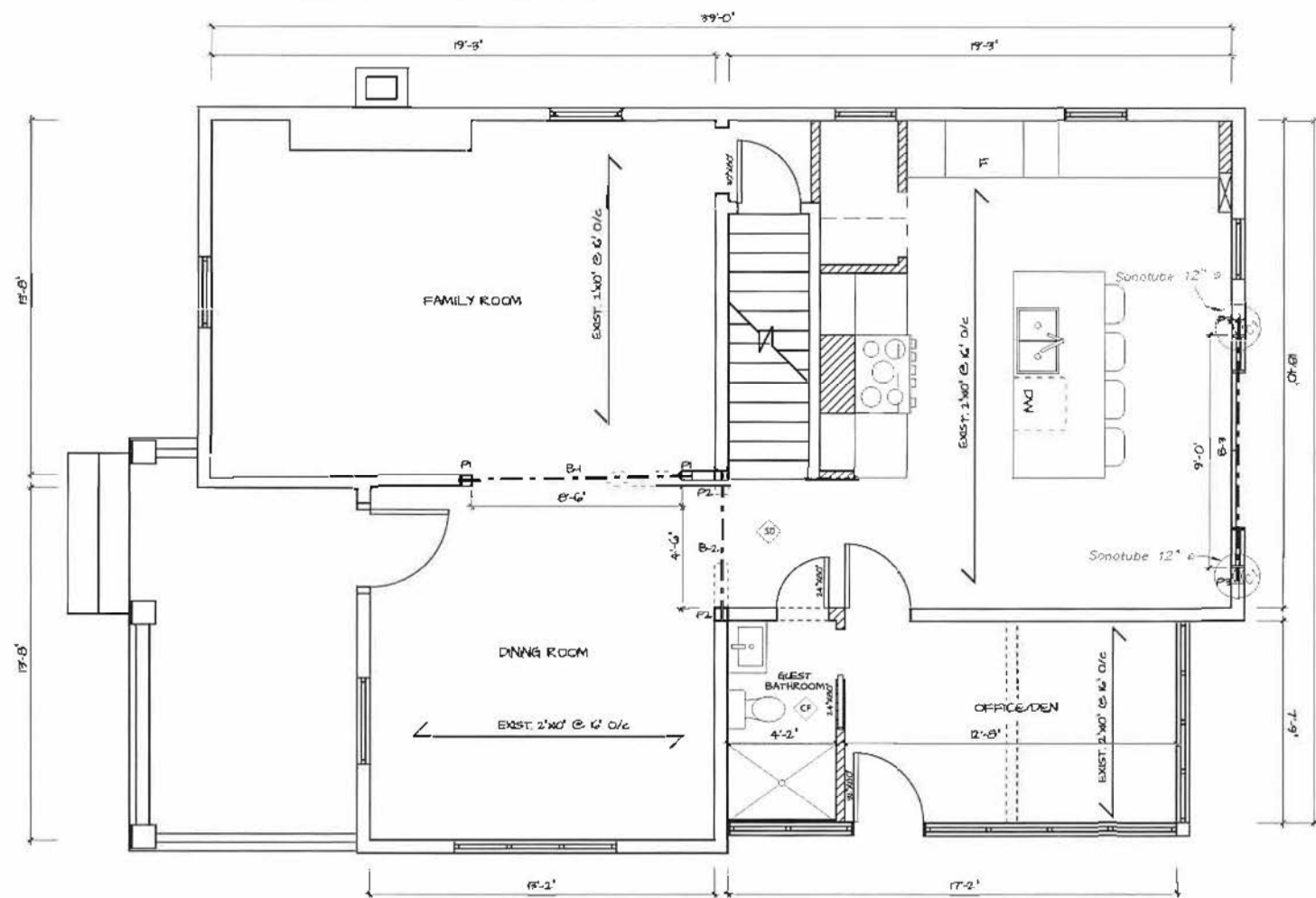
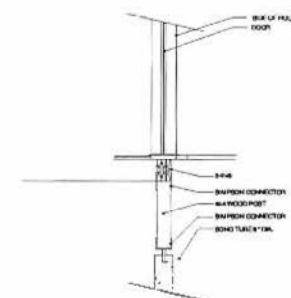


Revert back to original exterior opening at rear of the house, 9' W x 7'6 H and insert a large French door. Door to be constructed as fixed panel, french door, fixed panel with interior grates. Exterior black, Interior white in colour (Heritage approved colors). Aluminum or Vinyl. The existing exterior siding will not be affected as we are reverting back to the original opening. We feel this will benefit the look of the house from both inside and outside and will still similar heritage properties of the existing back door.



EXT EXTERIOR WALLS = 8"
 INTERIOR WALLS = 4"
LEGEND
 EXISTING =
 TO BE REMOVED =
 PROPOSED =
 TO BE CONSTRUCTED OF 12" CMU
 STUDS WITH 1/2" MIN WALL THICKNESS
 SMOKE, CO2, STROBE COMBO DETECTOR =
 CEILING FAN =

B-1 - DROPPED BEAM - 2 PILES OF 2"x12"
 P-1 - POST - 3 - 2"x4"
 B-2 - DROPPED BEAM - 2 PILES OF 2"x8"
 P-2 - POST - 2 - 2"x4"
 B-3 - DROPPED BEAM - 3 - PILES OF 2"x12"
 P-3 - POST - 3 - 2"x4"



GROUND FLOOR
 PROPOSED



53 ARNOLD CRESCENT, RICHMOND HILL

SCALE: 1/4" = 1'-0"
 DATE: AUG 10, 2021

APPROVED BY:

DRAWN BY:

REVISED:

GROUND FLOOR - PROPOSED

DRAWING NUMBER
 3 OF 5





