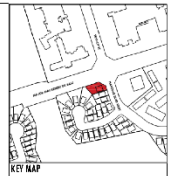
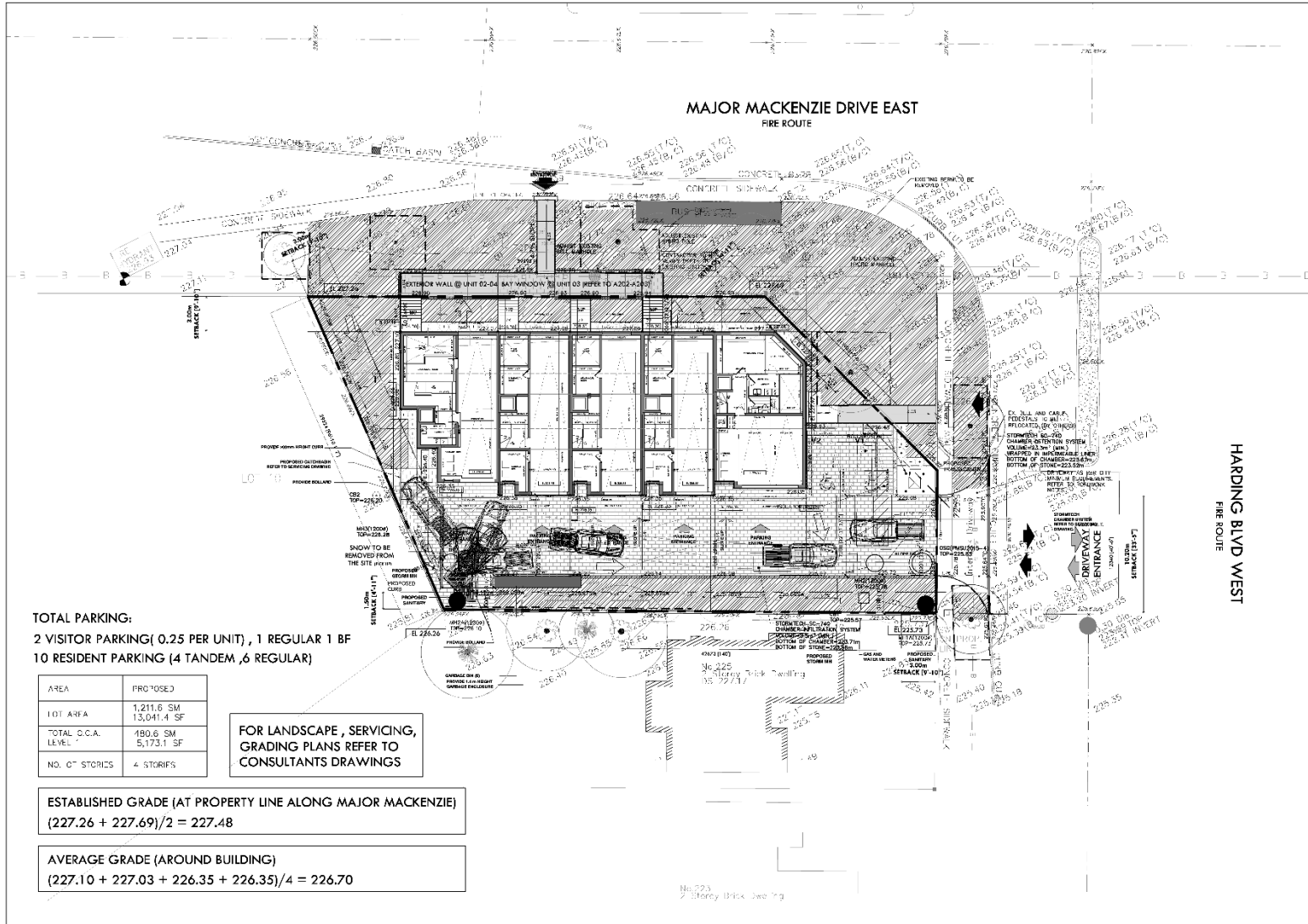


MAP 4 - PROPOSED SITE PLAN



NOTE: THE PLAN IS TO BE IN CONFORMITY WITH TOWN'S URBAN DESIGN GUIDELINES

TOTAL PARKING:
 2 VISITOR PARKING (0.25 PER UNIT), 1 REGULAR 1 BF
 10 RESIDENT PARKING (4 TANDEM, 6 REGULAR)

AREA	PROPOSED
TOT. AREA	1,211.6 SM 13,041.4 SF
TOTAL O.C.A. LEVEL	190.6 SM 5,173.1 SF
NO. OF STORIES	4 STORIES

FOR LANDSCAPE, SERVICING, GRADING PLANS REFER TO CONSULTANTS DRAWINGS

ESTABLISHED GRADE (AT PROPERTY LINE ALONG MAJOR MACKENZIE)
 $(227.26 + 227.69) / 2 = 227.48$

AVERAGE GRADE (AROUND BUILDING)
 $(227.10 + 227.03 + 226.35 + 226.35) / 4 = 226.70$

NO.	REVISION	DATE

A& Architects
 A & Architects Inc.
 25 Queen Street East, Suite 300, Toronto, Ontario, M5H 1S7
 (416) 593-8888
 WWW.ARCHITECTS.CO

227 Harding Blvd. W.
 Richmond Hill, Ontario



Scale: 1:150
 Date: NOVEMBER 2017

SITE PLAN
 Project No: 17-108 Drawing No: A102

227 Harding Boulevard West

BLOCK 24 File Nos. D02-18008

SF/WW SRPI.21.122

CITY OF RICHMOND HILL
 PLANNING AND INFRASTRUCTURE
 DEPARTMENT