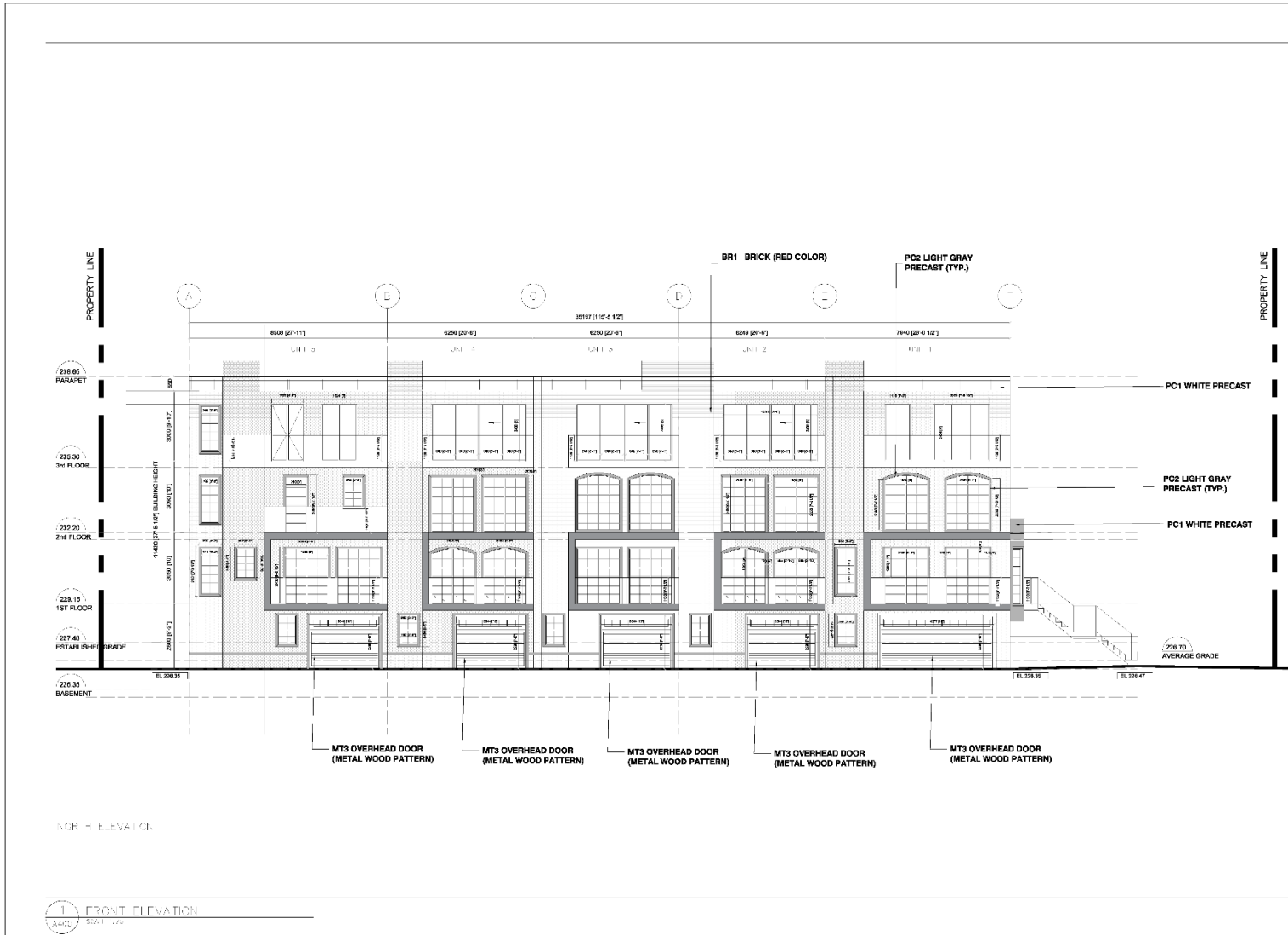


# MAP 7 - PROPOSED SOUTH BUILDING ELEVATIONS



NOTE: FACADE MATERIALS AND LIGHTING LOCATION AS LABELED IN THE ELEVATION DRAWINGS

No.	REVISION	DATE
01	ISSUED FOR REVIEW ARCHITECT & SPA	2017-03-07
02	ISSUED FOR REVIEW ARCHITECT & SPA	2017-04-18
03	ISSUED FOR REVIEW ARCHITECT & SPA	2017-05-11

**A& Architects**  
 A & Architects Inc.  
 170 Beaver Creek Road, Suite 103A, Toronto, Ontario, M9W 6P6  
 (416) 291-8800  
 WWW.AANDARCHITECTS.COM

227 Harding Blvd. W.  
**227 Harding Blvd. W.**  
 Richmond Hill, Ontario



Drawn: SR Scale: 1/75  
 Checked: AL Date: NOVEMBER 2017

Title: **REAR ELEVATION**  
 Project No: 17-108 Drawing No: **A402**

227 Harding Boulevard West

SF/WW SRPI.21.122

BLOCK 24 File Nos. D02-18008

**CITY OF RICHMOND HILL  
 PLANNING AND INFRASTRUCTURE  
 DEPARTMENT**