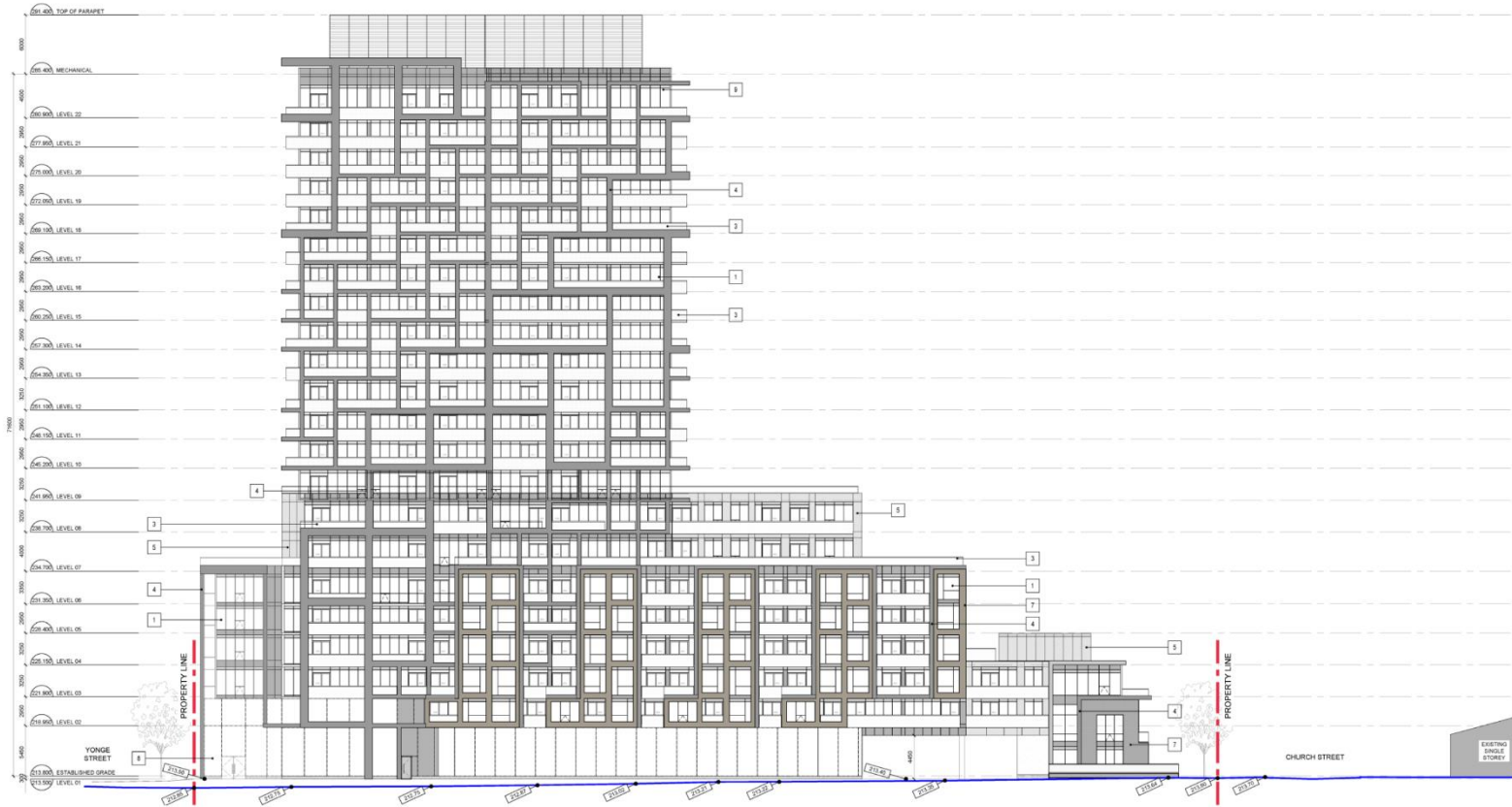


MAP 6 - PROPOSED SOUTH ELEVATION



9825 and 9839 Yonge Street,
254, 258 and 264 Church Street,
11 and 17 Harding Boulevard

KF/VC SRPI.21.058

BLOCK 23 File Nos. D06-20045

CITY OF RICHMOND HILL
PLANNING AND INFRASTRUCTURE
DEPARTMENT