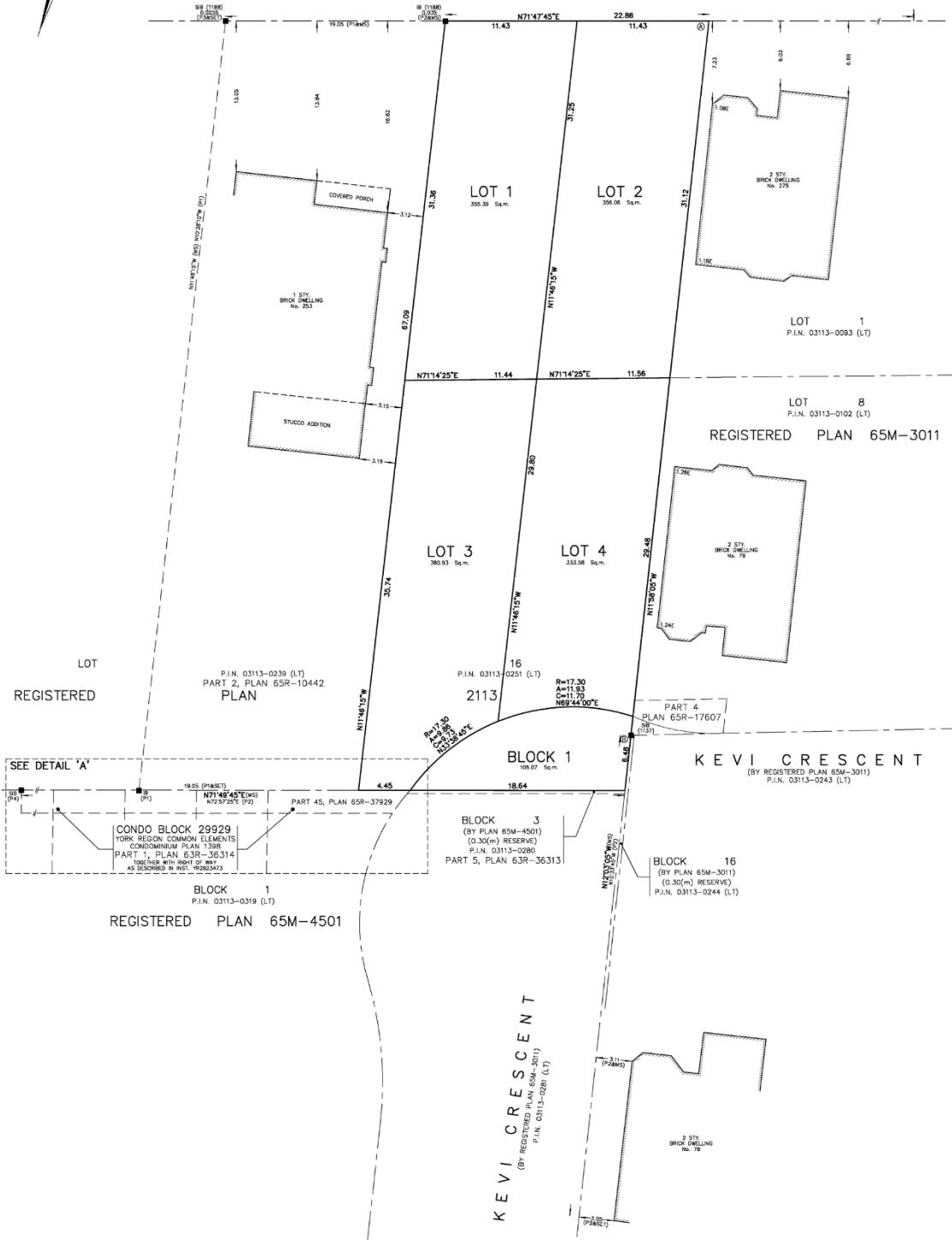


MAP 5 - PROPOSED DRAFT PLAN OF SUBDIVISION



16TH AVENUE
ROAD ALLOWANCE BETWEEN LOTS 15 AND 16, CONCESSION 2
P.I.N. 03113-0257 (LT)
PART 1, PLAN 65R-17669



271 Old 16th Avenue

KG/RG SRPI.22.005

BLOCK 27 File Nos. D02-21017 and SUB-21-0004 (D03-21004)

CITY OF RICHMOND HILL
PLANNING AND INFRASTRUCTURE
DEPARTMENT