

MAP 10 - PROPOSED FRONT ELEVATIONS - BUILDING BLOCKS 4 TO 8

MATERIAL LEGEND

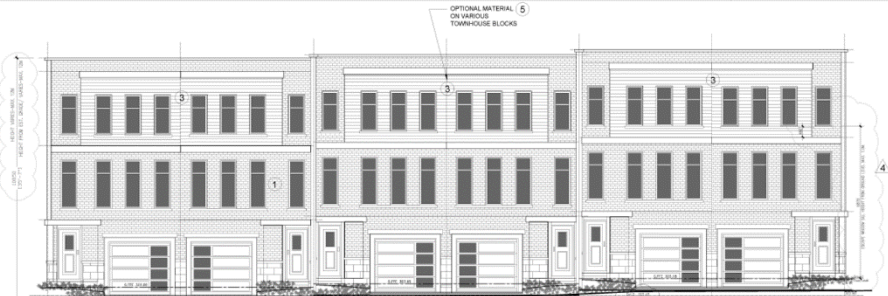
- 1-BRICK MASONRY
- 2-PRECAST STONE
- 3-HARDBOARD SIDING
- 4-EIFS/ STUCCO
- 5-CEDAR LONGBOARD
- 6-ALUMINUM PANEL
- 7-CONCRETE



5 Front Elevation - 6 Unit\_ Building Block # 7  
West Elevation  
SCALE: N.T.S.



4 Front Elevation - 4 Unit\_ Building Block # 8  
West Elevation  
SCALE: N.T.S.



3 Front Elevation - 6 Unit\_ Building Block # 6 ( Centre Block)  
East Elevation  
SCALE: N.T.S.



2 Front Elevation - 5 Unit\_ Building Block # 5  
East Elevation  
SCALE: N.T.S.



1 Front Elevation - 4 Unit\_ Building Block # 4  
East Elevation  
SCALE: N.T.S.

25, 45, and 61 Harris Avenue

BLOCK 09 File Nos. D02-17014 and D03-17004

LP/VC SRPI.22.039

CITY OF RICHMOND HILL  
PLANNING AND INFRASTRUCTURE  
DEPARTMENT