

MAP 11 - PROPOSED ELEVATIONS - BUILDING BLOCK SIDE AND REAR ELEVATIONS

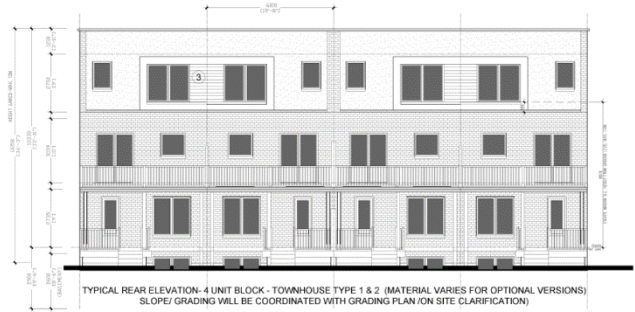


5 Upgraded Rear Elevation- 6Unit Building Block # 6
A303 SCALE: 1:100 Centre Block Unit / West Elevation

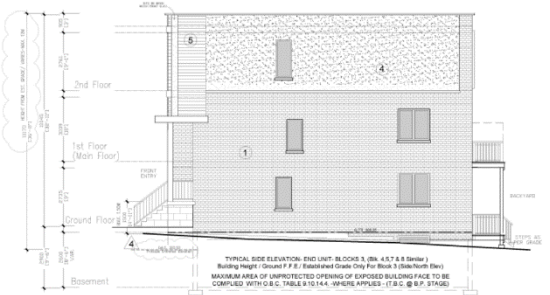
REAR ELEVATIONS OF CENTRE BLOCK UNITS WILL BE UPGRADED TO MATCH FRONT ELEVATION AS PER COMPLIANCE WITH URBAN DESIGN GUIDELINES TO PROVIDE FRIENDLY REAR ELEVATIONS (EQUAL FRONTAGE BLOCKS) FOR CENTRE BLOCK UNITS.



6 Typical Side Elevation-Centre Block Units
A303 SCALE: 1:100 Centre Blk TH End Units-V4

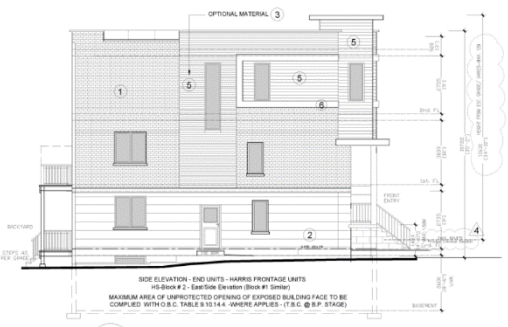


4 Typical Rear Elevation- 4Unit TH Building Block
A303 SCALE: 1:100 (5, 6, 7 & 8 Unit Bldg. Blocks Similar)

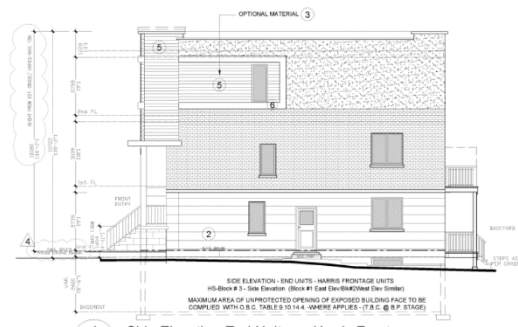


3 Typical Side Elevation-Internal Units
A303 SCALE: 1:100 Typical TH End Units-V1

- MATERIAL LEGEND
- 1-BRICK MASONRY
 - 2-PRECAST STONE
 - 3-HORIZONTAL SIDING
 - 4-5/8\" STUCCO
 - 5-CEGAR LONGBOARD
 - 6-ALUMINUM PANEL
 - 7-CONCRETE



2 Side Elevation- Site Entry / End Units
A303 SCALE: 1:100 Harris Ave TH - End Unit-V3



1 Side Elevation-End Units on Harris Frontage
A303 SCALE: 1:100 Harris Ave TH - End Unit-V2

25, 45, and 61 Harris Avenue

BLOCK 09 File Nos. D02-17014 and D03-17004

LP/VC SRPI.22.039

CITY OF RICHMOND HILL
PLANNING AND INFRASTRUCTURE
DEPARTMENT