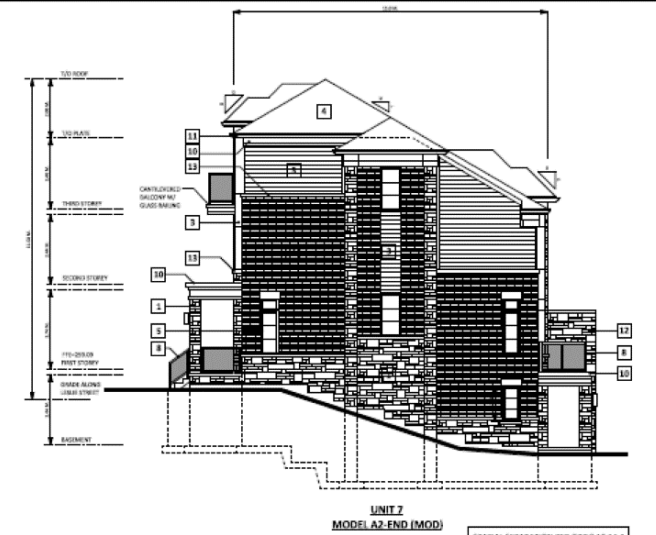


MAP 11 - BUILDING 2 BLOCK ELEVATIONS



BUILDING 2 - EAST (FRONT) ELEVATION (ELEV. 'A' - FACING LESLIE STREET)

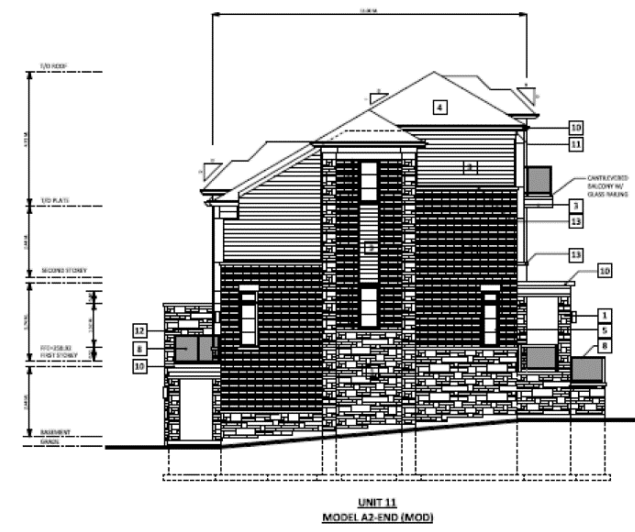


BUILDING 2 - NORTH (RIGHT) ELEVATION

SPATIAL SEPARATION PER OBC 9.10.14.4	
OVERLAP LENGTH AREA:	100% 0%
AREA OF OPENINGS:	38.0% 62%
% OF OPENINGS ALLOWED:	5.0% N 17.0%
LIMITING DISTANCE:	3.00 M 1.00 M



BUILDING 2 - WEST (REAR) ELEVATION (ELEV. 'A' - FACING LANEWAY)



BUILDING 2 - SOUTH (LEFT) ELEVATION

SPATIAL SEPARATION PER OBC 9.10.14.4	
OVERLAP LENGTH AREA:	100% 0%
AREA OF OPENINGS:	60.0% 40%
% OF OPENINGS ALLOWED:	4.0% N 10.0%
LIMITING DISTANCE:	3.00 M 1.00 M

11580 Leslie Street

LP/VC SRPI.22.081

BLOCK 11 File Nos. D02-18006 and D03-18005

**CITY OF RICHMOND HILL
PLANNING AND INFRASTRUCTURE
DEPARTMENT**