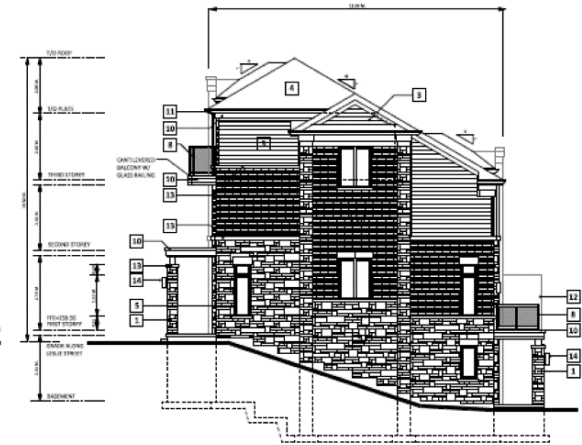


MAP 10 - BUILDING 1 BLOCK ELEVATIONS



UNIT 6 MODEL A2-END UNIT 5 MODEL A1 UNIT 4 MODEL A2 UNIT 3 MODEL A1 UNIT 2 MODEL A2 UNIT 1 MODEL A1-END

BUILDING 1 - EAST (FRONT) ELEVATION (ELEV. 'B' - FACING LESLIE STREET)



UNIT 5 MODEL A1-END

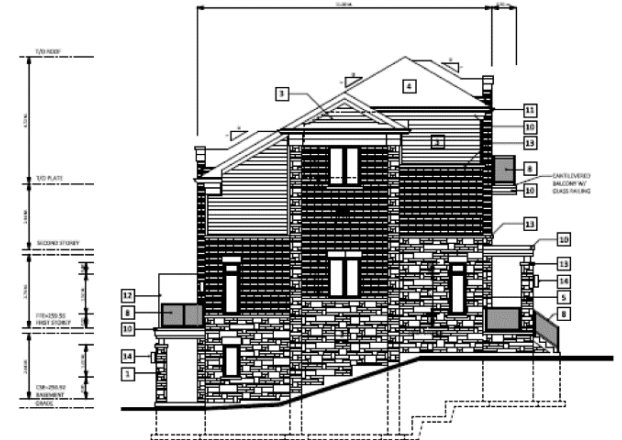
BUILDING 1 - NORTH (RIGHT) ELEVATION

SPATIAL SEPARATION PER CBC 9.10.14.4	
SEPARATED BY COMMON AREA	MINIMUM 1.7
AREA OF SEPARATION	25.00 M ²
NO. OF COMMON AREAS	4/10 & 1/12/16
MINIMUM DISTANCE	1.00 M



UNIT 1 MODEL A1-END UNIT 2 MODEL A2 UNIT 3 MODEL A1 UNIT 4 MODEL A2 UNIT 5 MODEL A1 UNIT 6 MODEL A2-END

BUILDING 1 - WEST (REAR) ELEVATION (ELEV. 'B' - FACING LANEWAY)



UNIT 6 MODEL A2-END

BUILDING 1 - SOUTH (LEFT) ELEVATION

SPATIAL SEPARATION PER CBC 9.10.14.4	
SEPARATED BY COMMON AREA	MINIMUM 1.7
AREA OF SEPARATION	25.00 M ²
NO. OF COMMON AREAS	4/10 & 1/12/16
MINIMUM DISTANCE	1.00 M

11580 Leslie Street

LP/VC SRPI.22.081

BLOCK 11 File Nos. D02-18006 and D03-18005

**CITY OF RICHMOND HILL
PLANNING AND INFRASTRUCTURE
DEPARTMENT**