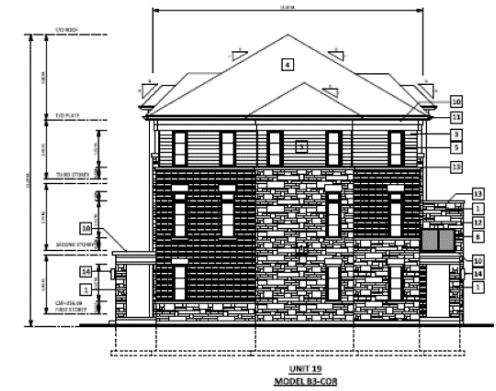


MAP 12 - BUILDING 3 BLOCK ELEVATIONS



BUILDING 3 - WEST (FRONT) ELEVATION (ELEV. 'A' - FACING STREET 'D')



BUILDING 3 - SOUTH (RIGHT) ELEVATION



BUILDING 3 - EAST (REAR) ELEVATION (ELEV. 'A' - FACING LANEWAY)



BUILDING 3 - NORTH (LEFT) ELEVATION

11580 Leslie Street

LP/VC SRPI.22.081

BLOCK 11 File Nos. D02-18006 and D03-18005

CITY OF RICHMOND HILL
PLANNING AND INFRASTRUCTURE
DEPARTMENT