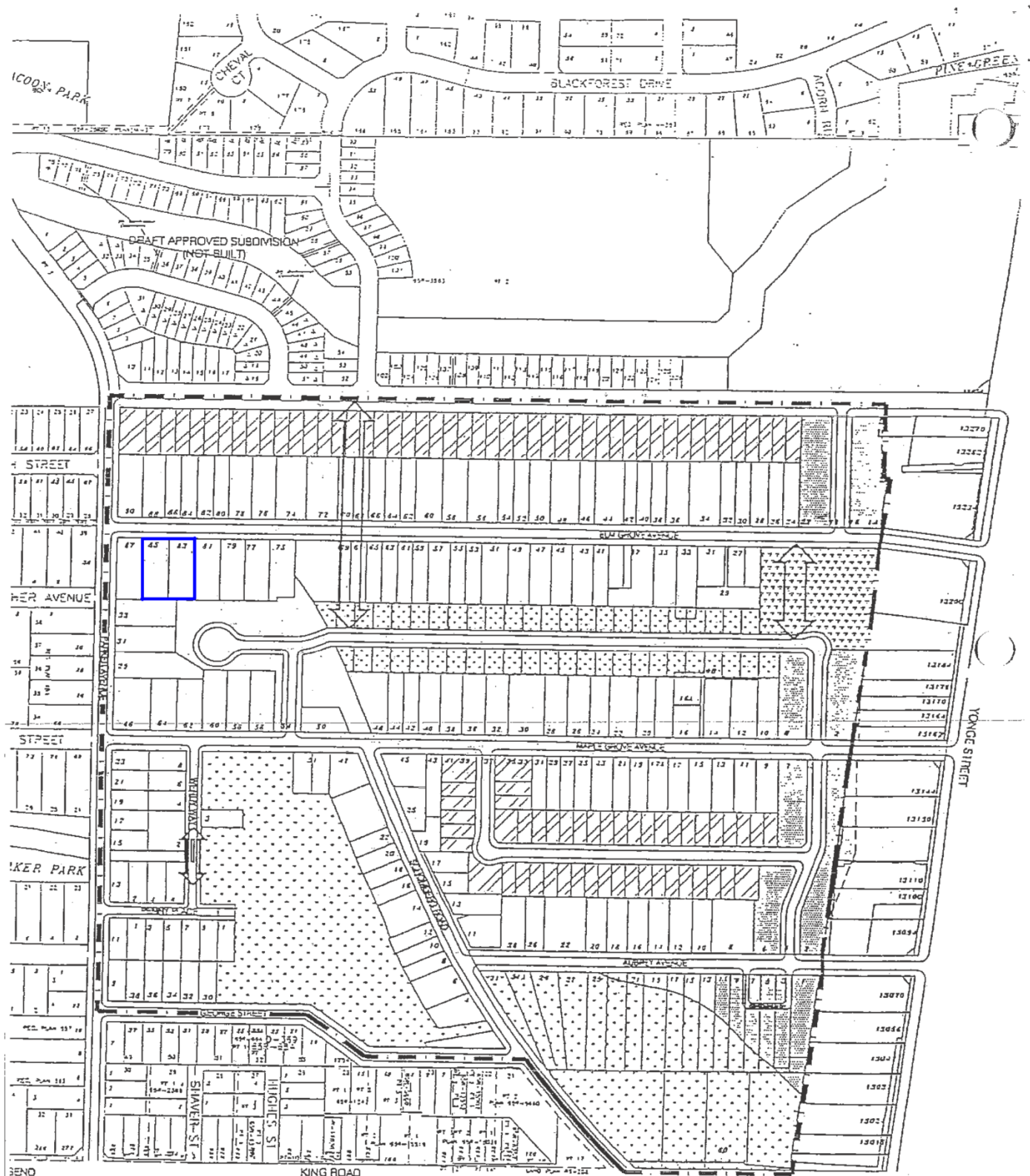
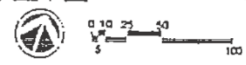


MAP 5 - ELM GROVE/MAPLE GROVE/AUBREY INFILL STUDY



- SEND
- 1000 STUDY AREA
 - PROPOSED PARK
 - PROPOSED INFILL SINGLE FAMILY RESIDENTIAL 45' LOTS
 - PROPOSED INFILL SINGLE FAMILY RESIDENTIAL 60' WIDE SHALLOW LOTS
 - PROPOSED MEDIUM DENSITY RESIDENTIAL INFILL
 - CONSERVATION LAND

Subject Lands



83 and 85 Elm Grove Avenue
GL/DW SRPI.23.010

BLOCK 1 File No. D02-22018

CITY OF RICHMOND HILL
PLANNING AND INFRASTRUCTURE
DEPARTMENT