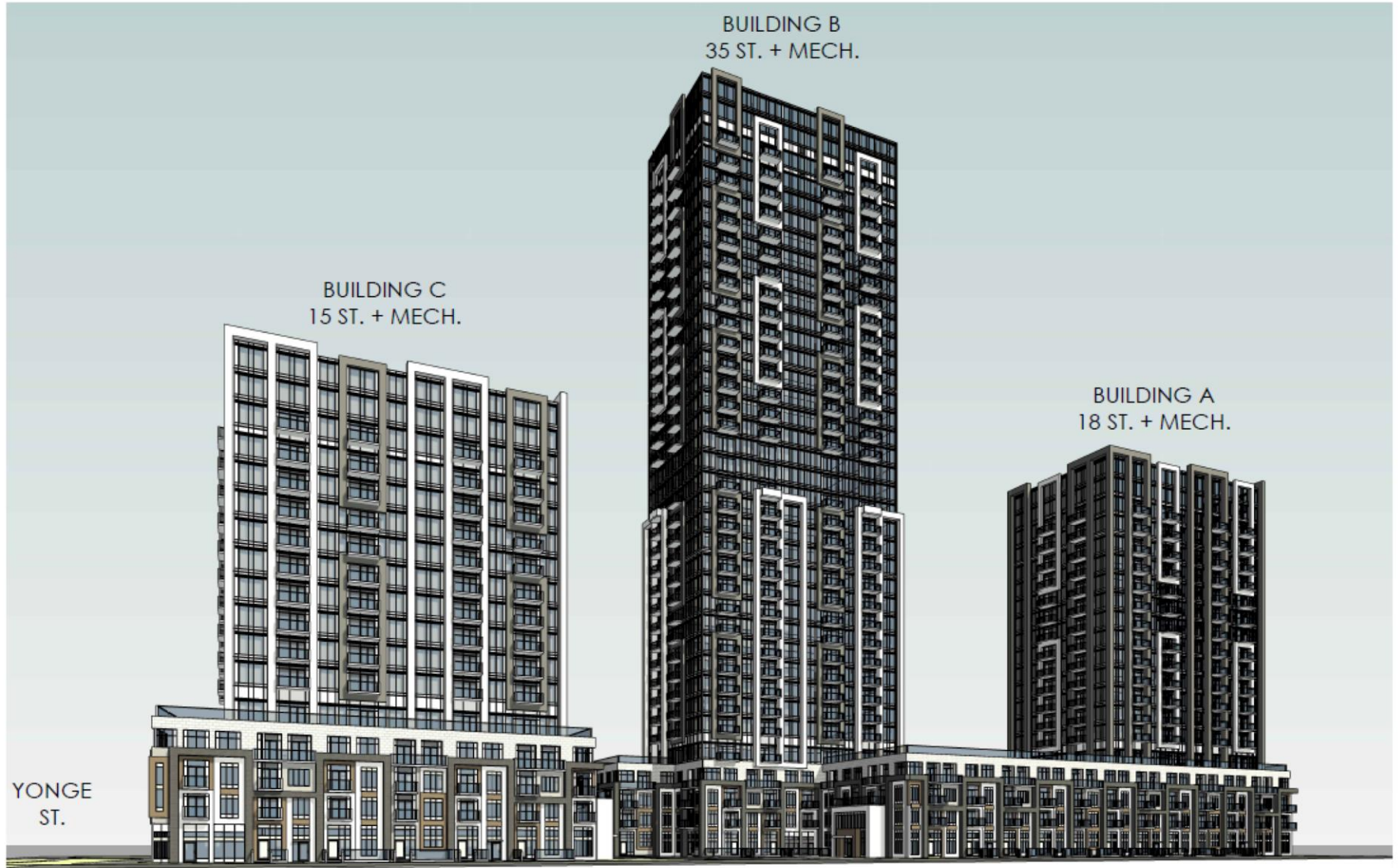


MAP 6 - ORIGINAL 3D RENDERINGS



YONGE
ST.

BUILDING B
35 ST. + MECH.

BUILDING C
15 ST. + MECH.

BUILDING A
18 ST. + MECH.

11160 and 11172 Yonge Street

SF/VC SRPI.23.023

BLOCK 16 File NO. D01-20013 and D02-20025

**CITY OF RICHMOND HILL
PLANNING AND INFRASTRUCTURE
DEPARTMENT**