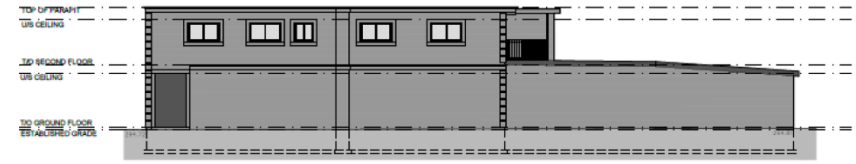
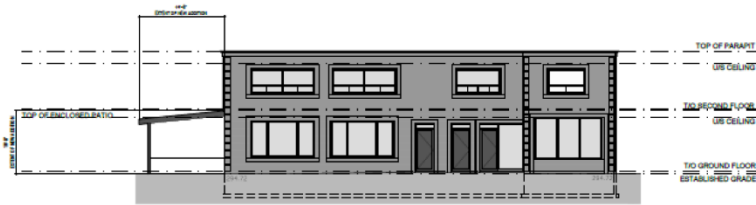


MAP 5 - ELEVATIONS OF BUILDING A AND B



1 WEST ELEVATION
AT-2
3/32" = 1'-0"

2 EAST ELEVATION
AT-2
3/32" = 1'-0"



4 NORTH ELEVATION
AT-2
3/32" = 1'-0"

3 SOUTH ELEVATION
AT-2
3/32" = 1'-0"

60 King Road

DP/VC SRPI.23.040

BLOCK 1 File NO. ZBLA-22-0023

CITY OF RICHMOND HILL
PLANNING AND INFRASTRUCTURE
DEPARTMENT