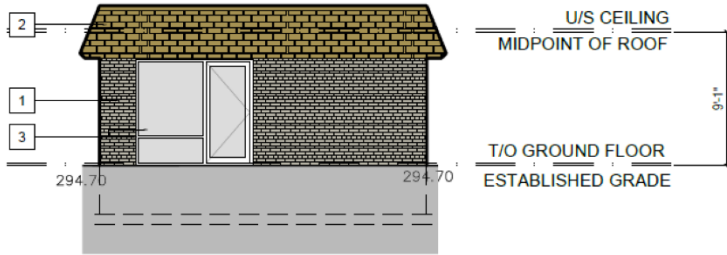
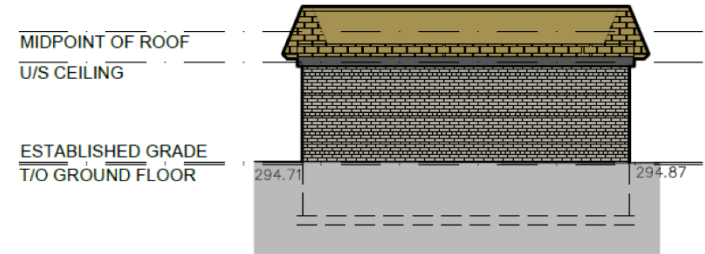


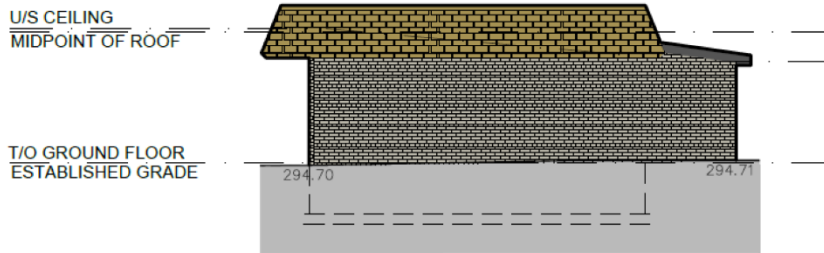
MAP 6 - ELEVATIONS OF BUILDING C



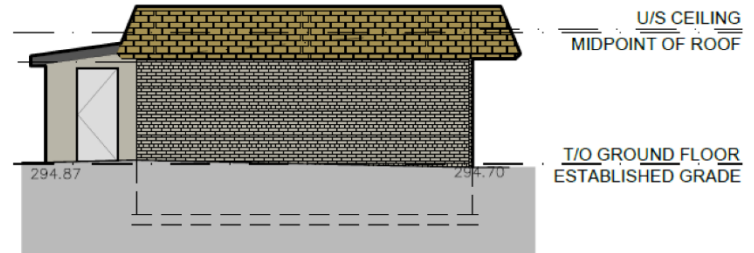
3 WEST ELEVATION
A2.1 3/32" = 1'-0"



4 EAST ELEVATION
A2.1 3/32" = 1'-0"



5 SOUTH ELEVATION
A2.1 3/32" = 1'-0"



6 NORTH ELEVATION
A2.1 3/32" = 1'-0"

60 King Road

DP/VC SRPI.23.040

BLOCK 1 File NO. ZBLA-22-0023

CITY OF RICHMOND HILL
PLANNING AND INFRASTRUCTURE
DEPARTMENT