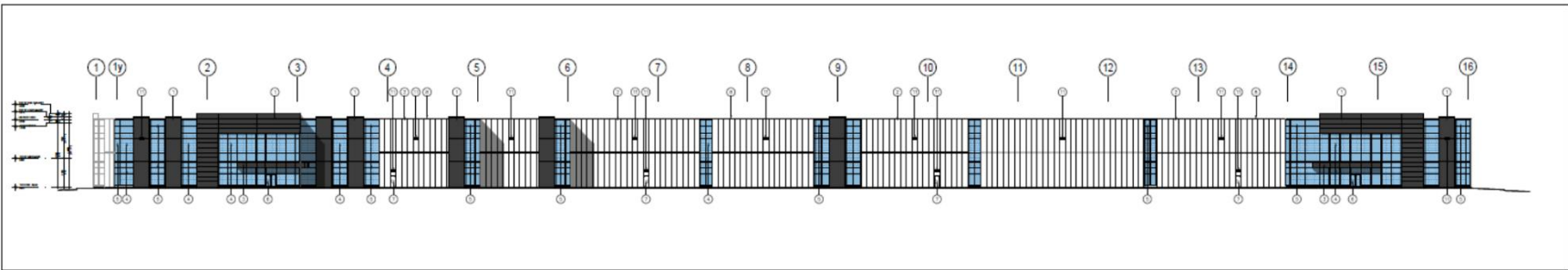
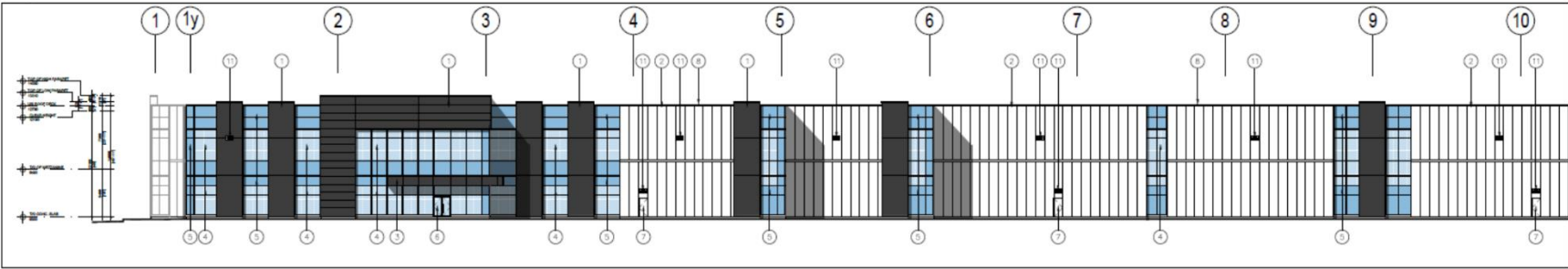


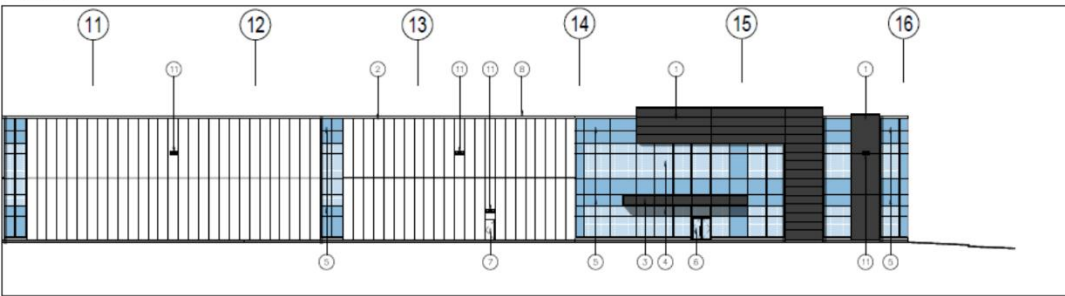
MAP 6 - PROPOSED ELEVATIONS



1 OVERALL SOUTH ELEVATION
A-3.0 l:250

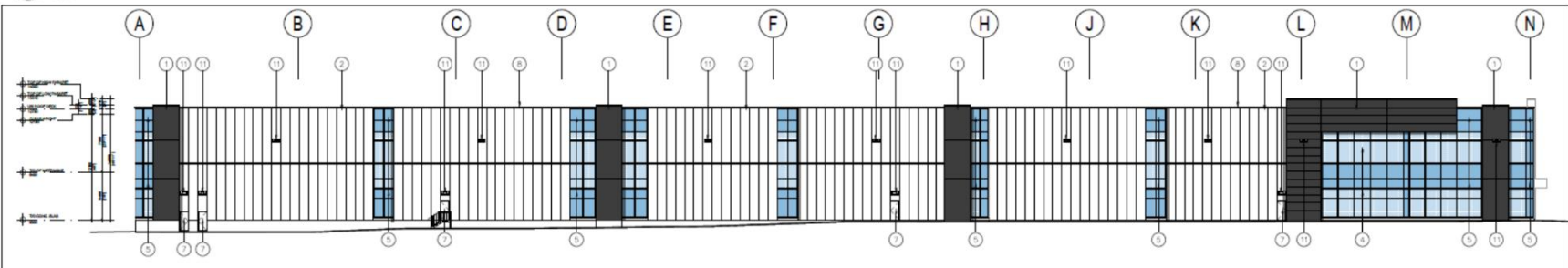


2 PARTIAL SOUTH ELEVATION
A-3.0 l:250



3 PARTIAL SOUTH ELEVATION
A-3.0 l:250

- 1 INSULATED METAL PANELS BY KINGSPAN OR APPROVED EQUAL. COLOUR TO BE ZINC GREY. SAMPLE TO BE SUBMITTED FOR ARCHITECT'S APPROVAL.
- 2 INSULATED METAL PANELS BY KINGSPAN OR APPROVED EQUAL. COLOUR TO RESH. WHITE. SAMPLE TO BE SUBMITTED FOR ARCHITECT'S APPROVAL.
- 3 COMPOSITE ALUMINIUM PANELS BY ALUPOLC (COLOUR: CINC CHARCOAL)
- 4 REFLECTIVE TINTED THERMAL VISION GLAZING OR BIRD FRIENDLY GLAZING WITH VISUAL MARKERS. (COLOUR OF GLAZING: BLUE TINT)
- 5 SPANDEK PANEL OR CLEAR ANODIZED THERMALLY BROKEN ALUMINIUM CURTAIN WALL PANELS. COLOUR OF SPANDREK: BLUE
- 6 ALUMINIUM AND THERMAL GLASS DOORS IN ALUMINIUM CURTAIN WALL DOOR FRAMING SYSTEM. GLASS TO BE CLEAR. ALUMINIUM COLOUR TO MATCH WINDOW GLAZING SYSTEM ALUMINIUM COLOUR.
- 7 INSULATED HOLLOW METAL DOOR IN PRESSED STEEL THERMAL FRAME. DOOR AND FRAME PAINTED TO MATCH ADJACENT WALL COLOUR.
- 8 PREFINISHED METAL COPING. COLOUR TO MATCH ADJACENT MATERIAL DIRECTLY BELOW.
- 9 INSULATED HOLLOW METAL OVERHEAD DOOR OR THERMAL GLASS VIEW WINDOW. COLOUR TO BE GREY TO MATCH INSULATED METAL PANELS. ON DOOR SEAL, DOOR LEVELLER AND DOOR BUMPERS.
- 10 INSULATED HOLLOW METAL OVERHEAD DOOR OR THERMAL GLASS VIEW WINDOW. COLOUR TO BE GREY TO MATCH INSULATED METAL PANELS.
- 11 PRECAST CONCRETE WITH AGGREGATE FINISH. COLOUR TO BE WHITE.
- 12 LIGHT FIXTURE. SEE ELECTRICAL DRAWINGS FOR MOUNTING HEIGHTS.



4 WEST ELEVATION
A-3.0 l:250

0 East Beaver Creek Road

GL/VC SRPI.23.051

BLOCK 28 File NO. SP-23-0006

CITY OF RICHMOND HILL
PLANNING AND INFRASTRUCTURE
DEPARTMENT