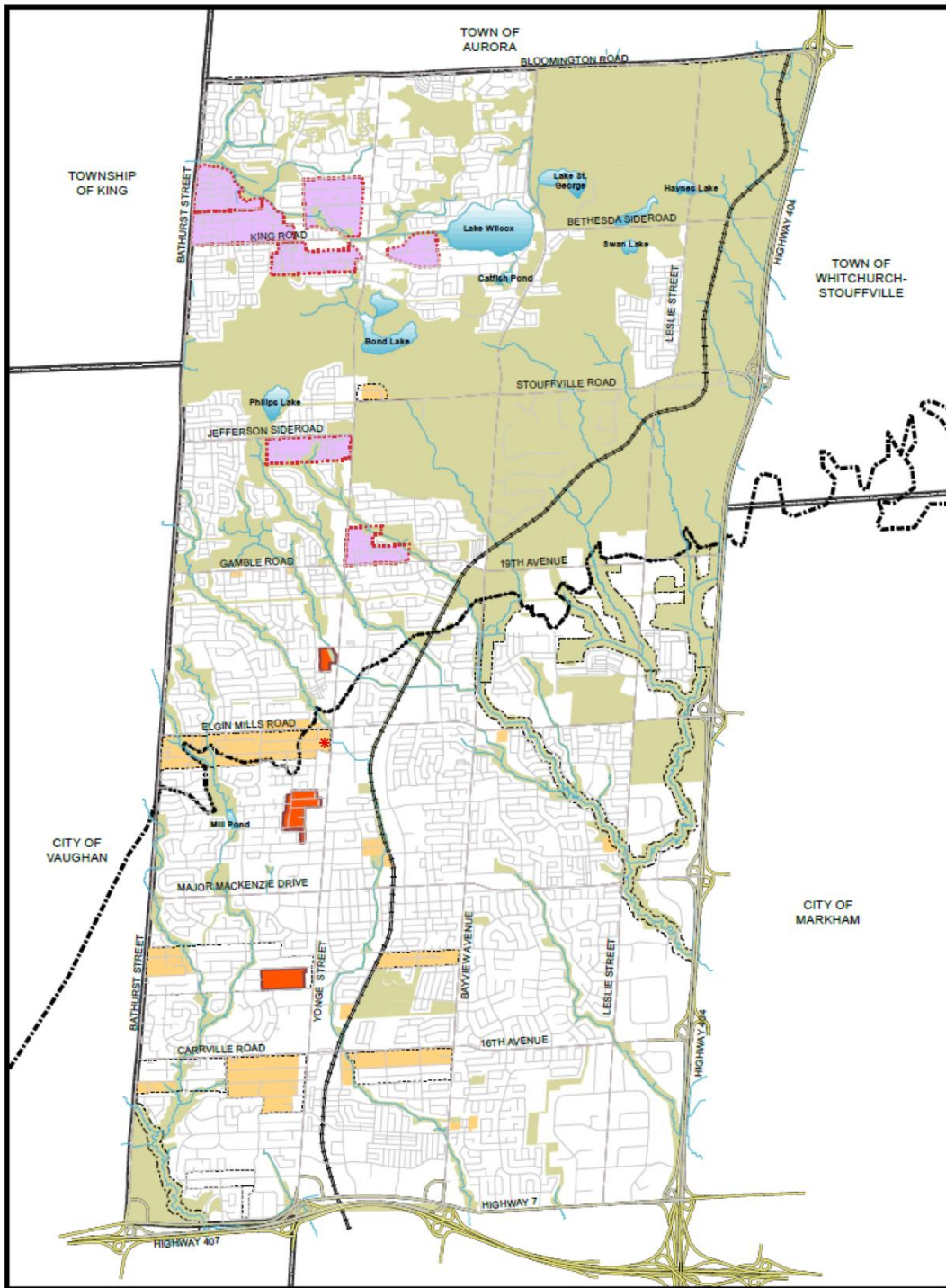


MAP 3 - EXISTING OFFICIAL PLAN - INFILL PRIORITY AREAS



PRIORITY INFILL AREAS
APPENDIX 9

Legend

Priority Infill Areas

- Areas Subject to a Council Approved Study & Policy 4.9.1.1(D) of the Official Plan
- Infill Study Area
- Tertiary Plan Study
- Areas without a Council Approved Study & Subject to the Policies set out in Section 4.9.1.1 of the Official Plan
- Historical Council Approved Infill Study Area Boundary
- Historical Council Approved Tertiary Plan Study Area Boundary
- Historical Infill Area Boundary (Not Subject to a Previous Council Approved Study)

NOTE: The information provided in this Schedule constitutes an overview of the historical information. While every effort is made to ensure its accuracy, accuracy and completeness, it is not a plan of action. Due to site conditions and changes that occur over time, the City reserves the right to amend, update and complete. Historical outlines are provided to assist in understanding the City of Richmond Hill Planning and Infrastructure Department to ensure that the information provided in this Schedule is accurate and complete as of the date.

- Oak Ridges Moraine Conservation Plan Area
- Greenbelt Plan Area
- Waterbodies
- Watercourses
- C.N.R.
- YR Highways
- Regional Roads
- Greenway Systems

PLANNING AND INFRASTRUCTURE DEPARTMENT

1 0.5 0 1 Kilometres

Scale 1:46,000

LEGEND

*** SUBJECT LANDS**

10686 and 10692 Yonge Street

SF/SD SRPI.23.073

BLOCK 17 File NO. D01-20004 and D02-20010

**CITY OF RICHMOND HILL
PLANNING AND INFRASTRUCTURE
DEPARTMENT**