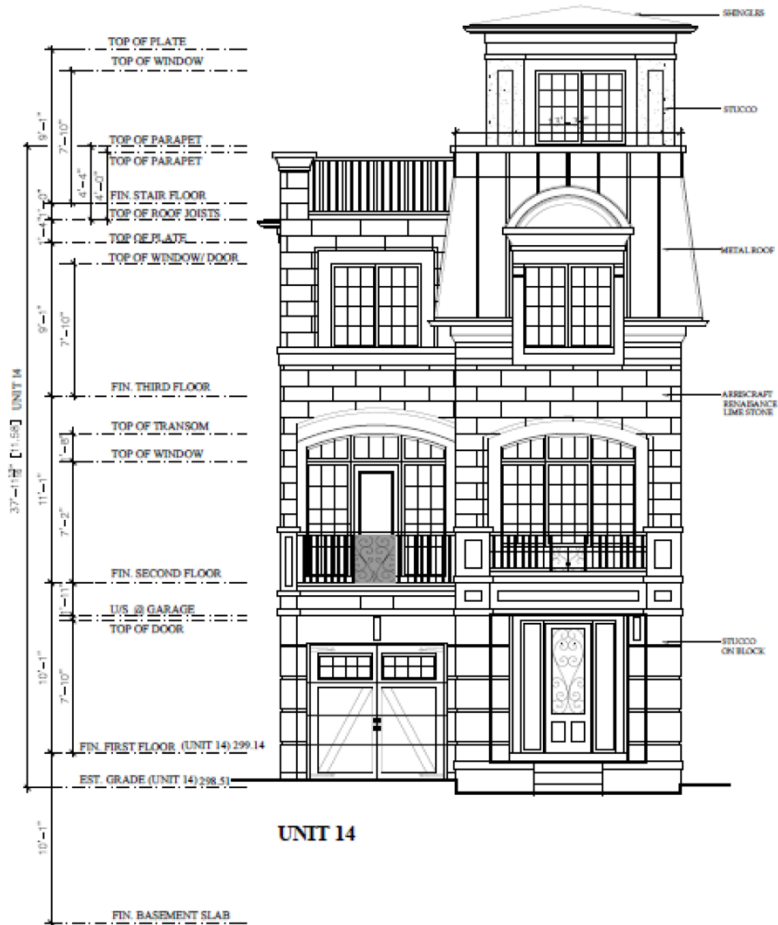
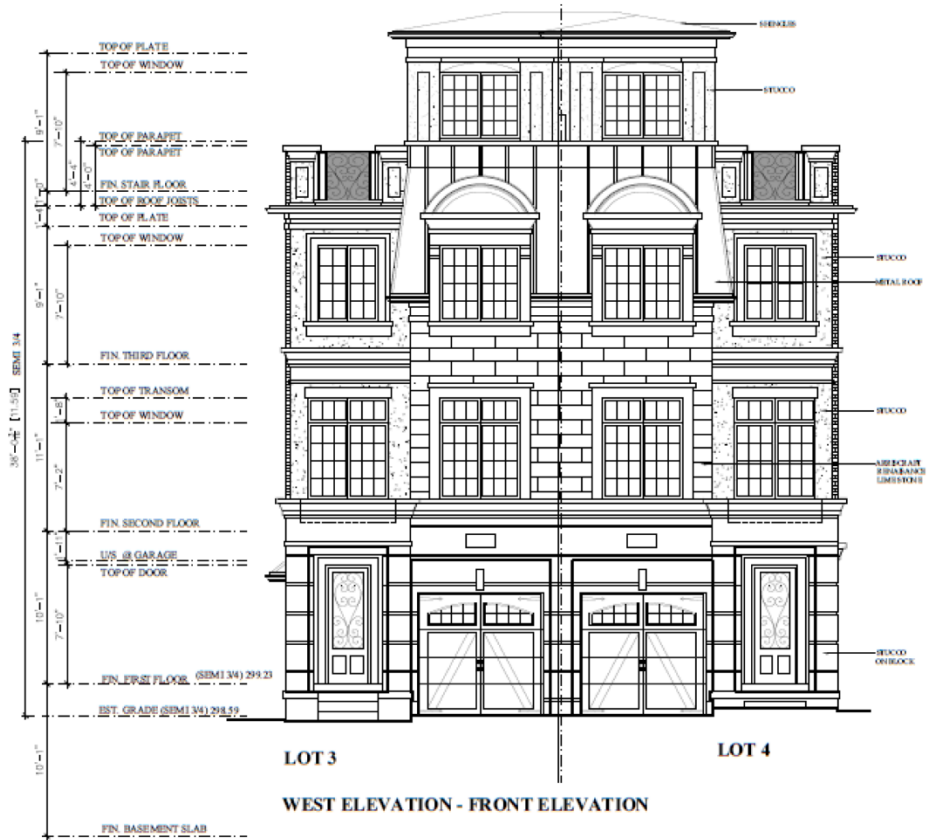


MAP 7 - PROPOSED ELEVATIONS



UNIT 14

SOUTH ELEVATION - FRONT ELEVATION



LOT 3

LOT 4

WEST ELEVATION - FRONT ELEVATION

7 Poplar Drive and 11,15,17 McCachen Street

MM/KG SRPBS.24.055

BLOCK 1 File NO. D02-22009

CITY OF RICHMOND HILL
PLANNING AND BUILDING SERVICES
DEPARTMENT