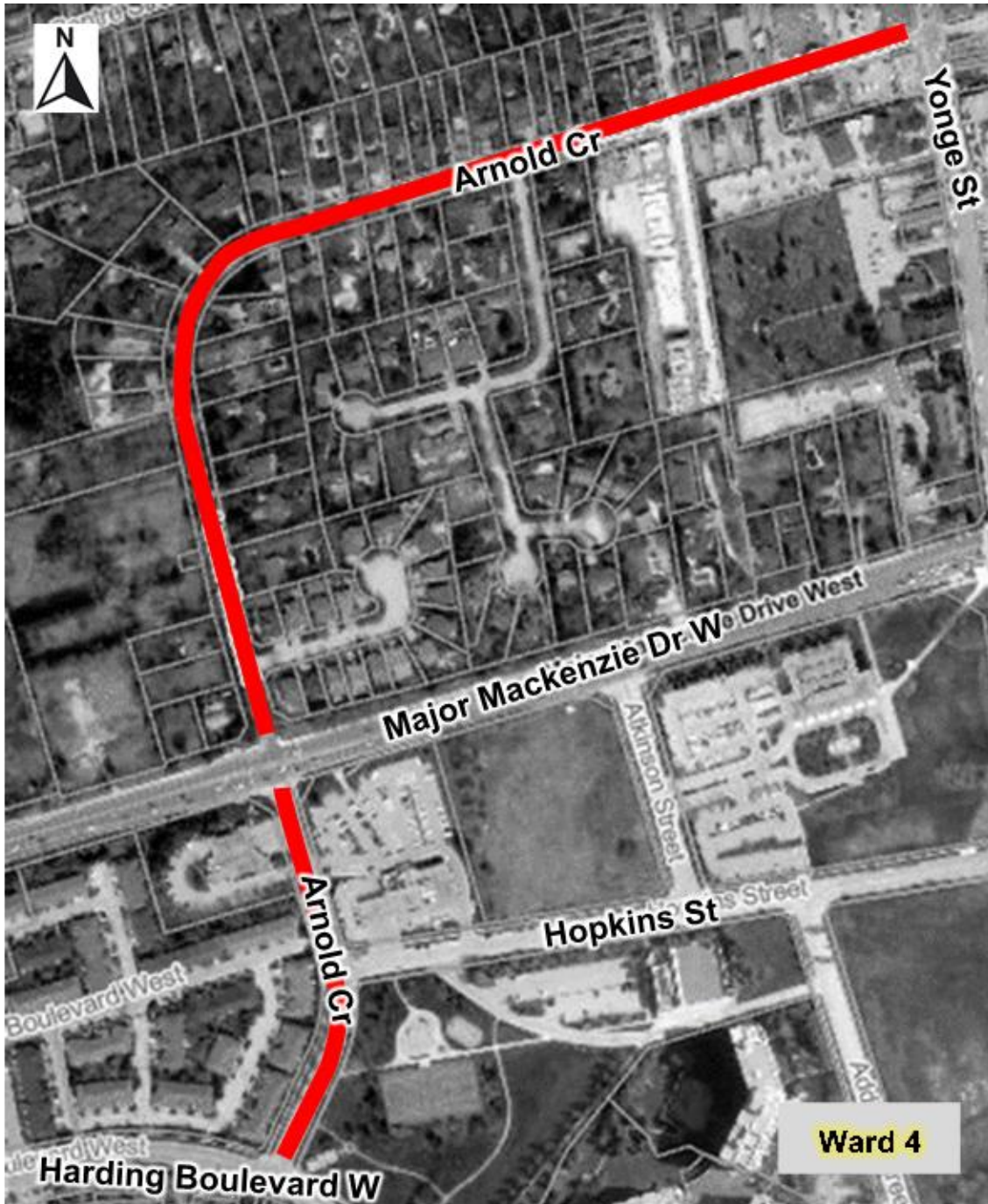


SRIES.24.004 – Attachment # 2
Proposed Speed Limit Modifications
Arnold Crescent



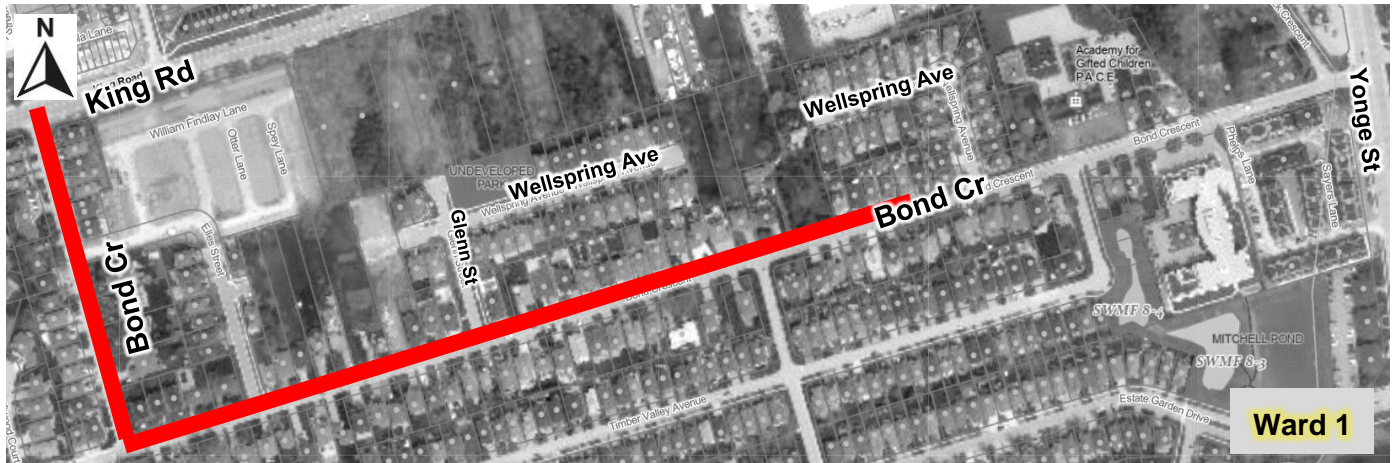
Legend:

 Proposed speed limit reduction (50km/h to 40 km/h)

Disclaimer


This information is provided as a public resource of general information by the City of Richmond Hill. The information is provided for convenience only, and the City of Richmond Hill disclaims any responsibility for content, accuracy, currency or completeness. This is not a plan of survey.

SRIES.24.004 – Attachment # 2
Proposed Speed Limit Modifications
Bond Crescent



NOTE: The section of Bond Crescent near Yonge Street is already a 40 km/h zone near the Academy for Gifted Children P.A.C.E

Legend:

 Proposed speed limit reduction (50km/h to 40 km/h)

Disclaimer
This information is provided as a public resource of general information by the City of Richmond Hill. The information is provided for convenience only, and the City of Richmond Hill disclaims any responsibility for content, accuracy, currency or completeness. This is not a plan of survey.

SRIES.24.004 – Attachment # 2
Proposed Speed Limit Modifications
Farnham Drive



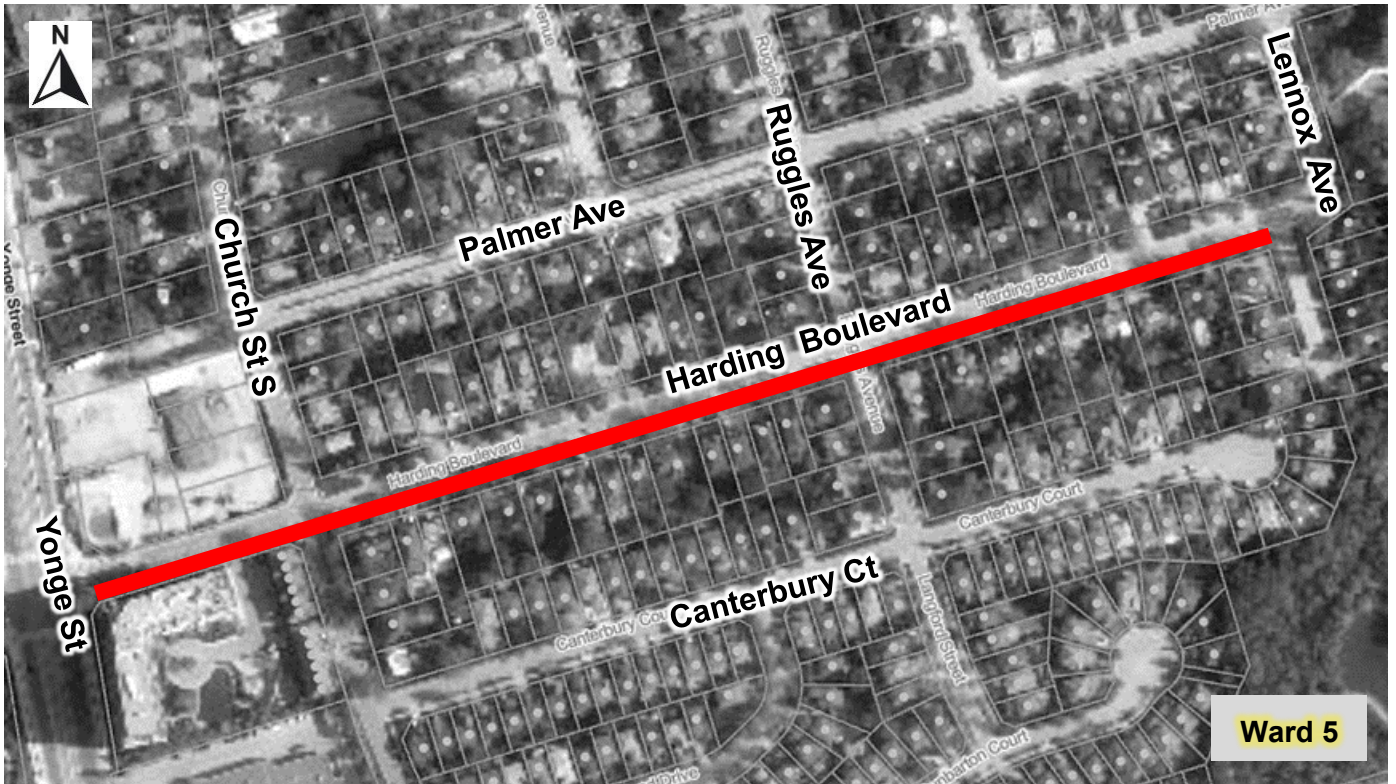
Legend:


 Proposed speed limit reduction (50km/h to 40 km/h)

Disclaimer

This information is provided as a public resource of general information by the City of Richmond Hill. The information is provided for convenience only, and the City of Richmond Hill disclaims any responsibility for content, accuracy, currency or completeness. This is not a plan of survey.

SRIES.24.004 – Attachment # 2
Proposed Speed Limit Modifications
Harding Boulevard



Legend:
 Proposed speed limit reduction (50km/h to 40 km/h)

Disclaimer
This information is provided as a public resource of general information by the City of Richmond Hill. The information is provided for convenience only, and the City of Richmond Hill disclaims any responsibility for content, accuracy, currency or completeness. This is not a plan of survey.

SRIES.24.004 – Attachment # 2
Proposed Speed Limit Modifications
Newbridge Avenue



Legend:

 Proposed speed limit reduction (50km/h to 40 km/h)

Disclaimer

This information is provided as a public resource of general information by the City of Richmond Hill. The information is provided for convenience only, and the City of Richmond Hill disclaims any responsibility for content, accuracy, currency or completeness. This is not a plan of survey.

SRIES.24.004 – Attachment # 2
Proposed Speed Limit Modifications
North Lake Road



Legend:

 **Proposed speed limit reduction (50km/h to 40 km/h)**

Disclaimer

This information is provided as a public resource of general information by the City of Richmond Hill. The information is provided for convenience only, and the City of Richmond Hill disclaims any responsibility for content, accuracy, currency or completeness. This is not a plan of survey.

SRIES.24.004 - Attachment # 2
Proposed Speed Limit Modifications
Palmer Avenue



Legend:

 Proposed speed limit reduction (50km/h to 40 km/h)

Disclaimer
This information is provided as a public resource of general information by the City of Richmond Hill. The information is provided for convenience only, and the City of Richmond Hill disclaims any responsibility for content, accuracy, currency or completeness. This is not a plan of survey.

SRIES.24.004 - Attachment # 2
Proposed Speed Limit Modifications
Stockdale Crescent



Legend:

 Proposed speed limit reduction (50km/h to 40 km/h)

Disclaimer

This information is provided as a public resource of general information by the City of Richmond Hill. The information is provided for convenience only, and the City of Richmond Hill disclaims any responsibility for content, accuracy, currency or completeness. This is not a plan of survey.