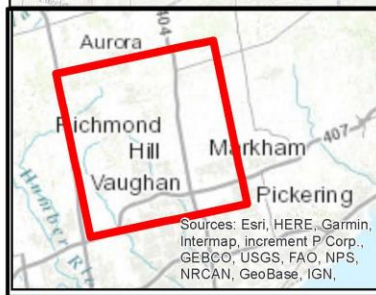






Sources: Esri, HERE, Garmin, Intermap, increment P Corp., GEBCO, USGS, FAO, NPS, NRCAN, GeoBase, IGN, Kadaster NL, Ordnance Survey, Esri Japan, METI, Esri China (Hong Kong), (c) OpenStreetMap contributors, and the GIS User Community



Sources: Esri, HERE, Garmin, Intermap, increment P Corp., GEBCO, USGS, FAO, NPS, NRCAN, GeoBase, IGN,

Legend

-  City_Boundary
-  Area_1

Schedule B1 - Area 1
TO BY-LAW

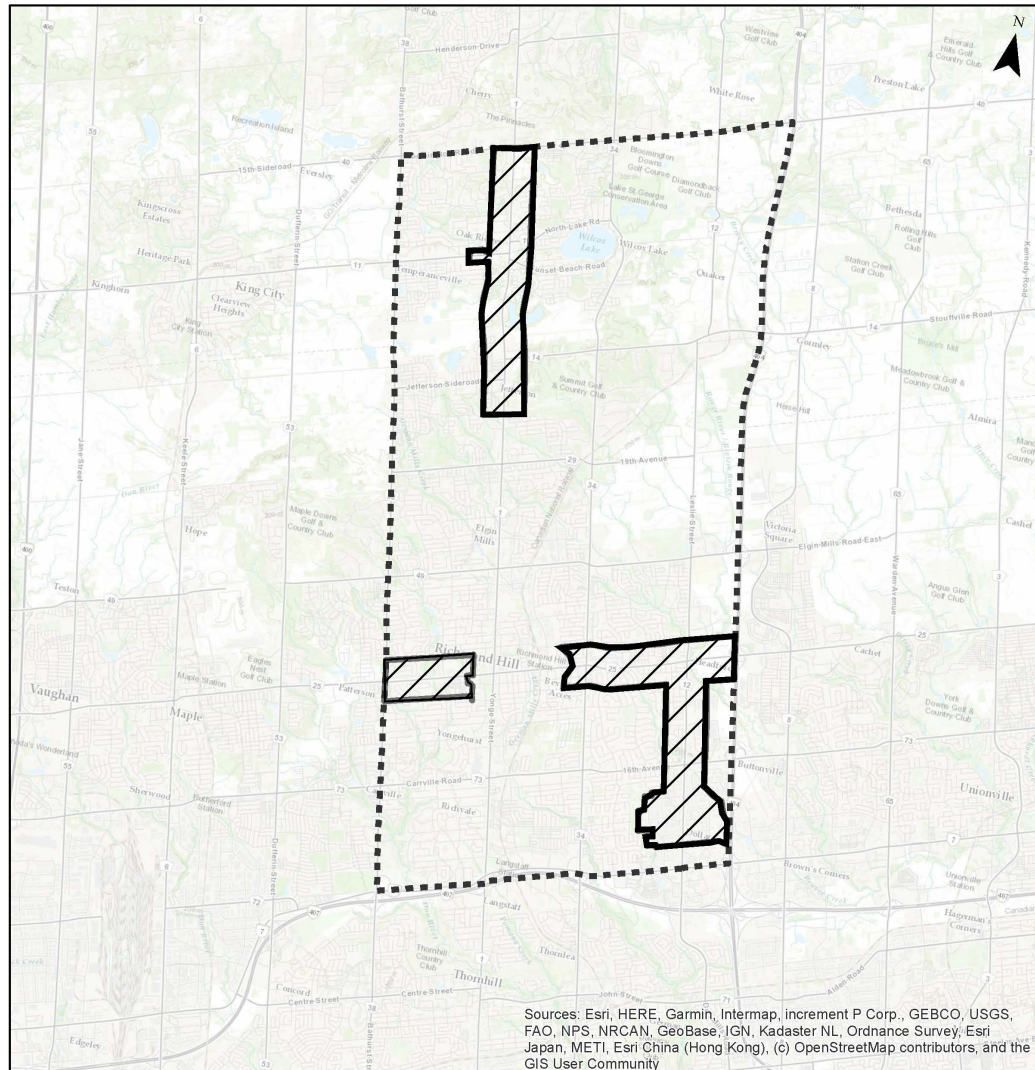
SCHEDULE "B – Area 1"

TO BY-LAW NO. ____

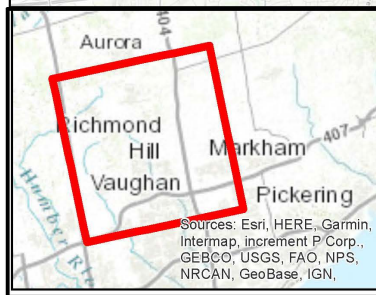
This is Schedule "B – Area 1" to By-Law
____ passed by the Council
of the Corporation of the
City of Richmond Hill on the

David West
Mayor

Stephen M.A. Huycke
City Clerk



Sources: Esri, HERE, Garmin, Intermap, increment P Corp., GEBCO, USGS, FAO, NPS, NRCAN, GeoBase, IGN, Kadaster NL, Ordnance Survey, Esri Japan, METI, Esri China (Hong Kong), (c) OpenStreetMap contributors, and the GIS User Community



Legend

- City_Boundary
- Area 2

Schedule B2 - Area 2
TO BY-LAW

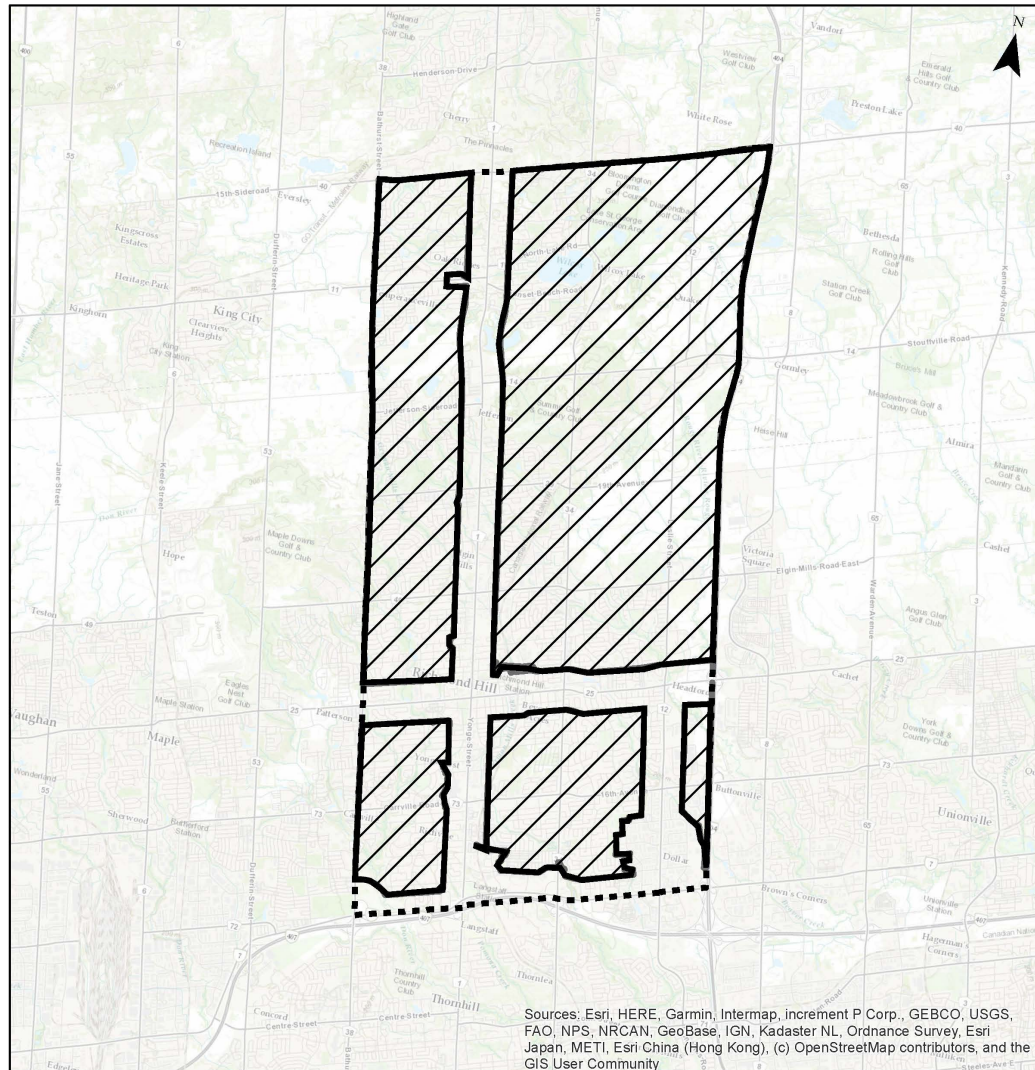
SCHEDULE “B – Area 2”

TO BY-LAW NO. ____

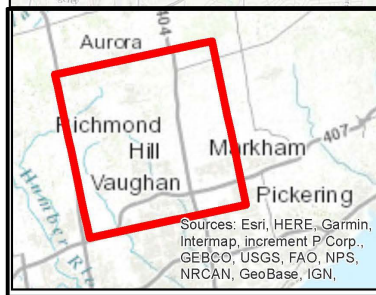
This is Schedule "B – Area 2" to By-Law
____ passed by the Council
of the Corporation of the
City of Richmond Hill on the

David West
Mayor

Stephen M.A. Huycke
City Clerk



Sources: Esri, HERE, Garmin, Intermap, increment P Corp., GEBCO, USGS, FAO, NPS, NRCAN, GeoBase, IGN, Kadaster NL, Ordnance Survey, Esri Japan, METI, Esri China (Hong Kong), (c) OpenStreetMap contributors, and the GIS User Community



Sources: Esri, HERE, Garmin, Intermap, increment P Corp., GEBCO, USGS, FAO, NPS, NRCAN, GeoBase, IGN,

Legend
 City_Boundary
 Area_3

Schedule B3 - Area 3
 TO BY-LAW

SCHEDULE "B – Area 3"

TO BY-LAW NO. ____

This is Schedule "B – Area 3" to By-Law
 ____ passed by the Council
 of the Corporation of the
 City of Richmond Hill on the

 David West
 Mayor

 Stephen M.A. Huycke
 City Clerk