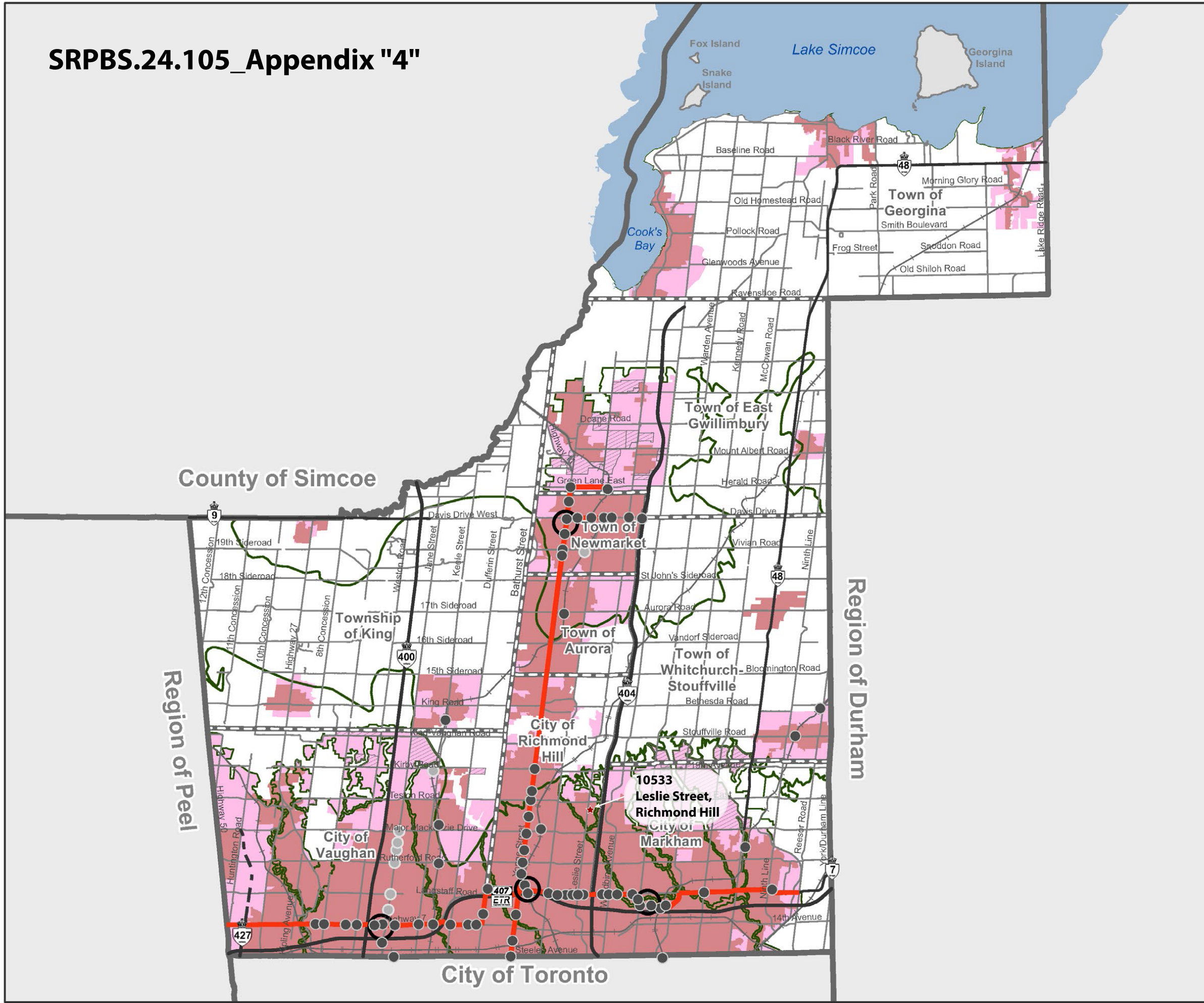



MAP 1B


URBAN SYSTEM OVERLAYS



- Regional Centre
 - Regional Corridor
 - Protected Major Transit Station Area
 - Future Major Transit Station Area
 - Built Up Area
- Greenbelt Plan**
- Greenbelt Plan Boundary
- Designated Greenfield Area**
- Designated Greenfield Area
 - ▨ New Community Area
- Provincial Highways**
- Existing
- Municipal Boundaries**
- Regional Municipal Boundary
 - Local Municipal Boundary
- ★ 10533 Leslie Street, Richmond Hill (Subject Lands)



0 2 4 6 8 10
Kilometres



Produced by: The Regional Municipality of York
 Planning and Economic Development Branch, Corporate Services Department, 2024
 Data: The Regional Municipality of York, The Regional Municipalities of Durham and Peel,
 County of Simcoe, City of Toronto
 Queen's Printer for Ontario 2003-2024. Includes Greenbelt and Oak Ridges Moraine
 Boundaries and Water Features
 Based on best available data and may contain minor errors or omissions.