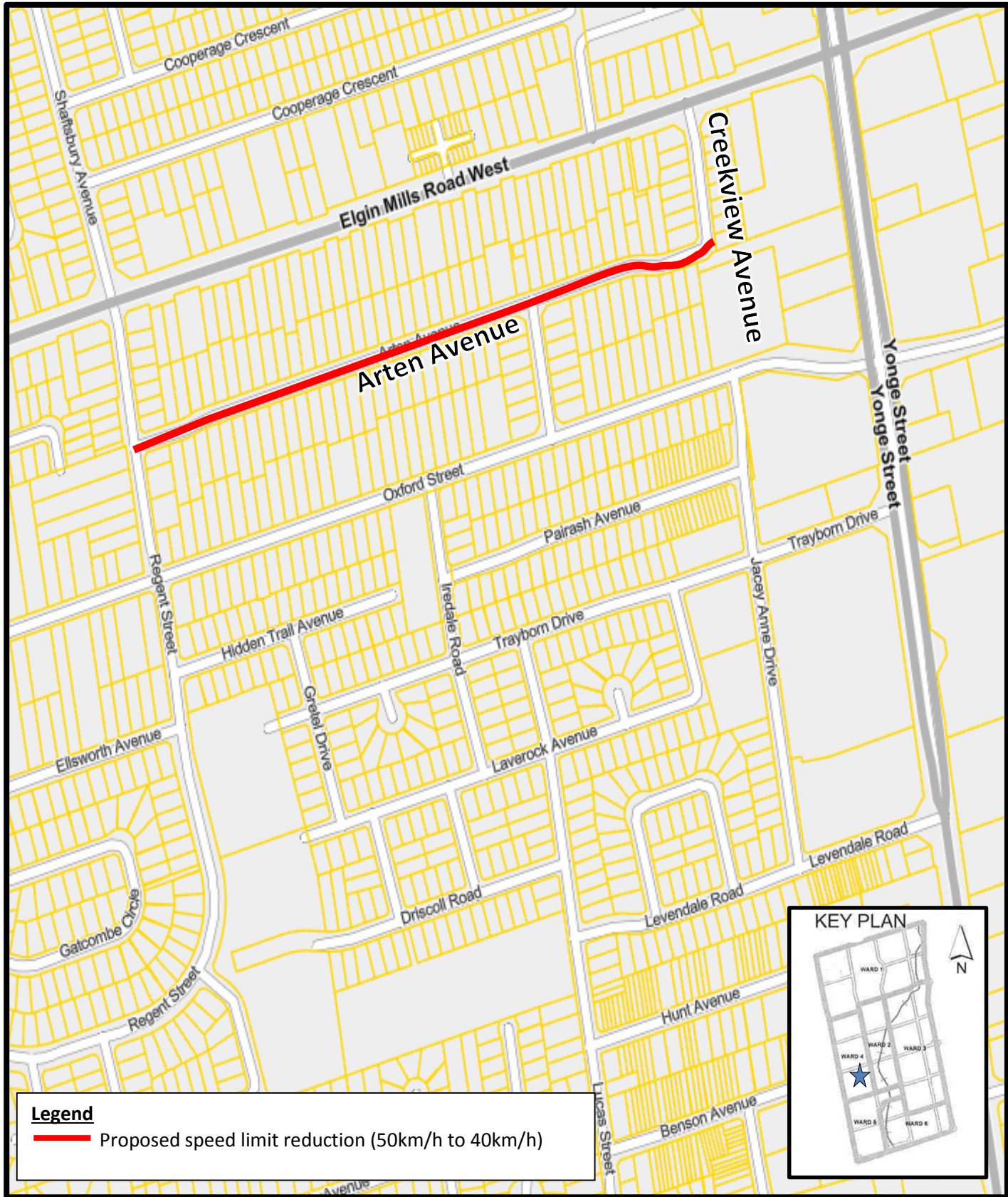


**SRIES.24.009 – Attachment 1 – Location Map
Proposed Speed Limit Modifications
Arten Avenue**

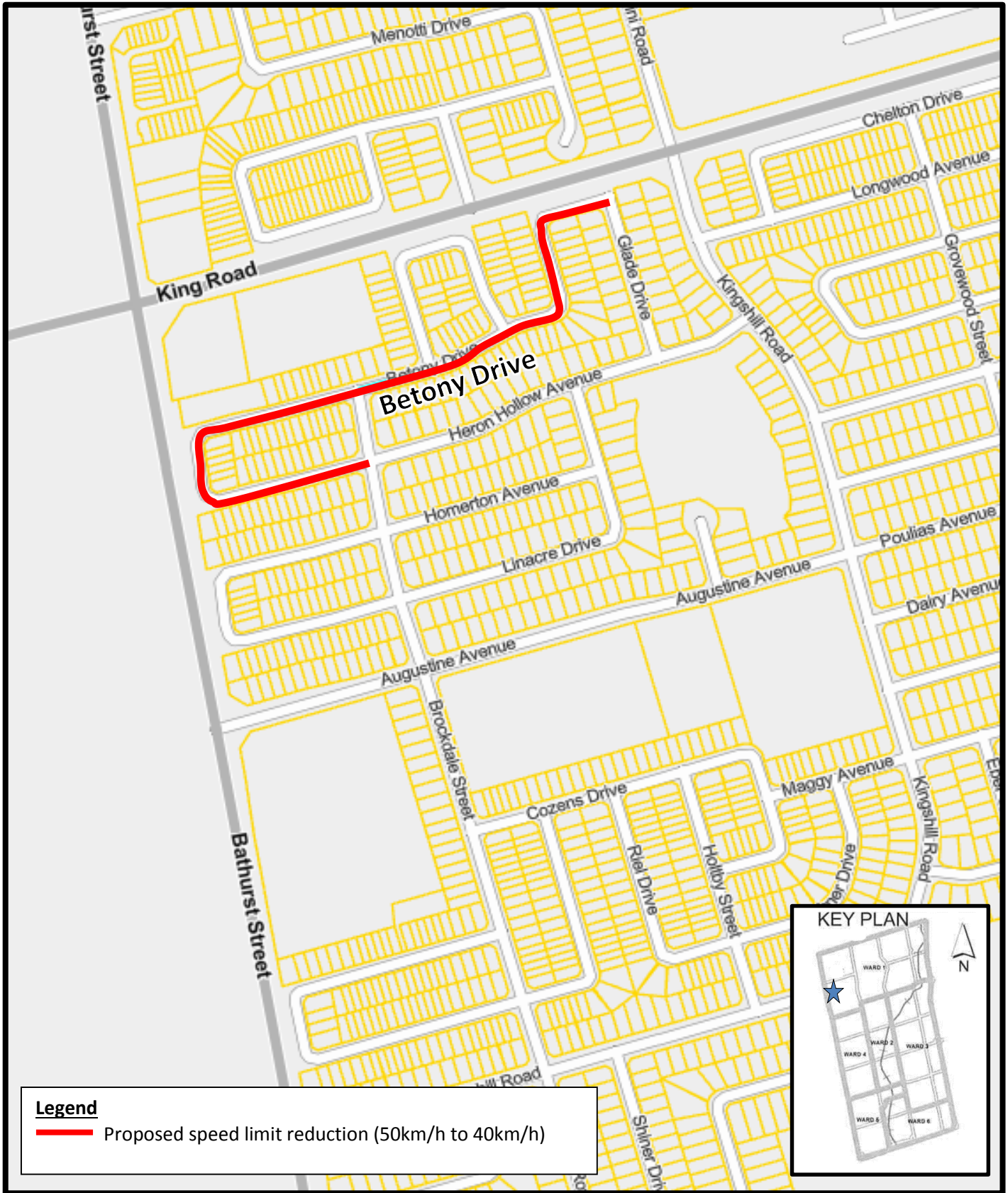


Legend
— Proposed speed limit reduction (50km/h to 40km/h)

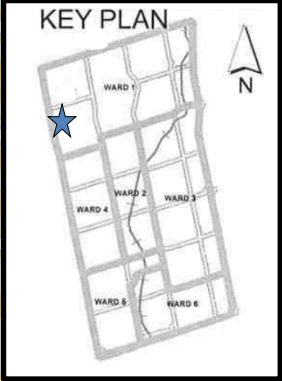
Disclaimer
 This information is provided as a public resource of general information by the City of Richmond Hill. The information is provided for convenience only, and the City of Richmond Hill disclaims any responsibility for content, accuracy, currency or completeness. This is not a plan of survey.



**SRIES.24.009 – Attachment 1 – Location Map
Proposed Speed Limit Modifications
Betony Drive**

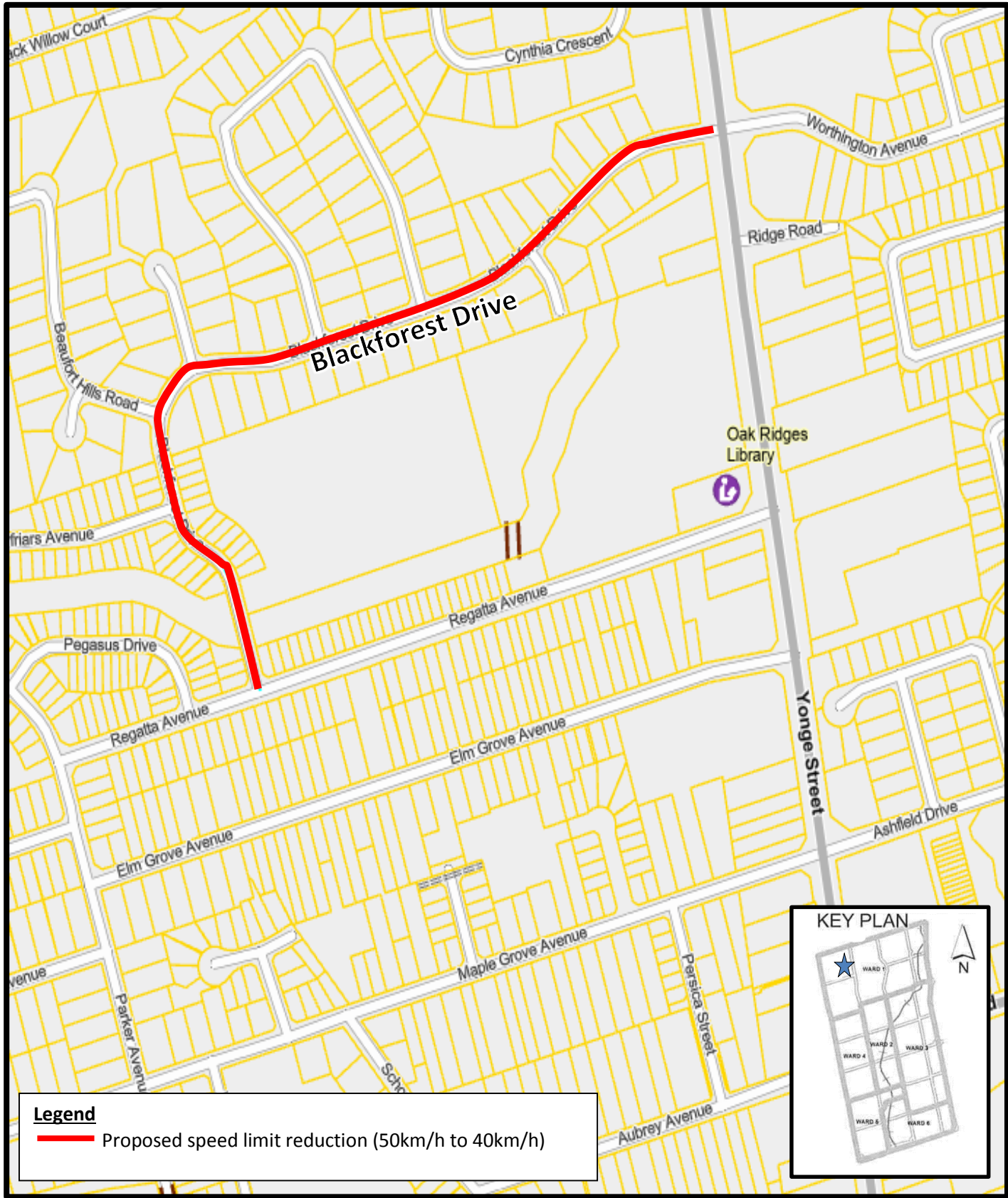


Legend
— Proposed speed limit reduction (50km/h to 40km/h)



Disclaimer
 This information is provided as a public resource of general information by the City of Richmond Hill. The information is provided for convenience only, and the City of Richmond Hill disclaims any responsibility for content, accuracy, currency or completeness. This is not a plan of survey.

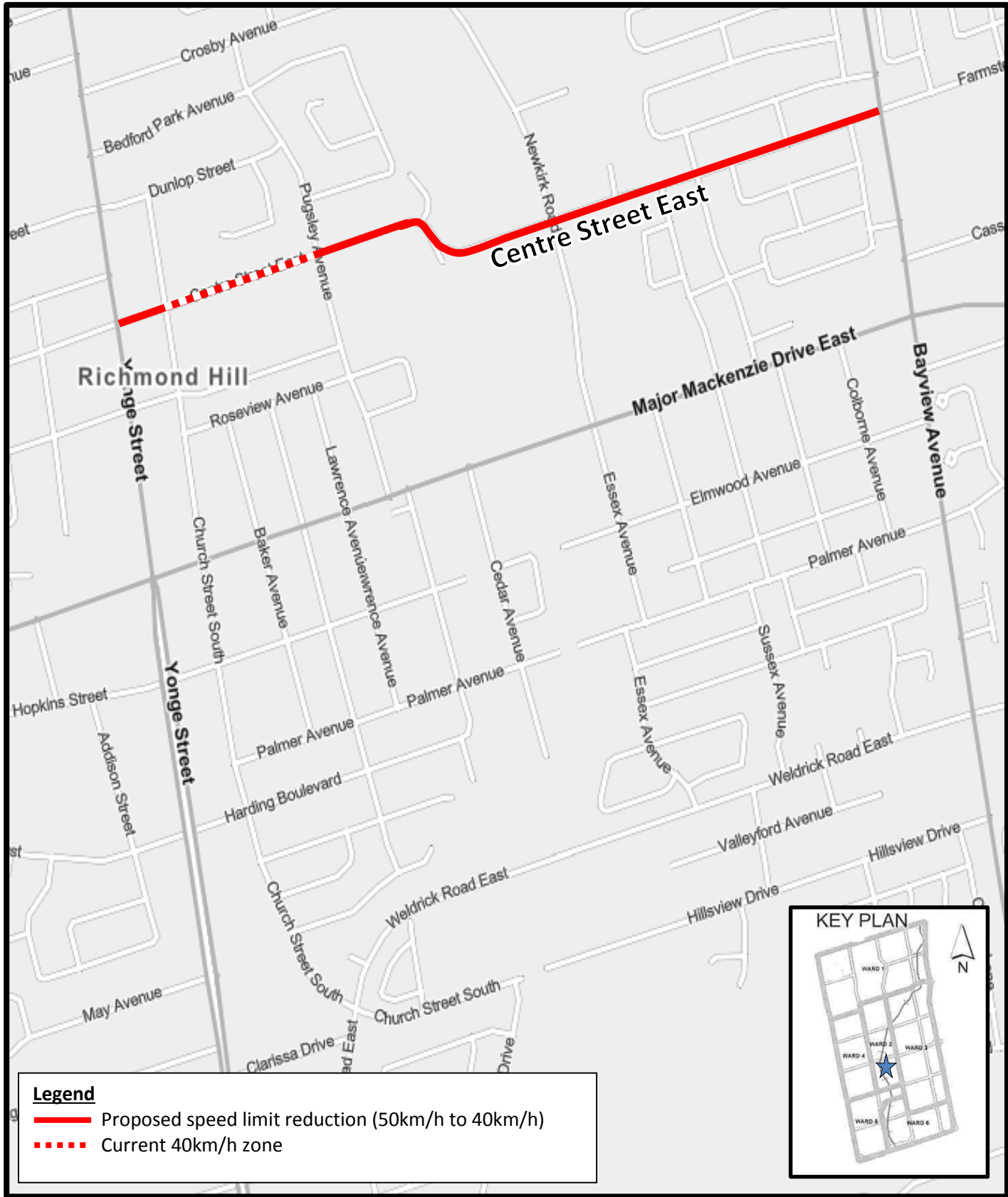
**SRIES.24.009 – Attachment 1 – Location Map
Proposed Speed Limit Modifications
Blackforest Drive**



Legend
— Proposed speed limit reduction (50km/h to 40km/h)

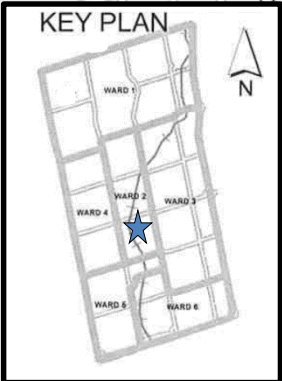
Disclaimer
This information is provided as a public resource of general information by the City of Richmond Hill. The information is provided for convenience only, and the City of Richmond Hill disclaims any responsibility for content, accuracy, currency or completeness. This is not a plan of survey.

**SRIES.24.009 – Attachment 1 – Location Map
Proposed Speed Limit Modifications
Centre Street East**



Legend

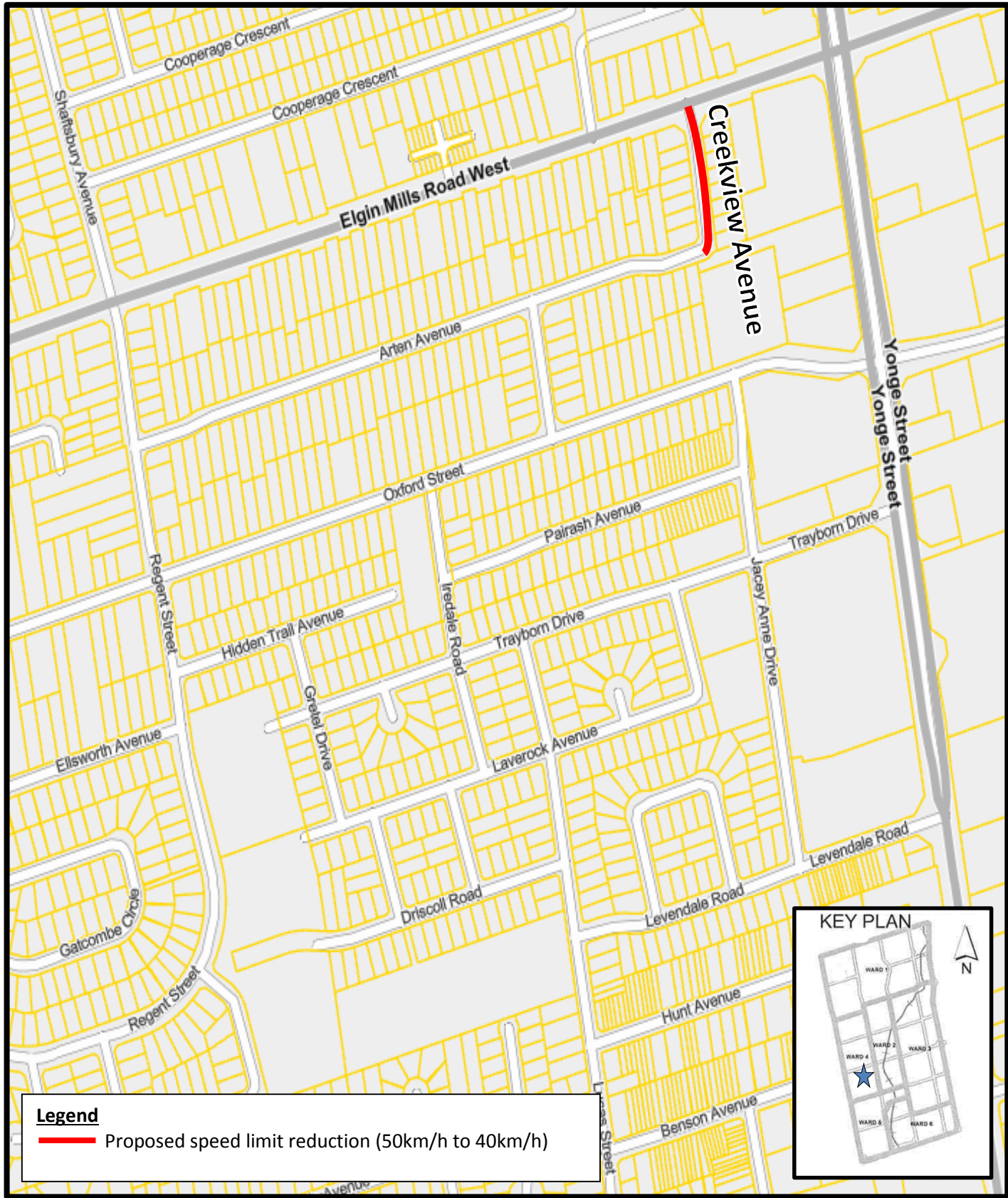
- Proposed speed limit reduction (50km/h to 40km/h)
- - - Current 40km/h zone



Disclaimer
This information is provided as a public resource of general information by the City of Richmond Hill. The information is provided for convenience only, and the City of Richmond Hill disclaims any responsibility for content, accuracy, currency or completeness. This is not a plan of survey.



**SRIES.24.009 – Attachment 1 – Location Map
Proposed Speed Limit Modifications
Creekview Avenue**

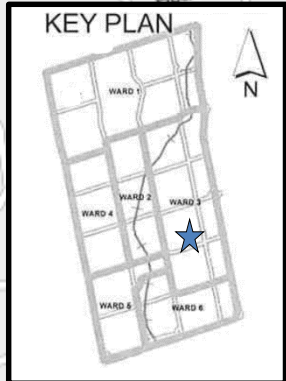
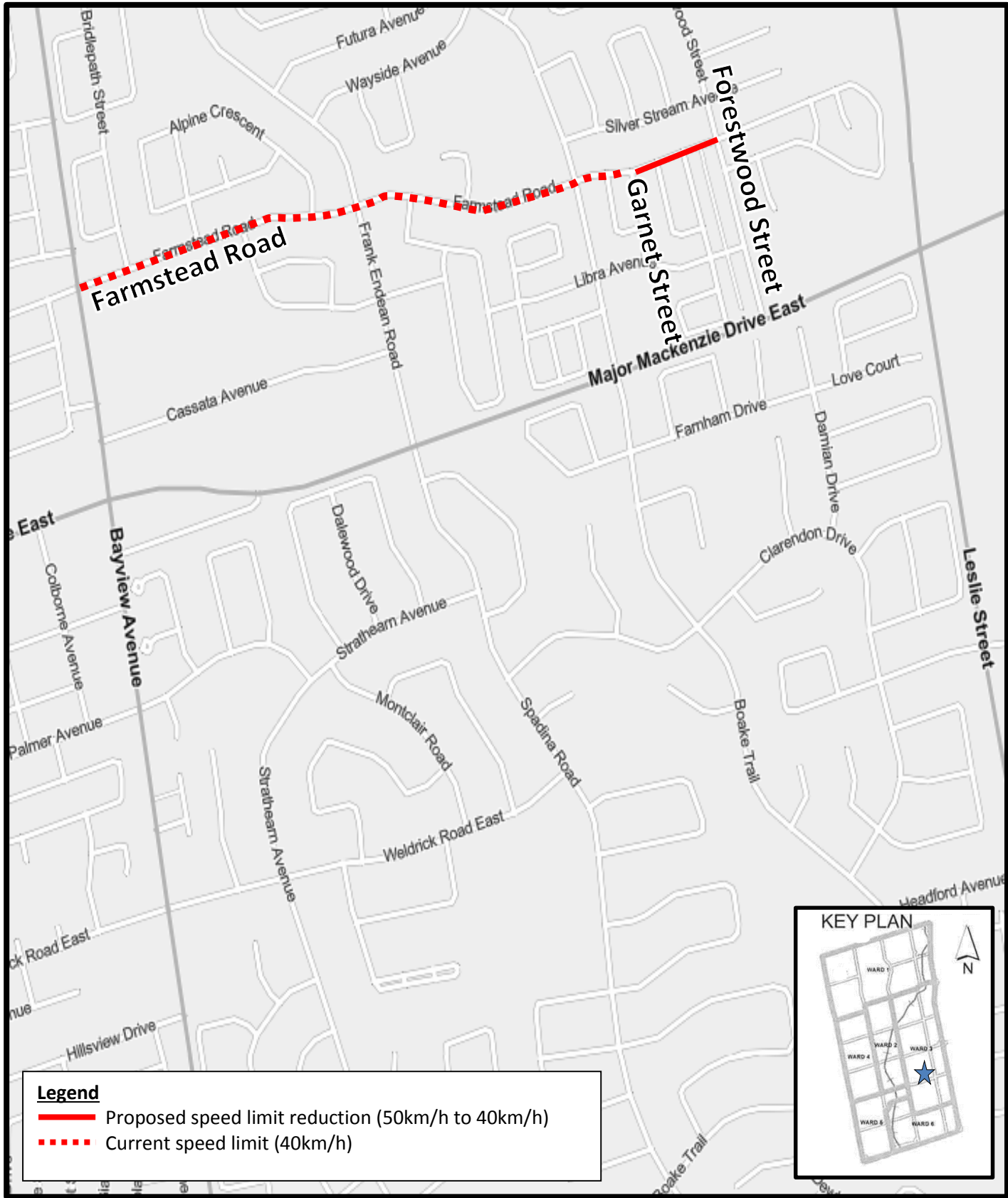




Legend
— Proposed speed limit reduction (50km/h to 40km/h)

Disclaimer
 This information is provided as a public resource of general information by the City of Richmond Hill. The information is provided for convenience only, and the City of Richmond Hill disclaims any responsibility for content, accuracy, currency or completeness. This is not a plan of survey.



**SRIES.24.009 – Attachment 1 – Location Map
Proposed Speed Limit Modifications
Farmstead Road**

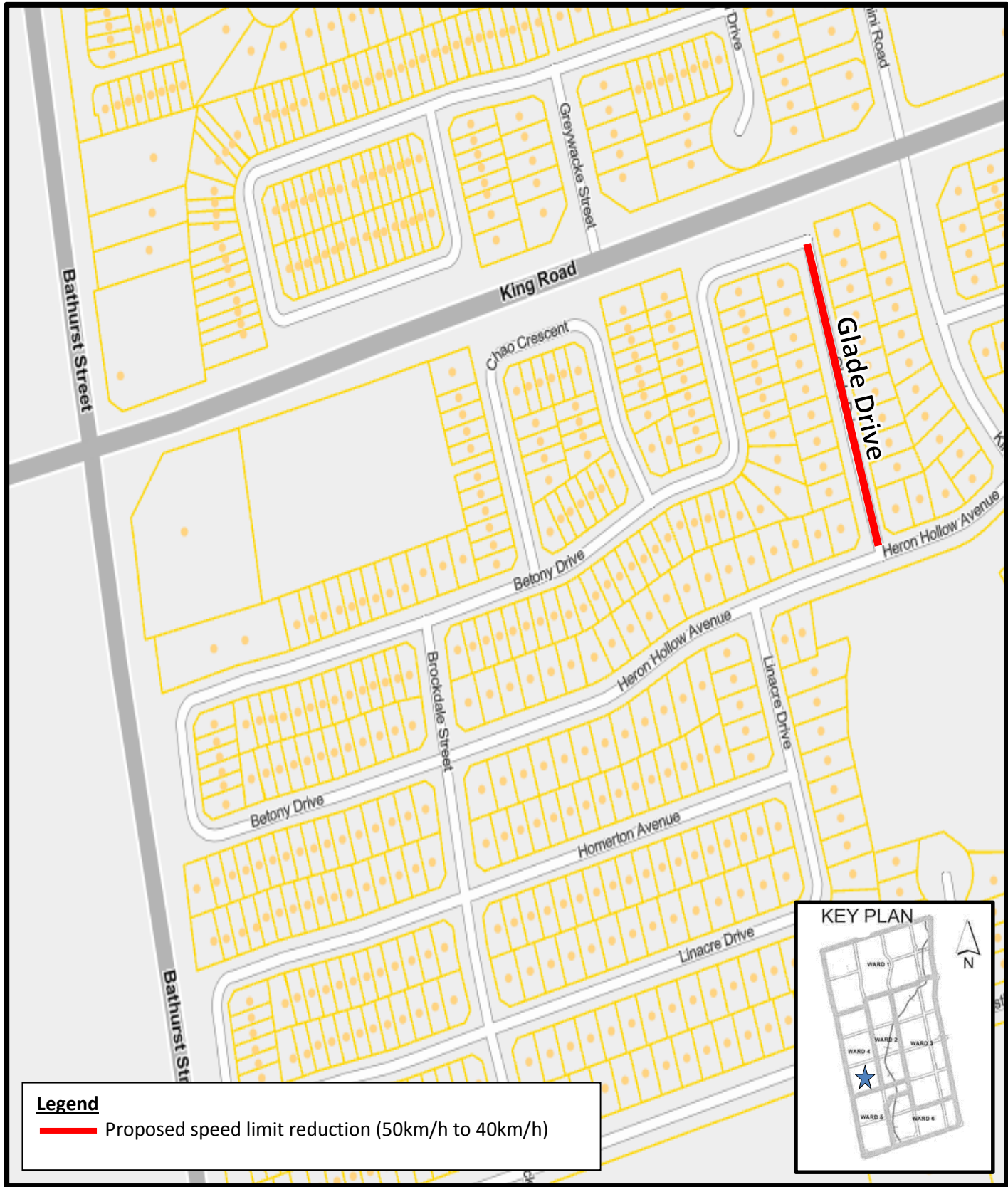


Legend	
	Proposed speed limit reduction (50km/h to 40km/h)
	Current speed limit (40km/h)

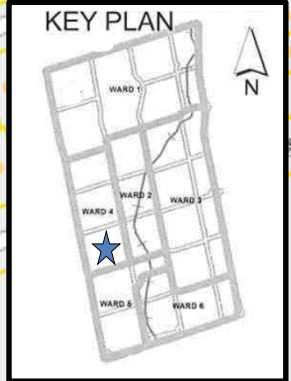
Disclaimer
This information is provided as a public resource of general information by the City of Richmond Hill. The information is provided for convenience only, and the City of Richmond Hill disclaims any responsibility for content, accuracy, currency or completeness. This is not a plan of survey.



**SRIES.24.009 – Attachment 1 – Location Map
Proposed Speed Limit Modifications
Glade Drive**



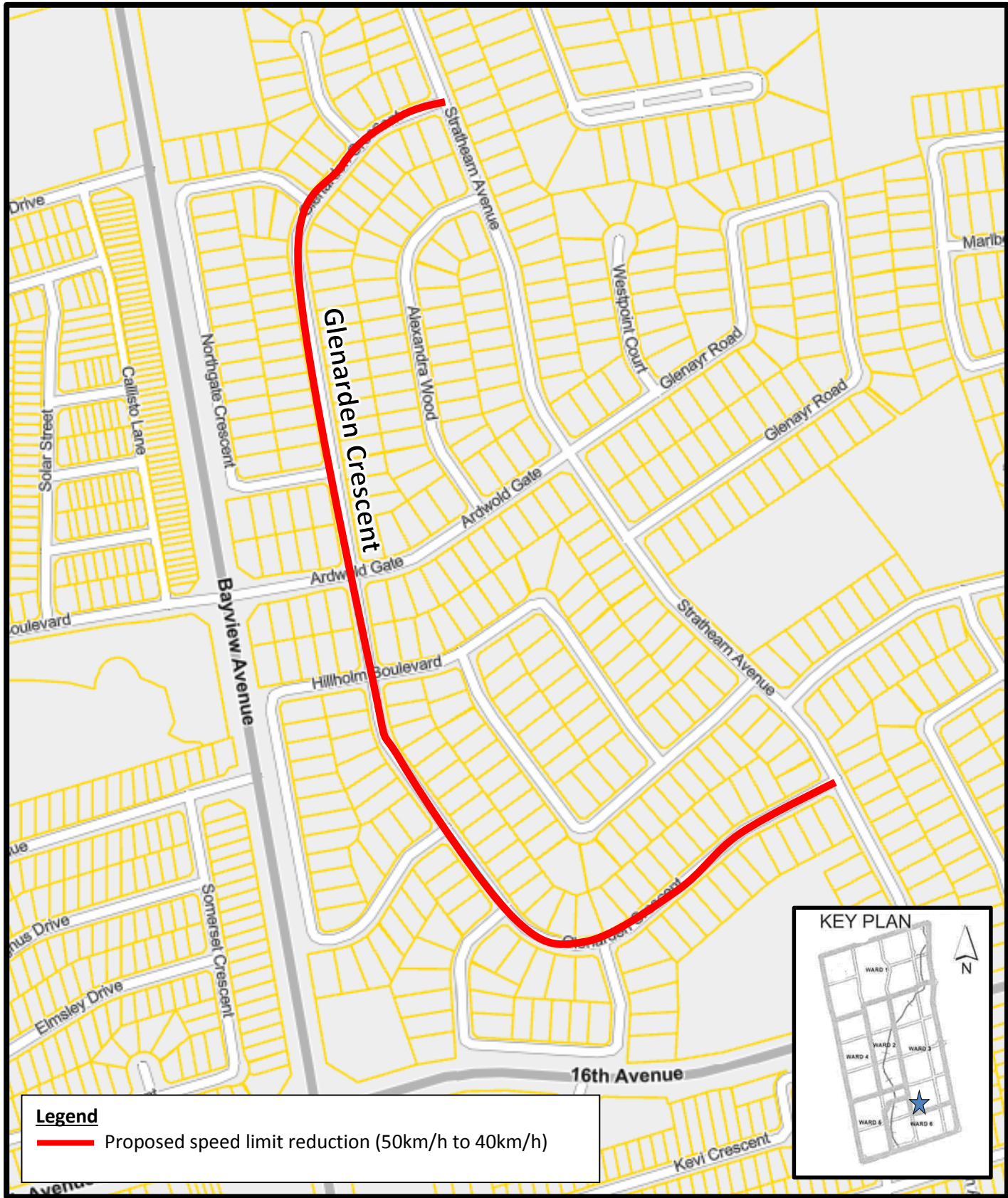
Legend
— Proposed speed limit reduction (50km/h to 40km/h)



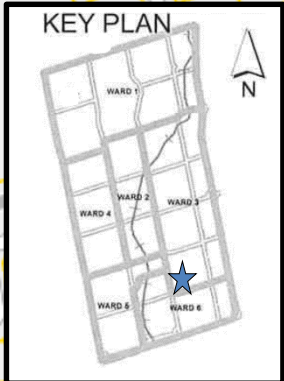
Disclaimer
This information is provided as a public resource of general information by the City of Richmond Hill. The information is provided for convenience only, and the City of Richmond Hill disclaims any responsibility for content, accuracy, currency or completeness. This is not a plan of survey.



SRIES.24.009 – Attachment 1 – Location Map
Proposed Speed Limit Modifications
Glenarden Crescent

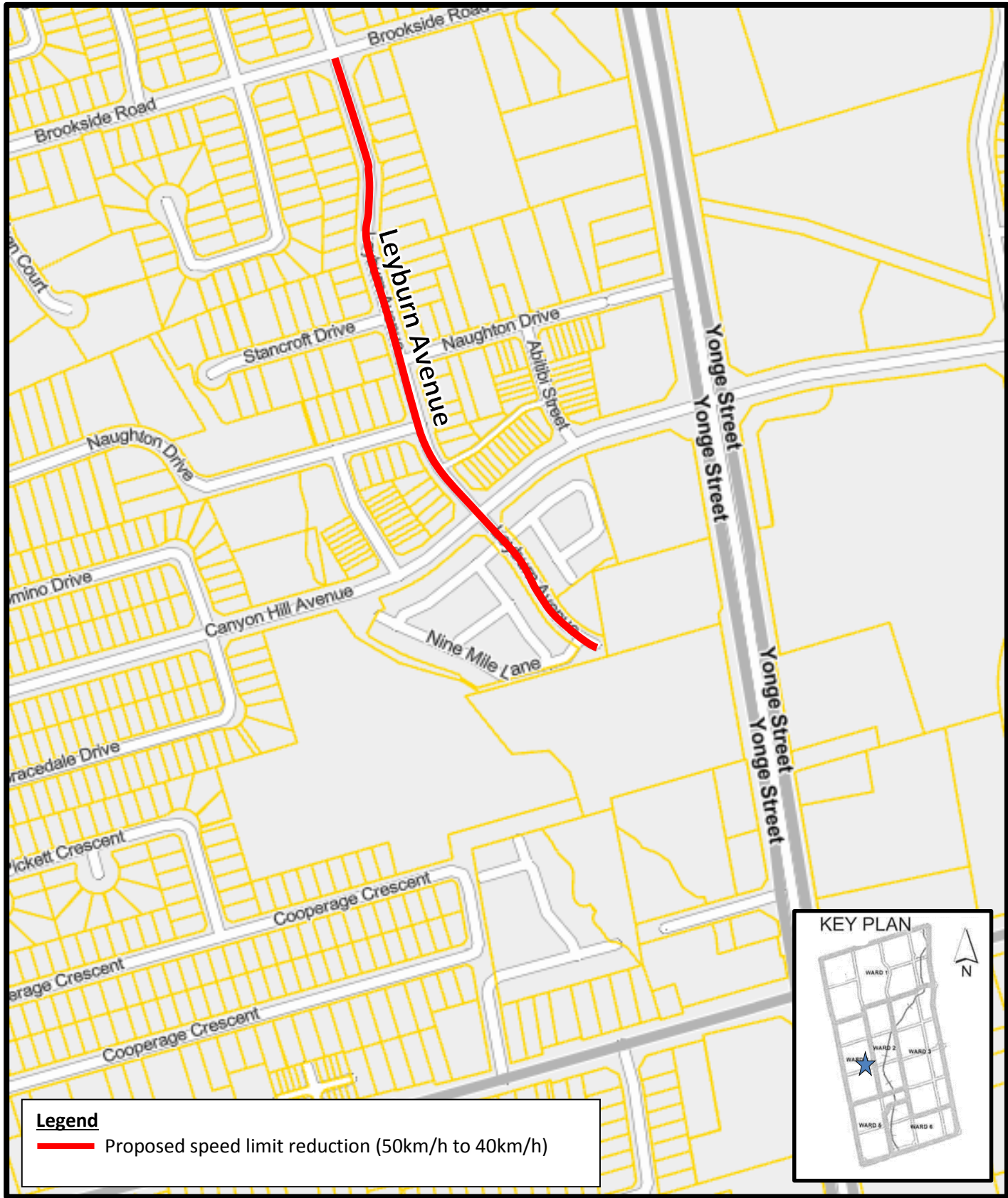


Legend
— Proposed speed limit reduction (50km/h to 40km/h)



Disclaimer
 This information is provided as a public resource of general information by the City of Richmond Hill. The information is provided for convenience only, and the City of Richmond Hill disclaims any responsibility for content, accuracy, currency or completeness. This is not a plan of survey.

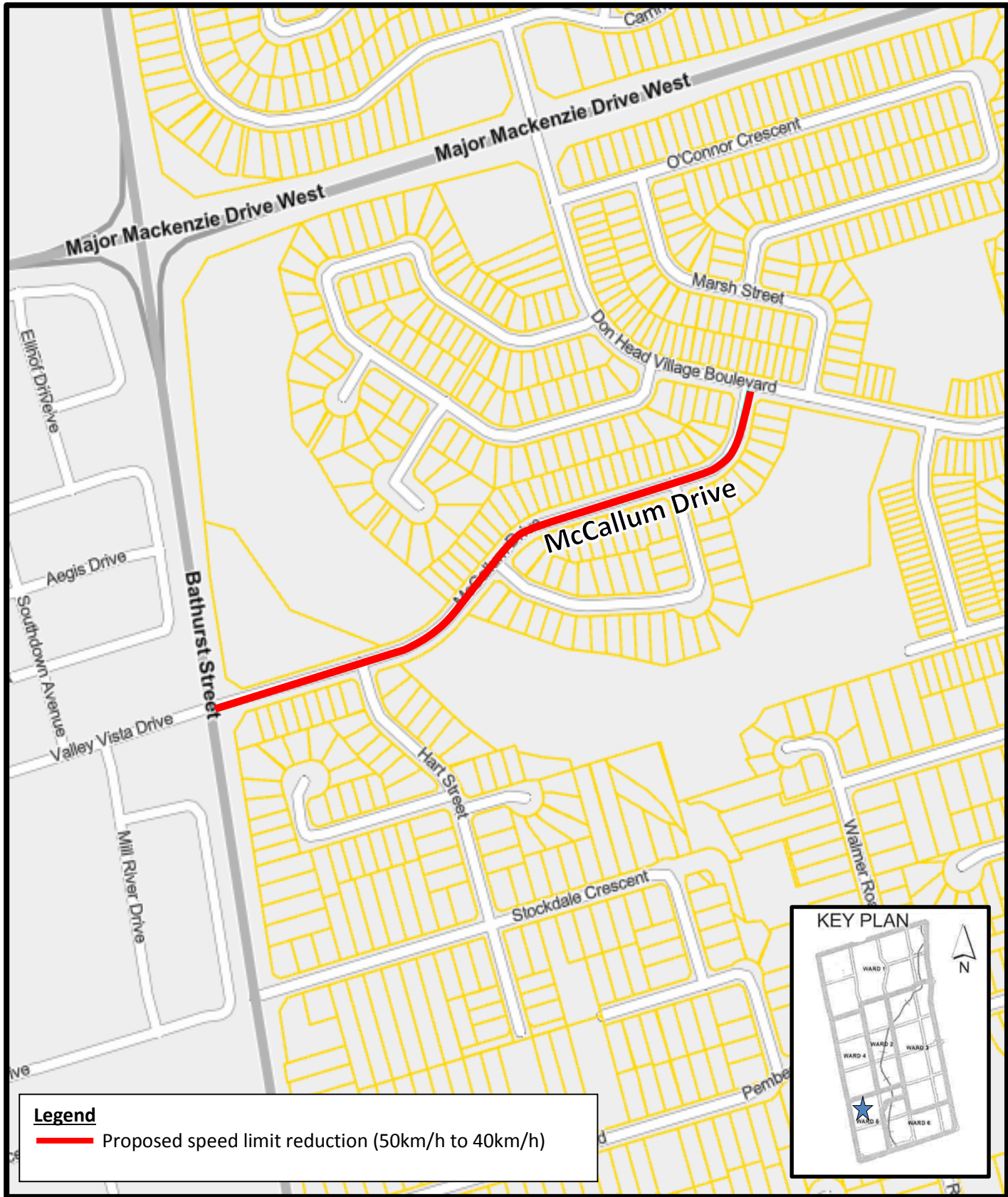
**SRIES.24.009 – Attachment 1 – Location Map
Proposed Speed Limit Modifications
Leyburn Avenue**



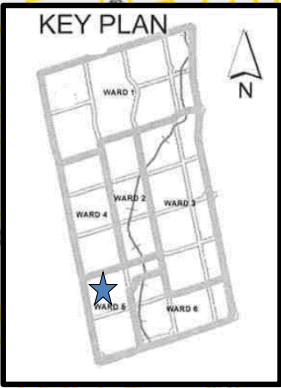
Legend
— Proposed speed limit reduction (50km/h to 40km/h)

Disclaimer
This information is provided as a public resource of general information by the City of Richmond Hill. The information is provided for convenience only, and the City of Richmond Hill disclaims any responsibility for content, accuracy, currency or completeness. This is not a plan of survey.

**SRIES.24.009 – Attachment 1 – Location Map
Proposed Speed Limit Modifications
McCallum Drive**



Legend
— Proposed speed limit reduction (50km/h to 40km/h)



Disclaimer
This information is provided as a public resource of general information by the City of Richmond Hill. The information is provided for convenience only, and the City of Richmond Hill disclaims any responsibility for content, accuracy, currency or completeness. This is not a plan of survey.

**SRIES.24.009 – Attachment 1 – Location Map
Proposed Speed Limit Modifications
Okanagan Drive**



Legend
— Proposed speed limit reduction (50km/h to 40km/h)

Disclaimer
This information is provided as a public resource of general information by the City of Richmond Hill. The information is provided for convenience only, and the City of Richmond Hill disclaims any responsibility for content, accuracy, currency or completeness. This is not a plan of survey.

**SRIES.24.009 – Attachment 1 – Location Map
Proposed Speed Limit Modifications
Selwyn Road**

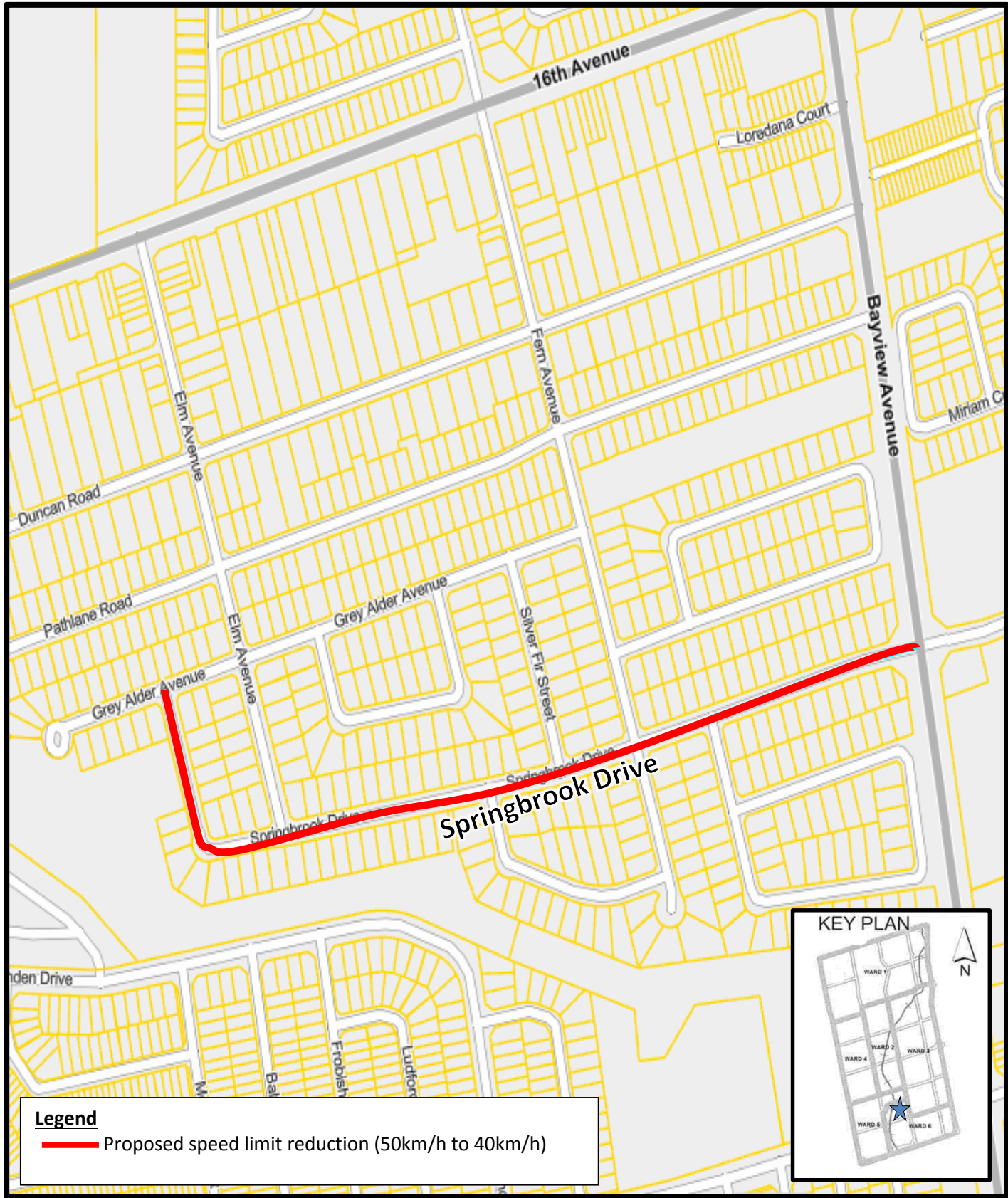


Disclaimer

This information is provided as a public resource of general information by the City of Richmond Hill. The information is provided for convenience only, and the City of Richmond Hill disclaims any responsibility for content, accuracy, currency or completeness. This is not a plan of survey.



**SRIES.24.009 – Attachment 1 – Location Map
Proposed Speed Limit Modifications
Springbrook Drive**

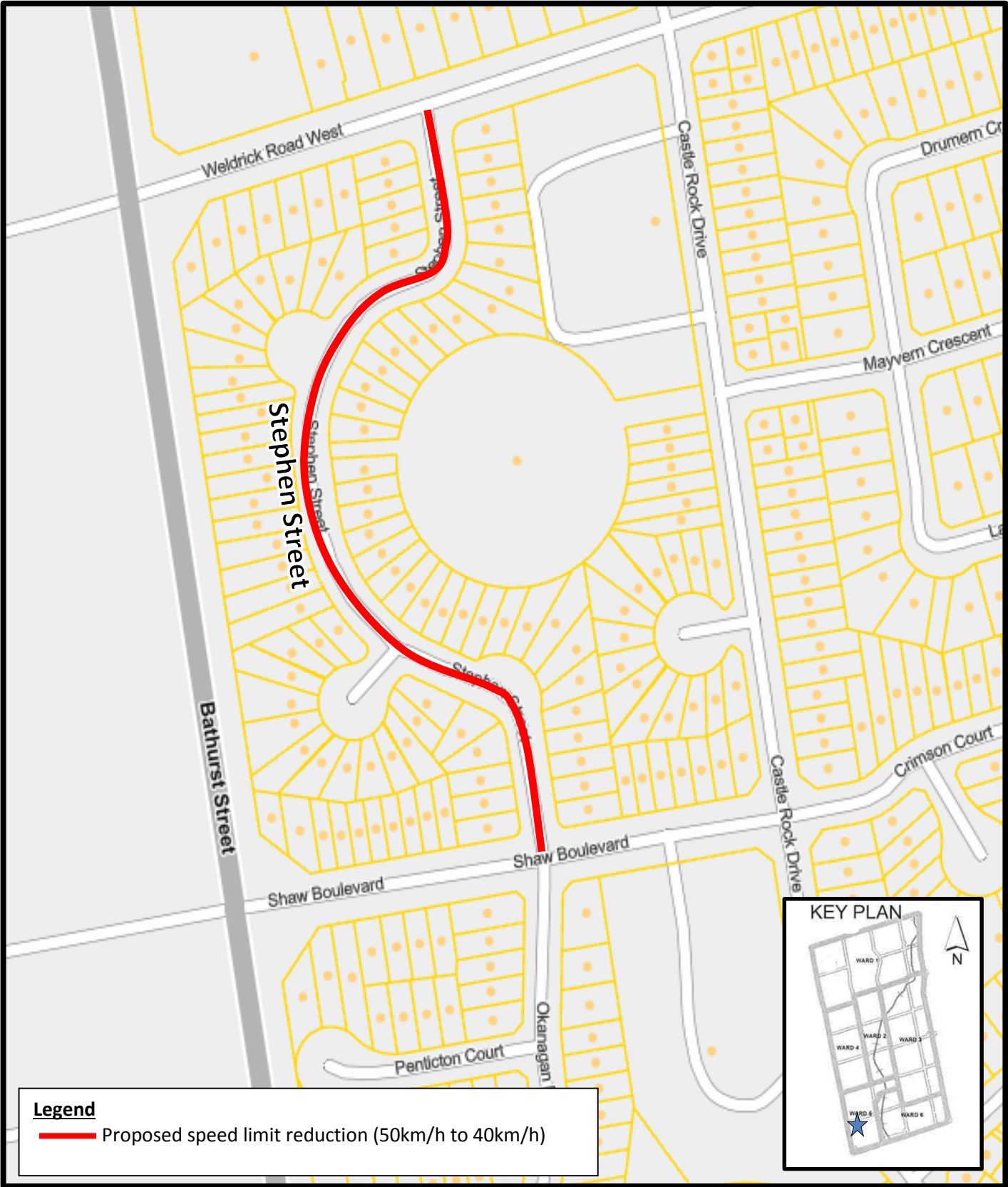


Legend
— Proposed speed limit reduction (50km/h to 40km/h)

Disclaimer
This information is provided as a public resource of general information by the City of Richmond Hill. The information is provided for convenience only, and the City of Richmond Hill disclaims any responsibility for content, accuracy, currency or completeness. This is not a plan of survey.



**SRIES.24.009 – Attachment 1 – Location Map
Proposed Speed Limit Modifications
Stephen Street**

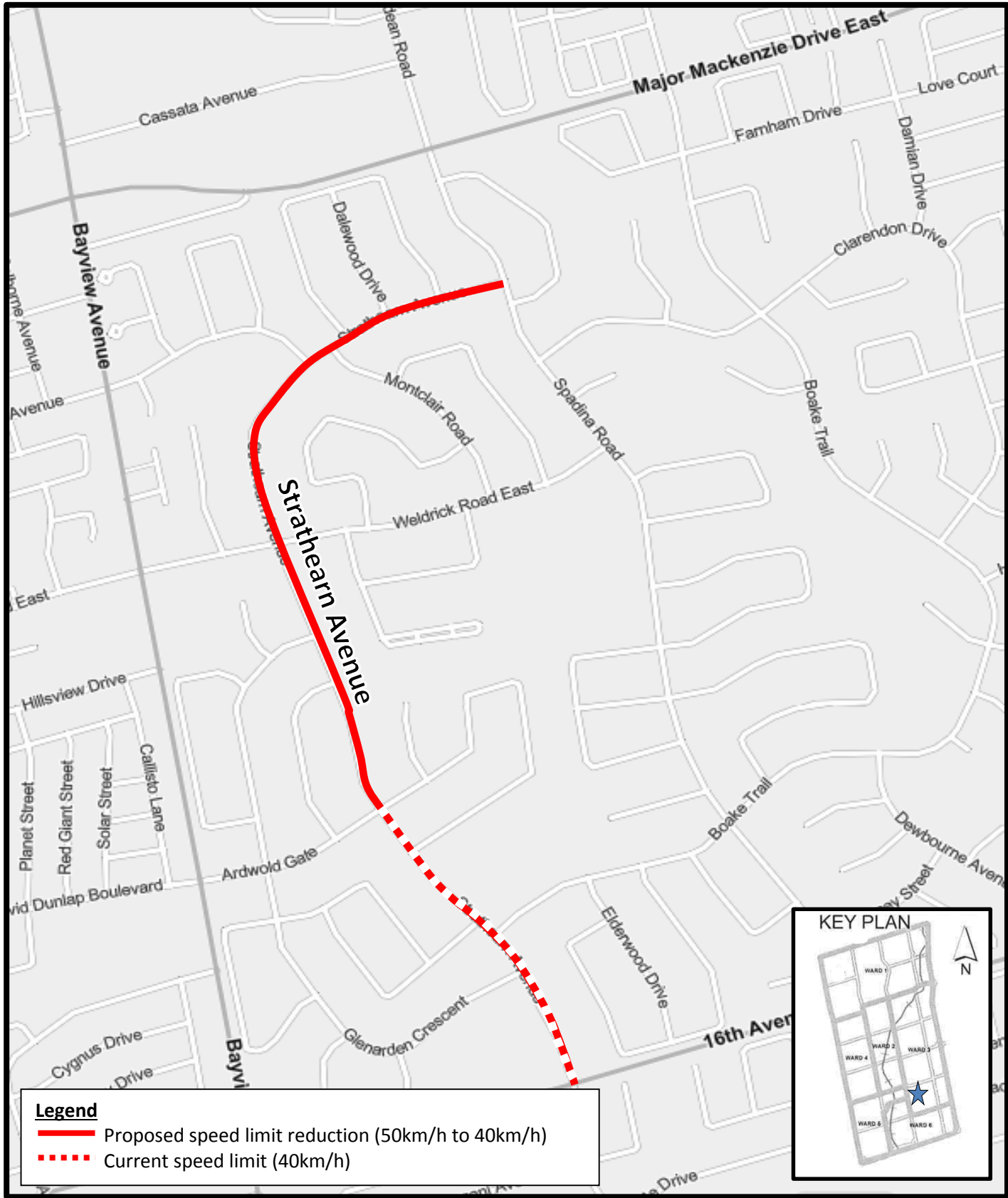


Legend
— Proposed speed limit reduction (50km/h to 40km/h)

Disclaimer
This information is provided as a public resource of general information by the City of Richmond Hill. The information is provided for convenience only, and the City of Richmond Hill disclaims any responsibility for content, accuracy, currency or completeness. This is not a plan of survey.

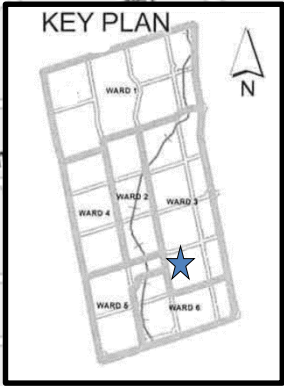


**SRIES.24.009 – Attachment 1 – Location Map
Proposed Speed Limit Modifications
Strathearn Avenue**



Legend

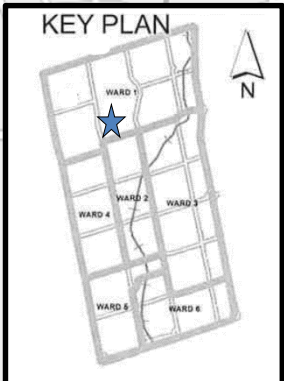
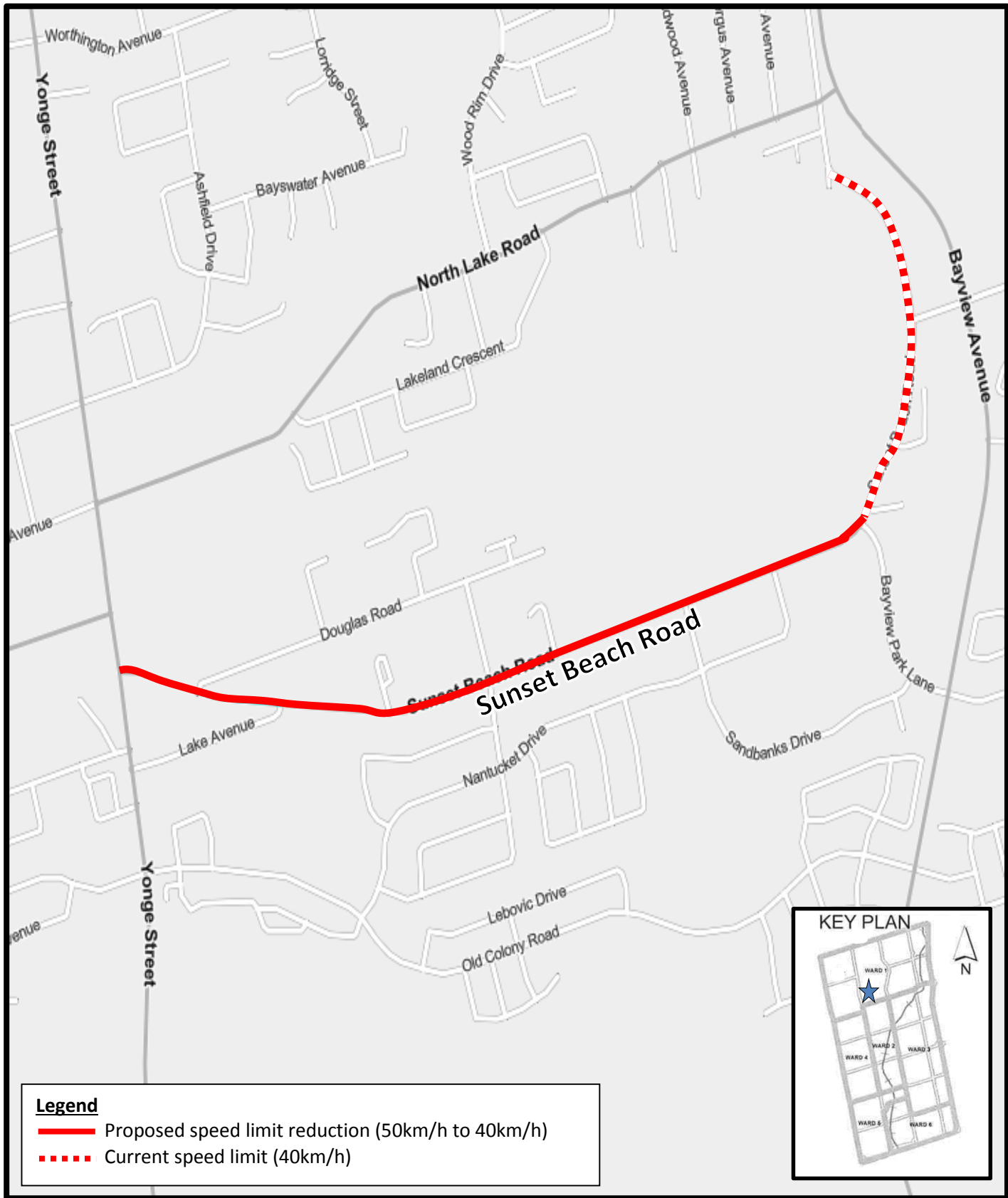
- Proposed speed limit reduction (50km/h to 40km/h)
- - - Current speed limit (40km/h)



Disclaimer
This information is provided as a public resource of general information by the City of Richmond Hill. The information is provided for convenience only, and the City of Richmond Hill disclaims any responsibility for content, accuracy, currency or completeness. This is not a plan of survey.



**SRIES.24.009 – Attachment 1 – Location Map
Proposed Speed Limit Modifications
Sunset Beach Road**

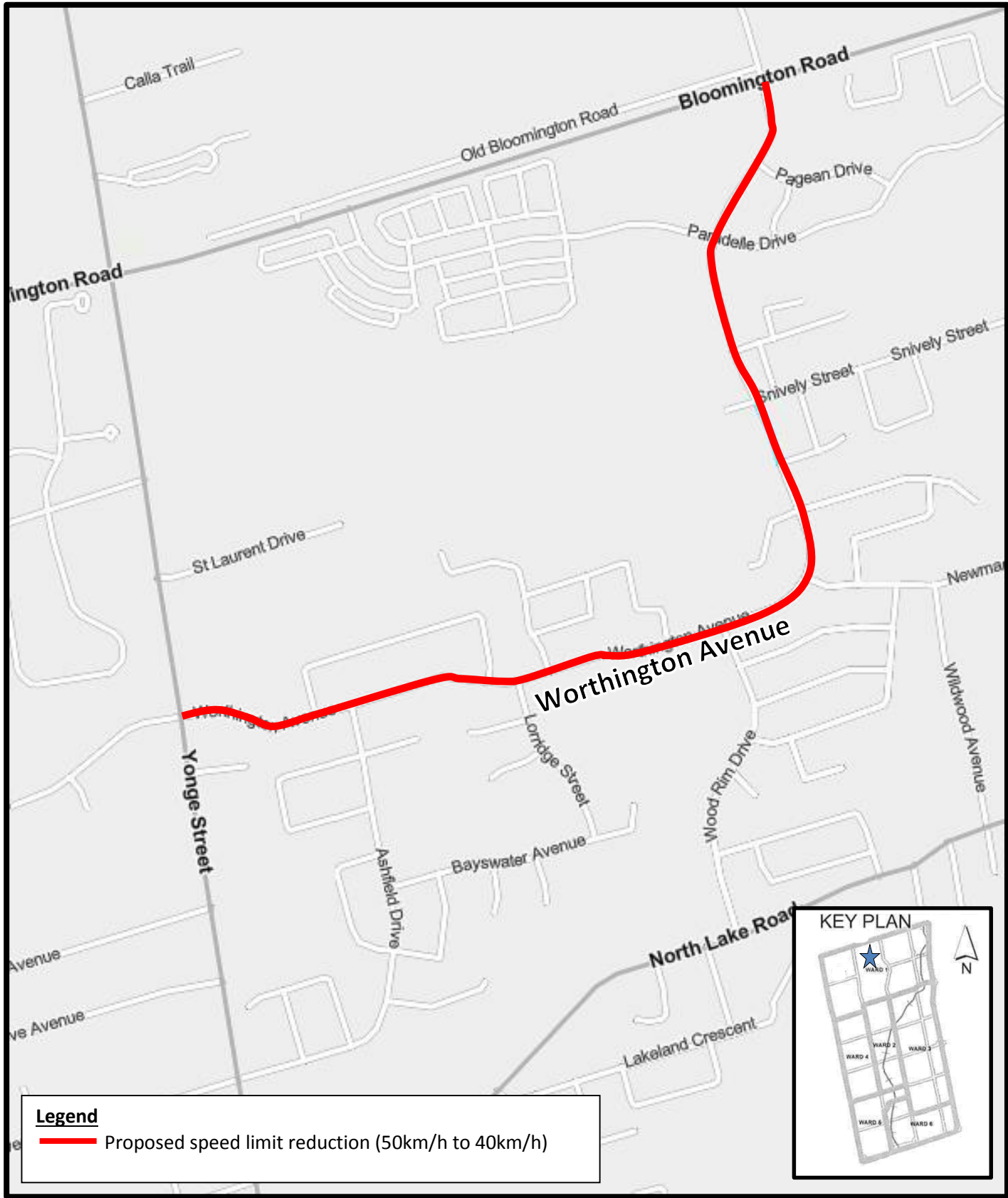


- Legend**
- Proposed speed limit reduction (50km/h to 40km/h)
 - - - - Current speed limit (40km/h)

Disclaimer
This information is provided as a public resource of general information by the City of Richmond Hill. The information is provided for convenience only, and the City of Richmond Hill disclaims any responsibility for content, accuracy, currency or completeness. This is not a plan of survey.



**SRIES.24.009 – Attachment 1 – Location Map
Proposed Speed Limit Modifications
Worthington Avenue**



Legend
— Proposed speed limit reduction (50km/h to 40km/h)

Disclaimer
This information is provided as a public resource of general information by the City of Richmond Hill. The information is provided for convenience only, and the City of Richmond Hill disclaims any responsibility for content, accuracy, currency or completeness. This is not a plan of survey.